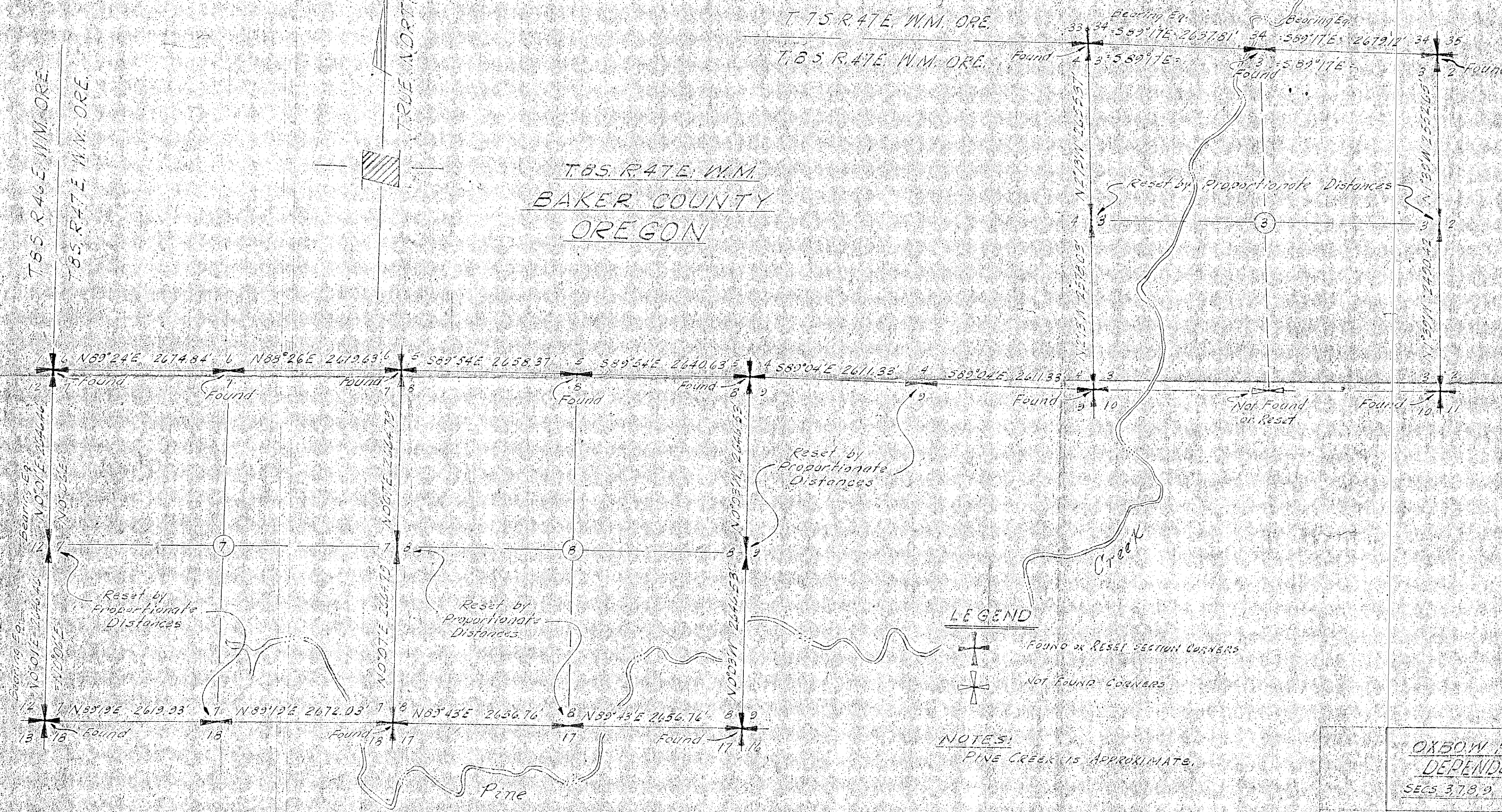




T. 85. R. 47E. W.M.
BAKER COUNTY
OREGON



LEGEND
 FOUND or RESET SECTION CORNERS
 NOT FOUND CORNERS

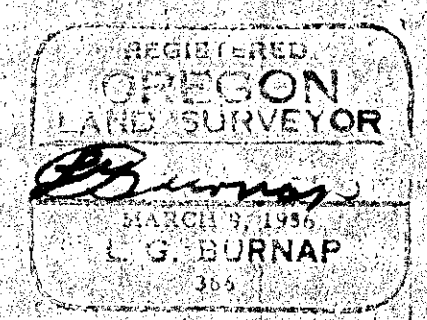
NOTES:
PINE CREEK IS APPROXIMATE.

OXBOW H.E. DEVELOPMENT
DEPENDENT RESURVEY OF
SECS. 7, 8, 9, T. 85. R. 47E. W.M. ORE.

IDAHO POWER CO.
BOISE, IDAHO

SCALE: 1" = 1000' SEPT. 6, 1957

FILED Jan. 10, 1972
BAKER COUNTY SURVEYOR
SURVEY NO. 8:47-1



DE. NO.			
158			
341			
			20R126125 167