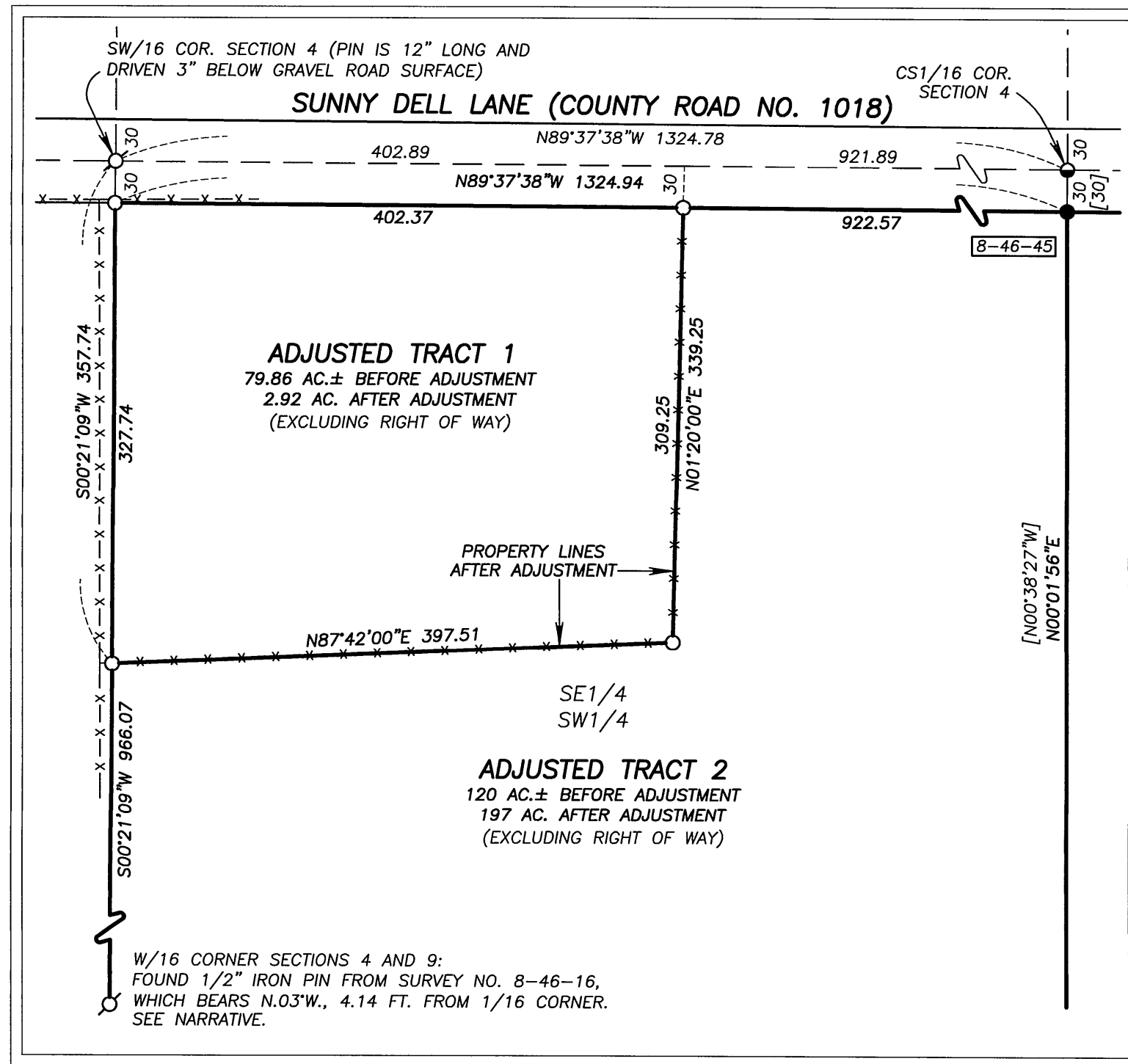


DETAIL

SCALE: 1"=100'



NARRATIVE

THIS SURVEY WAS PERFORMED AT THE REQUEST OF DEVEN AND CATHY THOMPSON. THE PURPOSE OF THIS SURVEY WAS TO MONUMENT A PROPOSED PROPERTY LINE ADJUSTMENT BETWEEN PROPERTIES OWNED BY THE THOMPSONS AS EVIDENCED BY BAKER COUNTY DEED NO.'S B15410015 AND B17050280. THIS LAND USE ACTION WAS APPROVED BY THE BAKER COUNTY PLANNING DEPARTMENT ACCORDING TO THE STAFF REPORT (FILE #PLA-19-126).

THIS PROPERTY LINE ADJUSTMENT REQUIRED THE SUBDIVISION OF SECTION 4 TO DETERMINE THE LINES AND CORNERS OF THE SW1/4 OF THE SECTION. A SEARCH WAS MADE OF THE AVAILABLE RECORDS PERTAINING TO THIS SURVEY. FIELD MEASUREMENTS WERE MADE TO LOCATE MONUMENTS FROM SURVEY NO.'S 8-46-5, 8-46-16, 8-46-41, 8-46-45, 8-46-104 AND LAND PARTITION PLAT NO. P2017-003. THIS ALSO INCLUDED AN ORIGINAL G.L.O. MONUMENT AT THE EAST QUARTER CORNER OF SECTION 4, WHICH HAS BEEN RECOVERED AND UTILIZED IN SURVEY NO.'S 8-46-41 AND 8-46-45, AND LAND PARTITION NO. P2017-003.

AT THE WEST 1/16 CORNER BETWEEN SECTIONS 4 AND 9, I FOUND THE 1/2" PIN FROM SURVEY NO. 8-46-16 OUT OF POSITION. THE PIN BEARS N.03°W., 4.14 FEET FROM THE 1/16 CORNER POSITION DETERMINED ON LINE AND MIDWAY BETWEEN FOUND ACCEPTED MONUMENTS AT THE SW CORNER AND SOUTH QUARTER CORNER OF SECTION 4. I FOUND NO EVIDENCE IN THE FIELD TO SUGGEST THAT THERE HAS BEEN ANY LANDOWNER RELIANCE ON THE POSITION OF THE 1/2" PIN. I DO NOT ACCEPT THE FOUND PIN FOR THE POSITION OF THE 1/16 CORNER, AND ESTABLISHED A NEW MONUMENT ACCORDINGLY. ALL OTHER MONUMENTS WERE FOUND IN PLACE AND ACCEPTED.

I SUBDIVIDED SECTION 4 WITH REFERENCE TO THE 2009 B.L.M. MANUAL OF SURVEYING INSTRUCTIONS. NEW MONUMENTS WERE SET AT LOCATIONS ACCORDING TO THE EVIDENCE FOUND. AT THE DIRECTION OF THE THOMPSONS, THE ADJUSTED PROPERTY LINES WERE LOCATED ALONG A NEWLY-CONSTRUCTED FENCE.

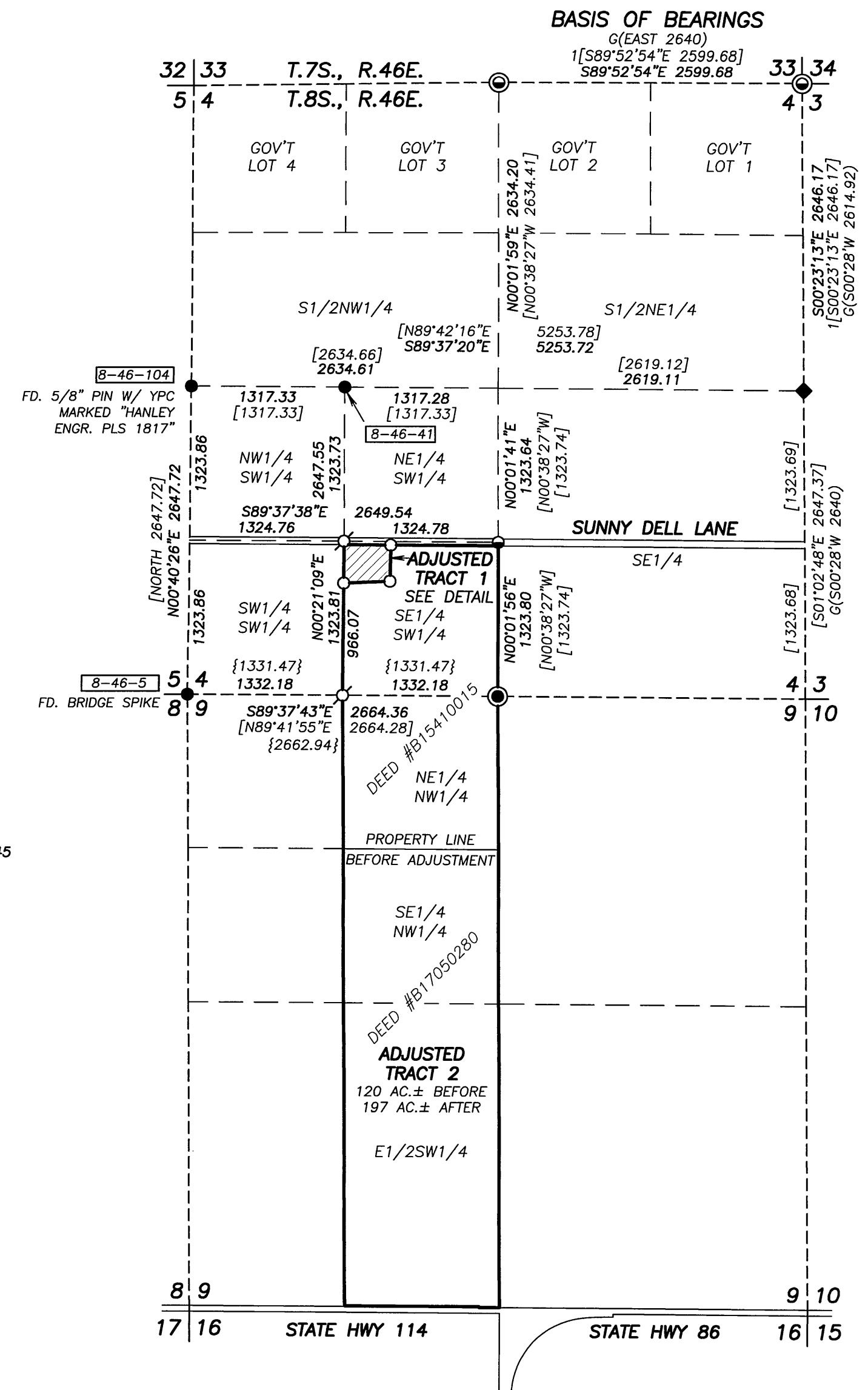
SEE MONUMENTATION SHEETS FILED SEPARATELY FOR DETAILS REGARDING THE MONUMENTS AND ACCESSORIES SET AT THE SW1/16 AND W1/16 CORNERS.

REFERENCES

- RECORD MAP OF SURVEY NO.'S 8-46-5, 8-46-16, 8-46-41, 8-46-45 AND 8-46-104
- GENERAL LAND OFFICE FIELD NOTES
- DEED RECORD INSTRUMENT NO.'S B15410015 AND B17050280
- LAND PARTITION PLAT NO. P2017-003
- BAKER COUNTY PLANNING DEPARTMENT STAFF REPORT (FILE# PLA-19-126)

OVERVIEW

SCALE: 1"=1000'



BASIS OF BEARINGS

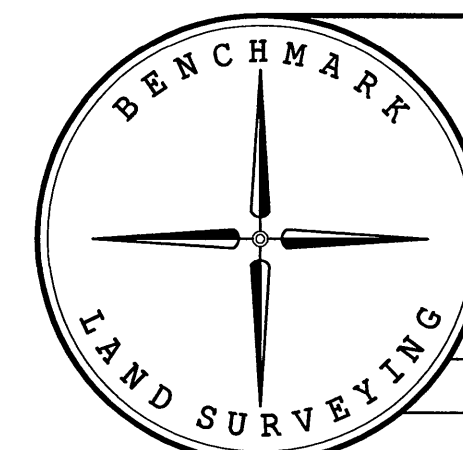
LAND PARTITION PLAT NO. P2017-003 AS SHOWN

LEGEND

- ◆ FOUND STONE MARKED 1/4 ON EAST FACE, AS PREVIOUSLY RECOVERED ON SURVEY NO.'S 8-46-41 AND 8-46-45 AND LAND PARTITION PLAT NO. P2017-003.
- FOUND 1/2" GALV. IRON PIPE WITH ATTACHED 2 1/2" BRASS CAP FROM SURVEY NO. 8-46-45
- ⊙ FOUND 5/8" IRON PIN WITH ATTACHED 2 1/2" ALUMINUM CAP FROM LAND PARTITION PLAT NO. P2017-003
- FOUND 5/8" IRON PIN WITH NO CAP FROM SURVEY NO. 8-46-45
- FOUND 5/8" IRON PIN WITH ATTACHED YELLOW PLASTIC CAP MARKED "HANLEY ENGR. PLS 1206" UNLESS OTHERWISE NOTED
- ⊙ SET 5/8" IRON PIN WITH ATTACHED 2" ALUMINUM CAP MARKED "BENCHMARK LAND SURVEYING", AND WITH APPROPRIATE 1/16 CORNER DESIGNATIONS. UNLESS OTHERWISE NOTED, PIN IS 24" LONG. SEE MONUMENTATION SHEETS FILED SEPARATELY FOR MORE DETAILS
- SET 5/8"x24" IRON PIN WITH ATTACHED YELLOW PLASTIC CAP MARKED "BENCHMARK SURVEYING"
- G() GLO RECORD BEARING AND DISTANCE
- { } RECORD BEARING AND DISTANCE FROM SURVEY NO. 8-46-16
- [] RECORD BEARING AND DISTANCE FROM SURVEY NO.'S 8-46-41 AND 8-46-45
- 1[] RECORD BEARING AND DISTANCE FROM LAND PARTITION NO. P2017-003
- x-x FENCE LINE
- [8-46-XX] SURVEY NUMBER FROM WHICH FOUND MONUMENT ORIGINATED



FILED September 4, 2019
BAKER COUNTY SURVEYOR
SURVEY NO. 8-46-162



BENCHMARK LAND SURVEYING
217 N. CANYON BLVD. JOHN DAY, OREGON
1207 DEWEY AVE., BAKER CITY, OREGON
541-575-1251 ~ 541-523-5852

MAP OF SURVEY
PROPOSED PROPERTY LINE ADJUSTMENT
SITUATED IN THE SW1/4 SECTION 4, T.8S., R.46E., W.M.,
BAKER COUNTY, OREGON

| | | |
|-----------------|--------------------------|-----------|
| SURVEYED FOR | DEVEN AND CATHY THOMPSON | |
| SURVEYED BY | JLH | 8/27/2019 |
| SCALE: AS SHOWN | DRAWN BY: JLH | |