

NOTE:
CALCULATED POINT FOR CORNER "B" FALLS
AT THE BASE OF A FENCE CORNER, FROM
WHICH A 3/4" IRON PIPE OF UNKNOWN
ORIGIN BEARS N39°44'14"W 1.49 FT.

BASIS OF BEARINGS

[S89°51'47"W 2637.60]
2(S89°51'50"W 2637.60)
1(S89°51'50"W 2637.60)
S89°51'50"W 2637.60

S59°12'00"W 1017.24
{S59°25'W 1019.12}
PHA(S59°25'W 1019.12)

LEGEND

- FOUND 2 1/2" BRASS DISC SET BELOW THE PAVED ROAD SURFACE FROM SURVEY NO. 8-46-20
- ⊙ FOUND 2 1/2" BRASS DISC SET BELOW THE PAVED ROAD SURFACE ESTABLISHED BY IDAHO POWER COMPANY, AS SHOWN ON SURVEY NO. 8-46-20
- FOUND A COPPER PLATED 1/2" STEEL PIN FROM 1956 SURVEY BY PHILO ANDERSON, P.E.
- FOUND 3/4" IRON PIPE BELIEVED TO HAVE BEEN SET DURING SURVEY NO. 8-46-73
- ▲ FOUND ODOT NETWORK POINT #5: A 5/8" IRON PIN WITH ATTACHED 1 1/2" ALUMINUM CAP SET IN SURVEY NO. 8-46-77 AND UTILIZED IN SURVEY NO'S 8-46-79 THROUGH 8-46-89
- SET 5/8"x30" IRON PIN WITH ATTACHED YELLOW PLASTIC CAP MARKED BENCHMARK SURVEYING
- () DEED RECORD BEARING AND DISTANCE
- 1() RECORD BEARING AND DISTANCE FROM SURVEY NO. 8-46-20
- 2() RECORD BEARING AND DISTANCE FROM SURVEY NO. 8-46-77
- PHA() RECORD BEARING AND DISTANCE FROM MAP DATED JULY 26, 1958 BY PHILO ANDERSON
- { } RECORD BEARING AND DISTANCE FROM DEEDS AND FROM SURVEY NO. 8-46-73
- [] RECORD BEARING AND DISTANCE FROM (OR CALCULATED FROM) SURVEY NO. 8-46-79 THROUGH 8-46-89
- x-x WIRE FENCE LINE
- WOODEN FENCE LINE
- ┌ BUILDING CORNER
- ⊠ O.D.O.T. POINT # FROM SURVEY NO.'S 8-46-77 AND 8-46-79 THROUGH 8-46-89 SEE TABLE FOR COORDINATES
- Ⓐ CORNER DESIGNATION - SEE NARRATIVE



BASIS OF BEARINGS

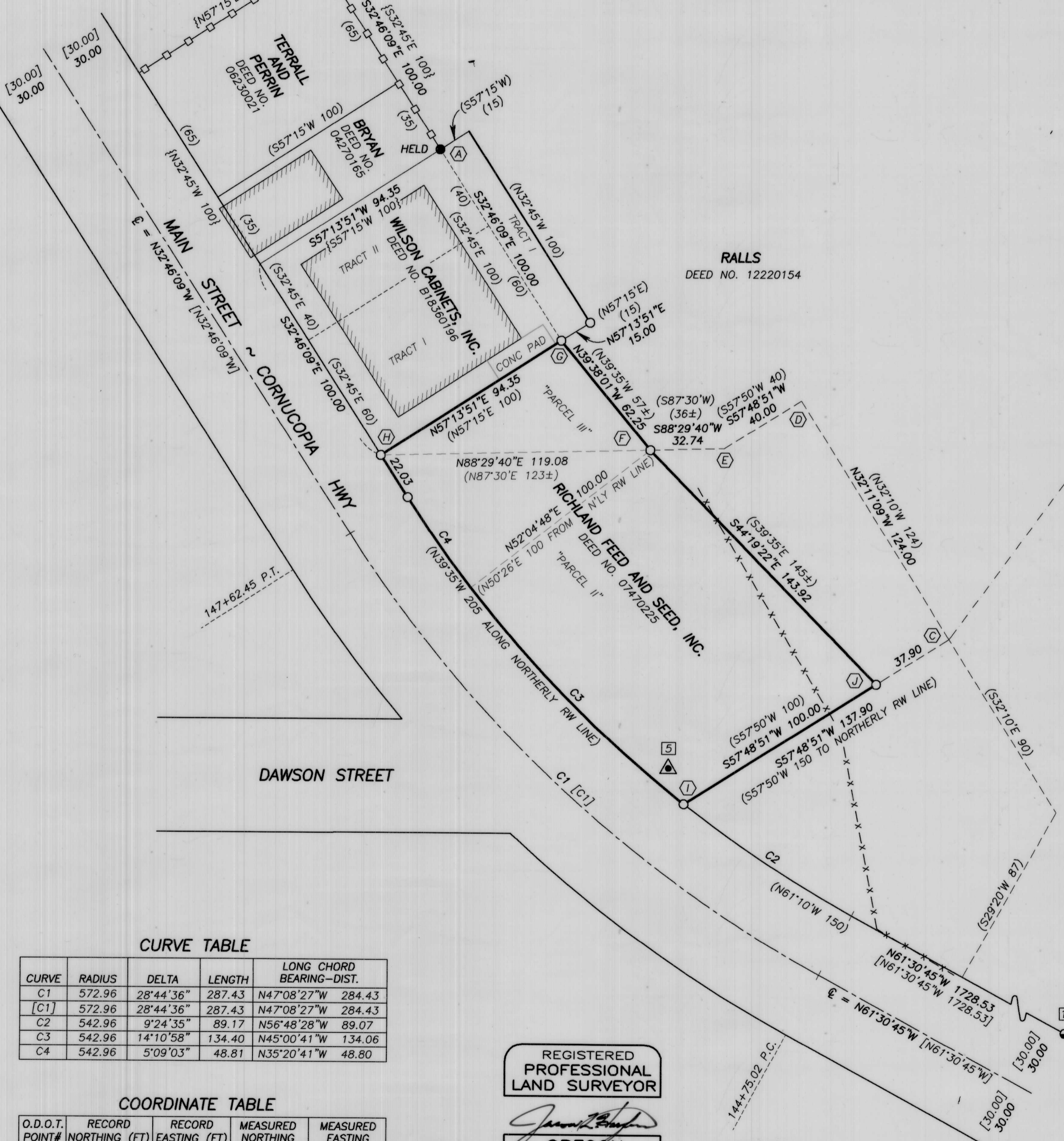
SURVEY NO. 8-46-20
THE NORTH LINE OF THE NE 1/4 SECTION 17,
T.8S., R.46E. BEARS S.89°51'50"W. AS SHOWN

NARRATIVE

NARRATIVE IS A SEPARATE DOCUMENT,
ATTACHED HERETO AND BY THIS REFERENCE
MADE A PART HEREOF

REFERENCES

- RECORD MAP OF SURVEY NO.'S 8-46-20, 8-46-73, 8-46-77, 8-46-79 THROUGH 8-46-89
- DEED RECORD INSTRUMENT NO.'S 04270165, 06230021, 07470225, 12220154 AND B18360196
- UNRECORDED SURVEY BY PHILO ANDERSON DATED MAY 17, 1956
- UNRECORDED SURVEY BY PHILO ANDERSON DATED JULY 26, 1958



CURVE TABLE

| CURVE | RADIUS | DELTA | LENGTH | LONG CHORD BEARING-DIST. |
|-------|--------|-----------|--------|--------------------------|
| C1 | 572.96 | 28°44'36" | 287.43 | N47°08'27"W 284.43 |
| [C1] | 572.96 | 28°44'36" | 287.43 | N47°08'27"W 284.43 |
| C2 | 542.96 | 9°24'35" | 89.17 | N56°48'28"W 89.07 |
| C3 | 542.96 | 14°10'58" | 134.40 | N45°00'41"W 134.06 |
| C4 | 542.96 | 5°09'03" | 48.81 | N35°20'41"W 48.80 |

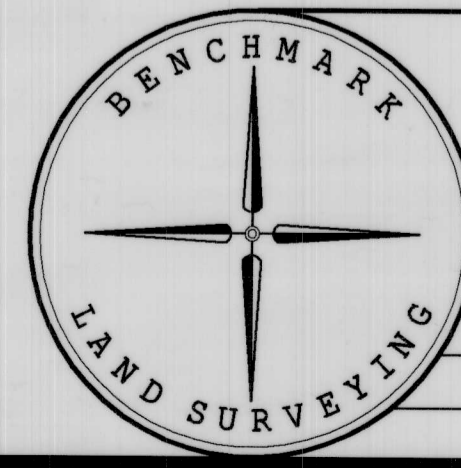
COORDINATE TABLE

| O.D.O.T. POINT# | RECORD NORTHING (FT) | RECORD EASTING (FT) | MEASURED NORTHING | MEASURED EASTING |
|-----------------|----------------------|---------------------|-------------------|------------------|
| 2 | 656171.69 | 8795293.14 | 656171.73 | 8795293.14 |
| 5 | 655300.37 | 8797214.01 | 655300.37 | 8797214.01 |
| 7 | 656178.00 | 8797930.77 | 656178.00 | 8797930.77 |
| 1042 | 654411.52 | 8798814.71 | 654411.52 | 8798814.71 |

REGISTERED PROFESSIONAL LAND SURVEYOR

Jason L. Hatfield
OREGON
NOVEMBER 30, 2007
JASON L. HATFIELD
#69454

EXPIRES: 6/30/2019



BENCHMARK LAND SURVEYING
217 N. CANYON BLVD. JOHN DAY, OREGON
1207 DEWEY AVE. BAKER CITY, OREGON
541-575-1251 ~ 541-523-5852

| MAP OF SURVEY | | |
|---|------------------------------|-----------|
| LAND SITUATED IN THE NE 1/4 NE 1/4 SECTION 17, T.8S., R.46E., W.M., CITY OF HALFWAY, BAKER COUNTY, OREGON | | |
| SURVEYED FOR | RICHLAND FEED AND SEED, INC. | |
| SURVEYED BY | JLH & MRT | 12/5/2018 |
| SCALE: 1"=40' | DRAWN BY: JLH | |

FILED December 26, 2018
BAKER COUNTY SURVEYOR
SURVEY NO. 8-46-158