

PUBLIC LAND SURVEY CORNER RECORD
MALHEUR COUNTY, OREGON

Township 8 S, Range 46 E, Section 23, Corner SE

CORNER EVIDENCE FOUND (INCLUDING ACCESSORIES): _____

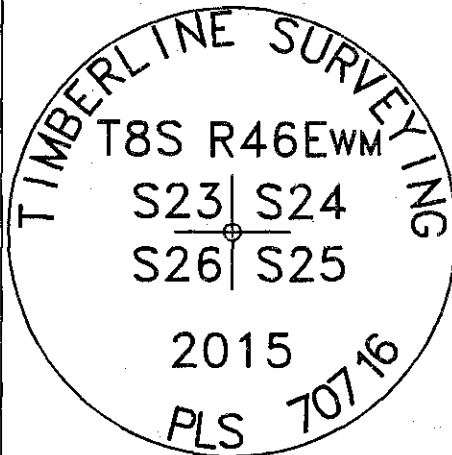
CORNER LOCATION DETERMINED USING A PARTITION PLAT DONE BY HANLEY ENGINEERING IN 1993 SURVEY

NO. 8-46-51. FOUND ORIGINAL STONE 13"x11"x7" WITH 2 GROOVES ON ONE EDGE AND 1 GROOVE ON THE ANOTHER
EDGE LYING IN A DEPRESSION.

Description of New Monument, Accessories, or Changes: _____

SET ALUMINUM CAP WITH FENO MONUMENT. MONUMENT SET FLUSH WITH THE
GROUND AND MARKED AS SHOWN.

Monument Detail



ALUMINUM CAP

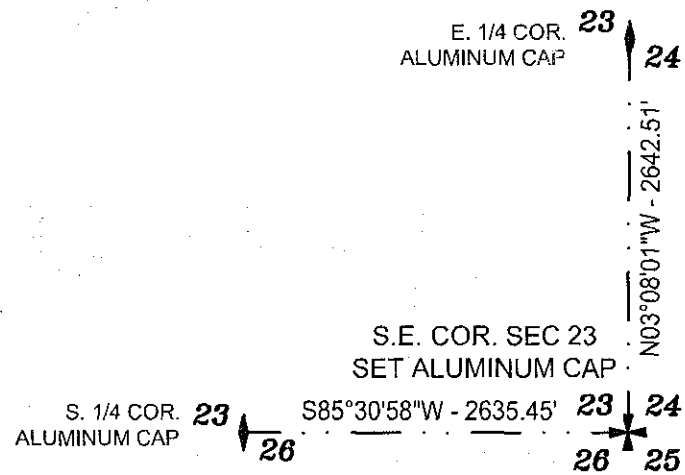
Stamp



OREGON
NOVEMBER 13, 2007
RUSSELL BADGLEY
70716 LS

Exp. 12/31/15

Sketch of General Area and Accessories



Bus. Name and Address

TIMBERLINE SURVEYING

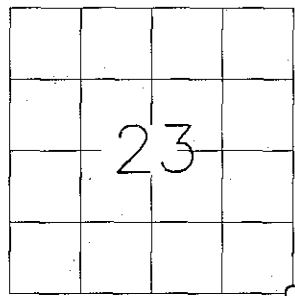
847 PARCKCENTRE WAY STE. 3

NAMPA, IDAHO 83651

Date of Field Work:

JUNE 30, 2015

Diagram



For County Use Only

Received _____

Filed _____

Sur. No. _____

Dwg. No. _____

Index. No. R-21

FILED July 17 2015

BAKER COUNTY SURVEYOR

SURVEY NO. 8-46-134