

PUBLIC LAND SURVEY CORNER RECORD
MALHEUR COUNTY, OREGON

Township 8 S, Range 46 E, Section 22, Corner E 1/4

CORNER EVIDENCE FOUND (INCLUDING ACCESSORIES): NO CORNER EVIDENCE FOUND.

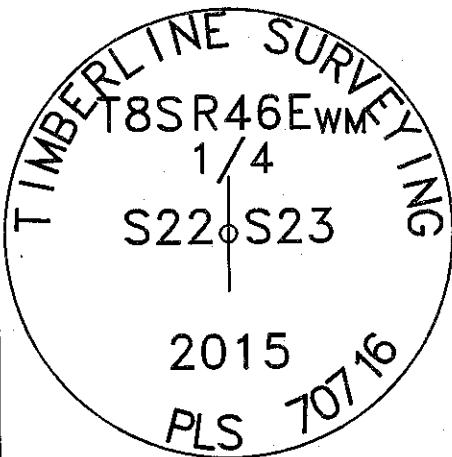
CORNER LOCATION DETERMINED USING A PARTITION PLAT DONE BY HANLEY ENGINEERING IN 1993 SURVEY

NO. 8-46-51.

Description of New Monument, Accessories, or Changes: _____

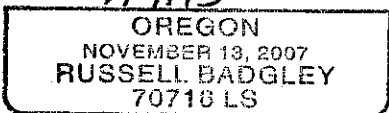
SET ALUMINUM CAP WITH FENO MONUMENT. MONUMENT SET FLUSH WITH THE
GROUND AND MARKED AS SHOWN.

Monument Detail



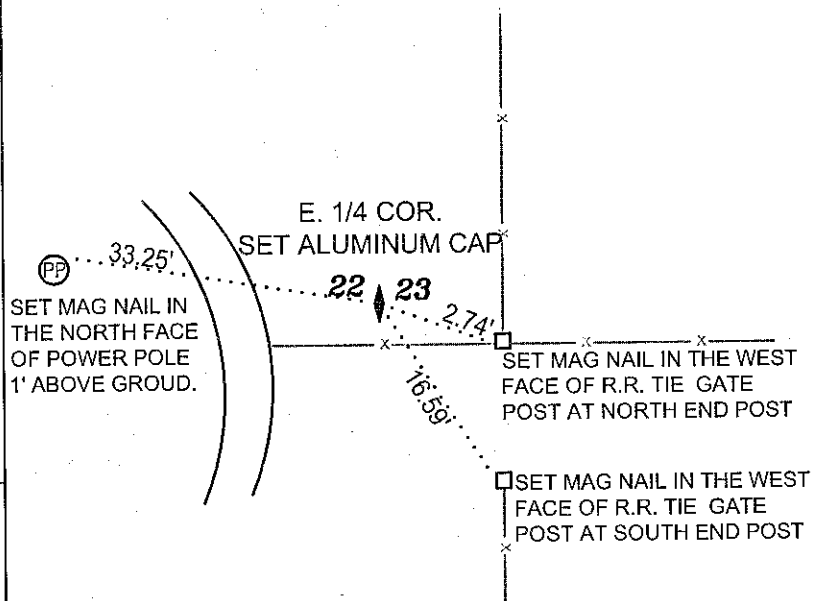
ALUMINUM CAP

Stamp



Exp. 12/31/15

Sketch of General Area and Accessories



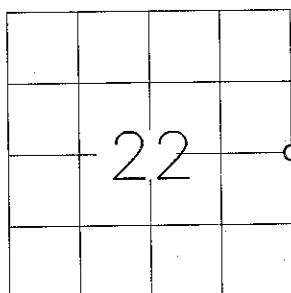
Bus. Name and Address

TIMBERLINE SURVEYING
847 PARCKCENTRE WAY STE. 3
NAMPA, IDAHO 83651

Date of Field Work:

JUNE 30, 2015

Diagram



For County Use Only

Received _____

Filed _____

Sur. No. _____

Dwg. No. _____

Index. No. P17

FILED July 17, 2015

BAKER COUNTY SURVEYOR

SURVEY NO. 8-46-130