

PUBLIC LAND SURVEY CORNER RECORD
MALHEUR COUNTY, OREGON

Township 8 S, Range 46 E, Section 22, Corner C 1/4

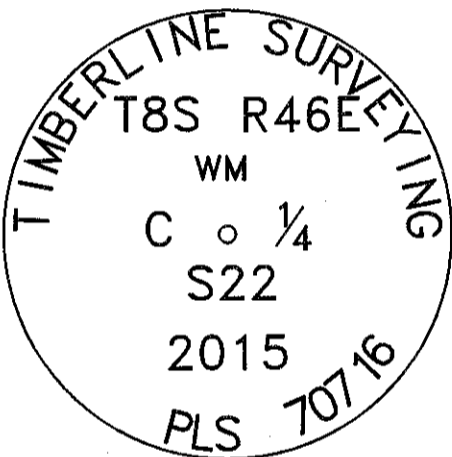
CORNER EVIDENCE FOUND (INCLUDING ACCESSORIES): _____

CORNER LOCATION DETERMINED BY INTERSECTING A LINE DRAWN FROM THE W1/4 CORNER TO THE E1/4 CORNER,
WITH A LINE DRAWN FROM THE NORTH 1/4 CORNER ALONG THE CENTER OF THE ROAD AND ALONG A NORTH/SOUTH
FENCE LINE.

Description of New Monument, Accessories, or Changes: _____

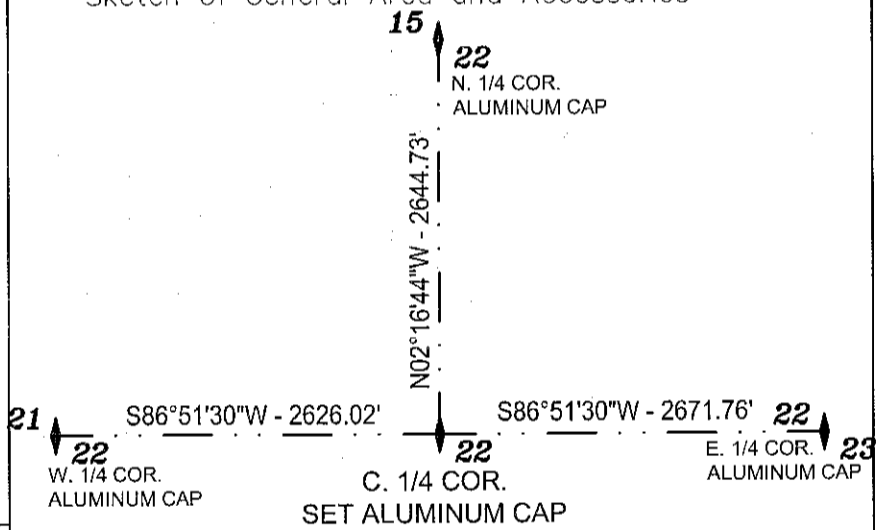
SET ALUMINUM CAP WITH FENO MONUMENT. MONUMENT SET FLUSH WITH THE
GROUND AND MARKED AS SHOWN.

Monument Detail

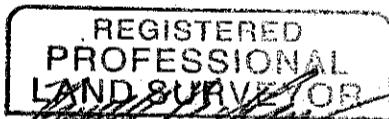


ALUMINUM CAP

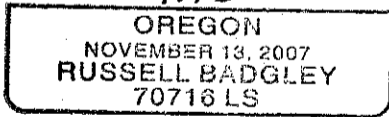
Sketch of General Area and Accessories



Stamp



7/9/15



Exp. 12/31/15

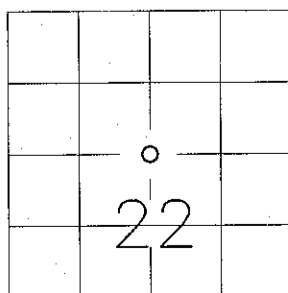
Bus. Name and Address

TIMBERLINE SURVEYING
847 PARCKCENTRE WAY STE. 3
NAMPA, IDAHO 83651

Date of Field Work:

JUNE 30, 2015

Diagram



For County Use Only

Received _____

Filed _____

Sur. No. _____

Dwg. No. _____

Index. No. P-15

FILED July 17, 2015

BAKER COUNTY SURVEYOR

SURVEY NO. 8-46-129