

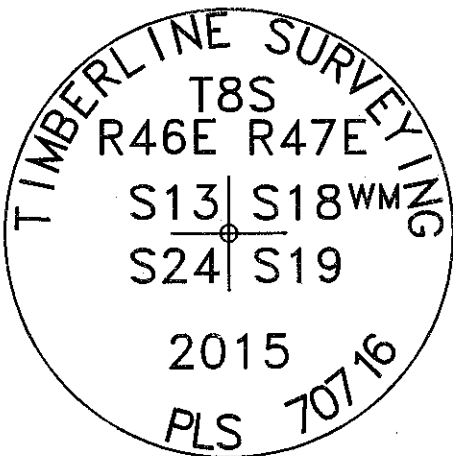
PUBLIC LAND SURVEY CORNER RECORD
MALHEUR COUNTY, OREGON

Township 8 S, Range 46 E, Section 24, Corner NE

CORNER EVIDENCE FOUND (INCLUDING ACCESSORIES): NO CORNER EVIDENCE FOUND.
CORNER LOCATION DETERMINED BY USING THE GLO RECORD DIMENSIONS FOR THE WEST AND NORTH LINE OF
SECTION 24. I SET THE RECORD LINEWORK ON THE NORTHWEST CORNER OF SECTION 24 AS DETERMINE BY RECORD
MAP 8-46-51 AND THEN ROTATING THE WEST LINE TO THE FOUND ORIGINAL STONE FOR THE SW CORNER OF SECTION
24. I THEN HELD THE END OF THE NORTH LINE FOR THE CORNER LOCATION. THIS LOCATION FITS VERY WELL WITH THE
TOPO CALLS IN THE GLO NOTES. I TRIED OTHER WAYS OF CALCULATING THE CORNER LOCATION SUCH AS SINGLE
PROPORTION ETC. NONE OF THE OTHER OPTIONS SEEMED TO FIT THE TOPO CALLS.

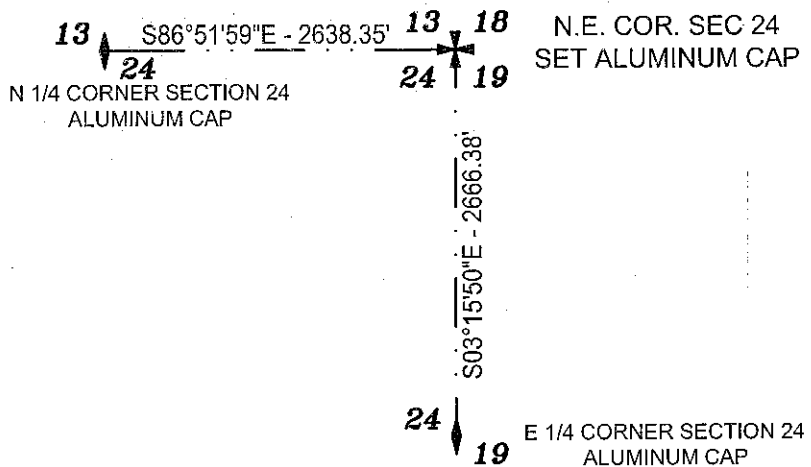
Description of New Monument, Accessories, or Changes: _____
SET ALUMINUM CAP WITH FENO MONUMENT. MONUMENT SET FLUSH WITH THE
GROUND AND MARKED AS SHOWN.

Monument Detail

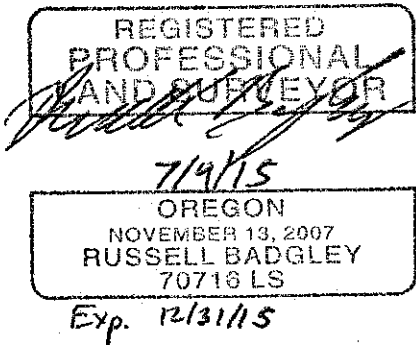


ALUMINUM CAP

Sketch of General Area and Accessories



Stamp



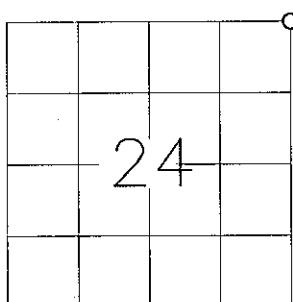
Bus. Name and Address

TIMBERLINE SURVEYING
847 PARCKCENTRE WAY STE. 3
NAMPA, IDAHO 83651

Date of Field Work:

JUNE 30, 2015

Diagram



For County Use Only

Received _____
 Filed _____
 Sur. No. _____
 Dwg. No. _____
 Index. No. N-25

FILED July 17, 2015
 BAKER COUNTY SURVEYOR
 SURVEY NO. 8-46-127/8-47-6