

PUBLIC LAND SURVEY CORNER RECORD  
MALHEUR COUNTY, OREGON

Township 8 S, Range 46 E, Section 23, Corner N.E.

CORNER EVIDENCE FOUND (INCLUDING ACCESSORIES): NO CORNER EVIDENCE FOUND.

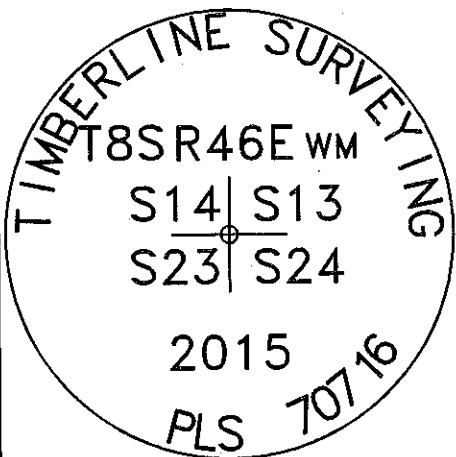
CORNER LOCATION DETERMINED USING A PARTITION PLAT DONE BY HANLEY ENGINEERING IN 1993 SURVEY

NO. 8-46-51.

Description of New Monument, Accessories, or Changes: \_\_\_\_\_

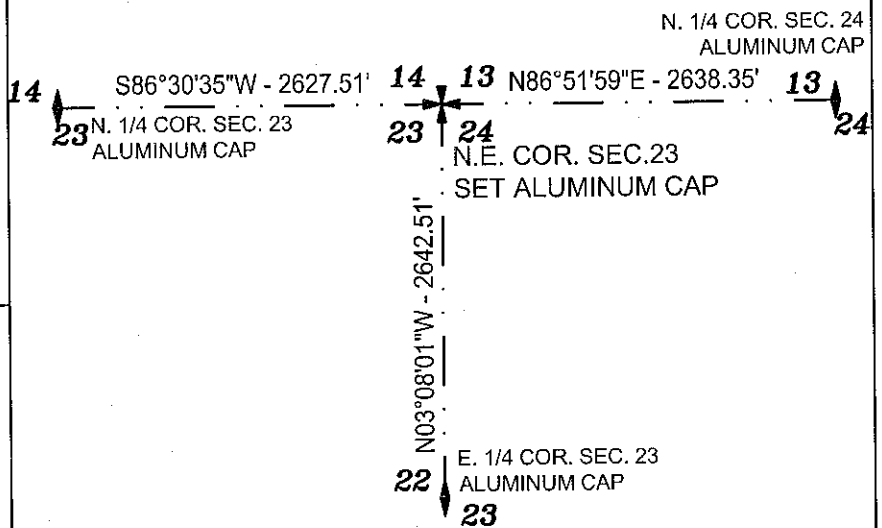
SET ALUMINUM CAP WITH FENO MONUMENT. MONUMENT SET FLUSH WITH THE  
GROUND AND MARKED AS SHOWN.

Monument Detail

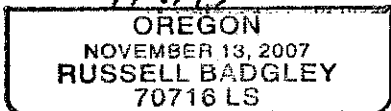
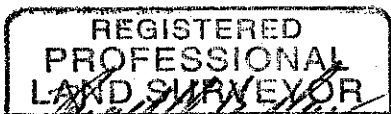


ALUMINUM CAP

Sketch of General Area and Accessories



Stamp



Exp. 12/31/15

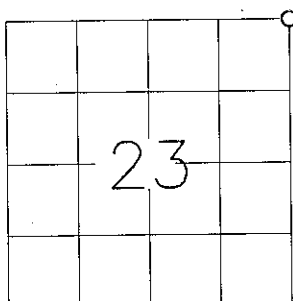
Bus. Name and Address

TIMBERLINE SURVEYING  
847 PARCKCENTRE WAY STE. 3  
NAMPA, IDAHO 83651

Date of Field Work:

JUNE 30, 2015

Diagram



For County Use Only

Received \_\_\_\_\_

Filed \_\_\_\_\_

Sur. No. \_\_\_\_\_

Dwg. No. \_\_\_\_\_

Index. No. N-21

FILED July 17, 2015

BAKER COUNTY SURVEYOR

SURVEY NO. 8-46-126