

PUBLIC LAND SURVEY CORNER RECORD
MALHEUR COUNTY, OREGON

Township 8 S, Range 46 E, Section 22, Corner N.E.

CORNER EVIDENCE FOUND (INCLUDING ACCESSORIES): NO CORNER EVIDENCE FOUND.

CORNER LOCATION DETERMINED USING A PARTITION PLAT DONE BY HANLEY ENGINEERING IN 1993 SURVEY

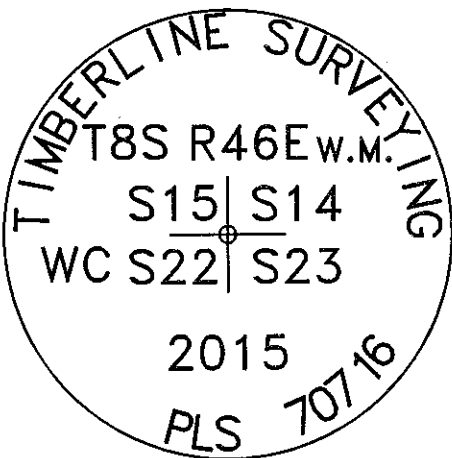
NO. 8-46-51.

Description of New Monument, Accessories, or Changes: _____

SET ALUMINUM CAP WITH FENO MONUMENT AS A WITNESS CORNER 150' SOUTH OF THE TRUE CORNER.

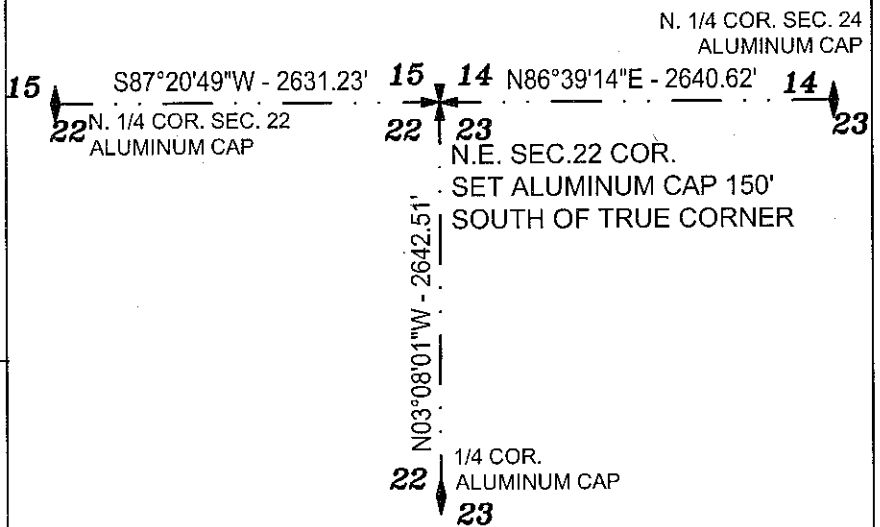
MONUMENT SET FLUSH WITH THE GROUND AND MARKED AS SHOWN.

Monument Detail



ALUMINUM CAP

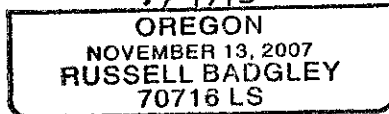
Sketch of General Area and Accessories



Stamp



7/9/15



EX, 12/31/15

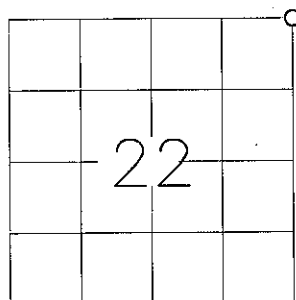
Bus. Name and Address

TIMBERLINE SURVEYING
847 PARCKCENTRE WAY STE. 3
NAMPA, IDAHO 83651

Date of Field Work:

JUNE 30, 2015

Diagram



For County Use Only

Received _____

Filed _____

Sur. No. _____

Dwg. No. _____

Index. No. N-17

FILED July 17, 2015

BAKER COUNTY SURVEYOR

SURVEY NO. 8-46-124