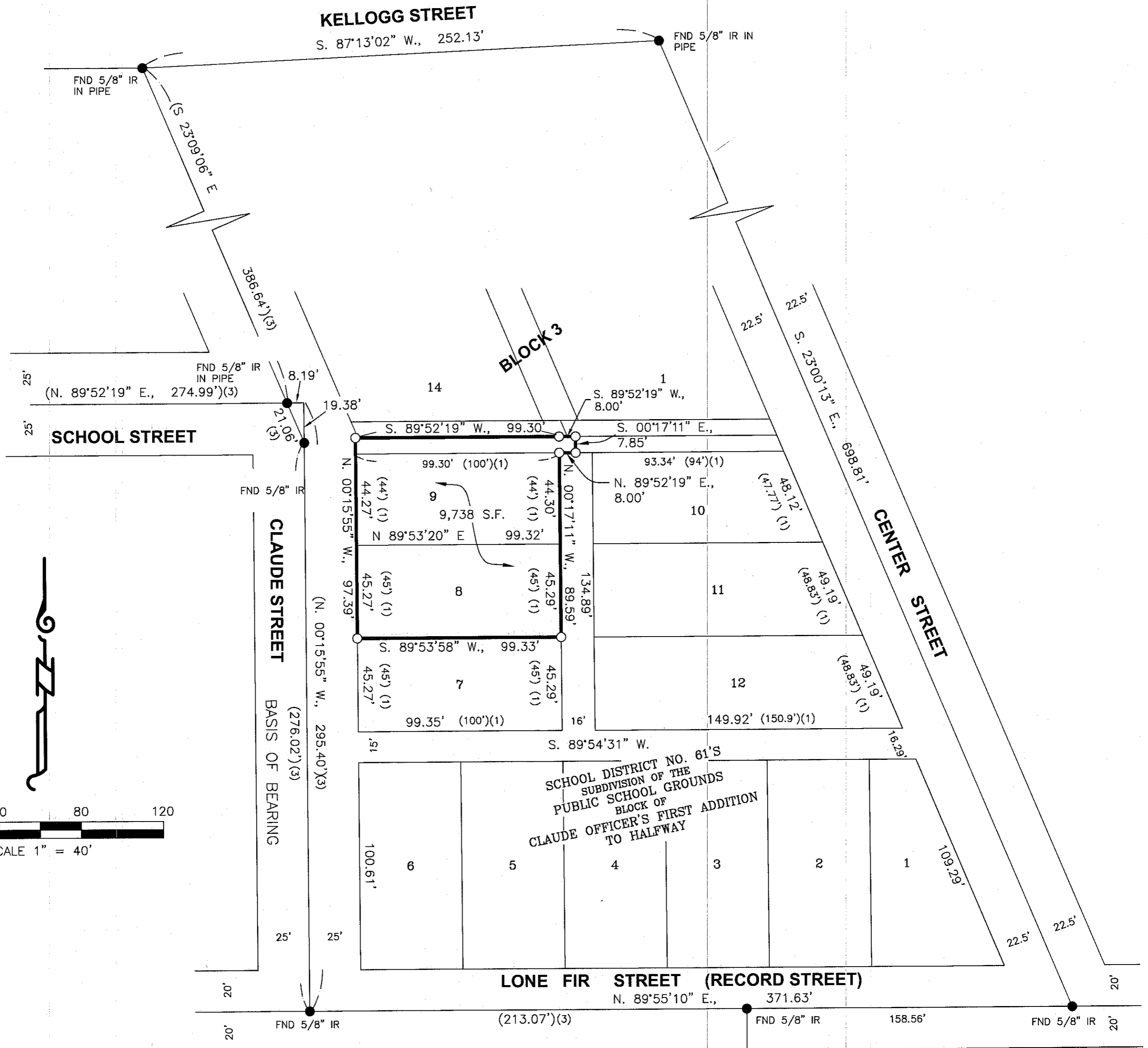


MAP OF SURVEY
LOTS 8 AND 9,
SCHOOL DISTRICT NO. 61'S
SUBDIVISION OF THE PUBLIC SCHOOL GROUNDS
BLOCK OF CLAUDE OFFICER'S FIRST ADDITION TO HALFWAY
S.W. 1/4 S.E. 1/4 SEC. 8, T.8S. R.46E., W.M.
CITY OF HALFWAY, BAKER COUNTY, OREGON
FOR: JOSEPH VAN METER
JUNE, 2013



REFERENCES

1. SCHOOL DISTRICT NO. 61'S SUBDIVISION OF THE PUBLIC SCHOOL GROUNDS BLOCK OF CLAUDE OFFICER'S FIRST ADDITION TO HALFWAY
2. PLAT OF CLAUDE OFFICER'S FIRST ADDITION TO HALFWAY
3. PARTITION PLAT NO. P2009-004
4. WARRANTY DEED DOCUMENT NO. 09 07 0043

REGISTERED PROFESSIONAL LAND SURVEYOR

Thomas J. Hanley
OREGON
 JULY 13, 1979
THOMAS J. HANLEY
 1817

Renews June 30, 2015

S. PINE STREET

LEGEND

- - SET 5/8" X 30" LONG IRON ROD W/ YPC MARKED "HANLEY ENGR. PLS 1817"
- - FOUND MONUMENT AS NOTED
- () - REFERENCE NUMBER
- FND - FOUND
- IR - IRON ROD
- YPC - YELLOW PLASTIC CAP

NARRATIVE

THE PURPOSE OF THIS SURVEY WAS TO MARK UPON THE GROUND WITH PROPER MONUMENTATION THE CORNERS OF THE PROPERTY DESCRIBED IN WARRANTY DEED DOCUMENT NO. 09 07 0043, BAKER COUNTY DEED RECORDS. STREET INTERSECTION MONUMENTATION WAS USED TO DEFINE THE STREET CENTERLINES. THE CENTERLINES WERE THEN OFFSET TO DEFINE THE RIGHT OF WAY LINES DEFINING THE EAST, SOUTH AND WEST BOUNDARY LINES OF THE "SCHOOL DISTRICT NO 61'S SUBDIVISION OF THE PUBLIC SCHOOL GROUNDS BLOCK OF CLAUDE OFFICER'S FIRST ADDITION TO HALFWAY". THE NORTH LINE OF SAID SUBDIVISION, WAS FOUND TO BE THE CONTINUATION OF THE SOUTH RIGHT OF WAY LINE OF SCHOOL STREET. THE INTERIOR LOT LINES OF SAID SUBDIVISION WERE DETERMINED BY PROPORTIONING MEASURED DISTANCES WITH THAT OF RECORD. AFTER SAID PROPORTIONING WAS COMPLETE, THE SOUTH HALF OF THE 15.7 FOOT ALLEY ADJOINING TO THE NORTH OF LOT 9, VACATED PER VACATION ORDINANCE NO. 1-7, RECORDED JANUARY 31, 1979 IN DEED 79 05 073, WAS ADDED BACK INTO LOT 9. BASIS OF BEARING IS THE CENTERLINE OF CLAUDE STREET, PER PARTITION PLAT 2009-004, BAKER COUNTY SURVEY RECORDS.

HANLEY ENGINEERING, INC.

P.O. BOX 701, 2043 MAIN STREET, BAKER CITY, OREGON 97814 (541) 523-3803

FILED Aug. 9, 2013
 BAKER COUNTY SURVEYOR
 SURVEY NO. 8-416-119