

# LAND PARTITION PLAT NO. P2009-009

BEING A PARTITION OF PARCEL 2 OF PARTITION PLAT NO. P2000-003  
SITUATED IN THE SW1/4SE1/4 OF SECTION 16 AND IN THE  
N1/2NE1/4 OF SECTION 21, T.8S., R.46E., W.M.,  
BAKER COUNTY, OREGON  
SURVEY COMPLETED MARCH 25, 2009

## LEGEND

- FOUND 2 1/2" BRASS DISC SET BELOW THE PAVED ROAD SURFACE FROM SURVEY NO. 8-46-20
- FOUND 5/8" IRON PIN - NO CAP FROM SURVEY NO. 8-46-4
- FOUND 5/8" IRON PIN WITH ATTACHED YELLOW PLASTIC CAP MARKED "HANLEY ENGR PLS 1206" FROM LAND PARTITION PLAT NO. P1993-011
- FOUND 5/8" IRON PIN WITH ATTACHED YELLOW PLASTIC CAP MARKED "HANLEY ENGR PLS 1206" FROM SURVEY NO. 8-46-54
- FOUND 5/8" IRON PIN WITH ATTACHED YELLOW PLASTIC CAP MARKED "PLS 899" FROM LAND PARTITION PLAT NO. 2000-003
- ( ) RECORD BEARING AND DISTANCE FROM O.S.H.D. DRAWING NO. 58-30-19
- [ ] RECORD BEARING AND DISTANCE FROM SURVEY NO. 8-46-4
- 1[ ] RECORD BEARING AND DISTANCE FROM LAND PARTITION PLAT NO. 1993-011
- 2[ ] RECORD BEARING AND DISTANCE FROM SURVEY NO. 8-46-54
- 3[ ] RECORD BEARING AND DISTANCE FROM LAND PARTITION PLAT NO. 2000-003
- 4[ ] RECORD BEARING AND DISTANCE FROM LAND PARTITION PLAT NO. 2003-017
- 5[ ] RECORD BEARING AND DISTANCE FROM SURVEY NO. 8-46-20
- X-X FENCE LINE



## BASIS OF BEARINGS

RECORD MAP OF SURVEY NO. 8-46-20  
AS SHOWN IN DETAIL "A"

### LINE TABLE

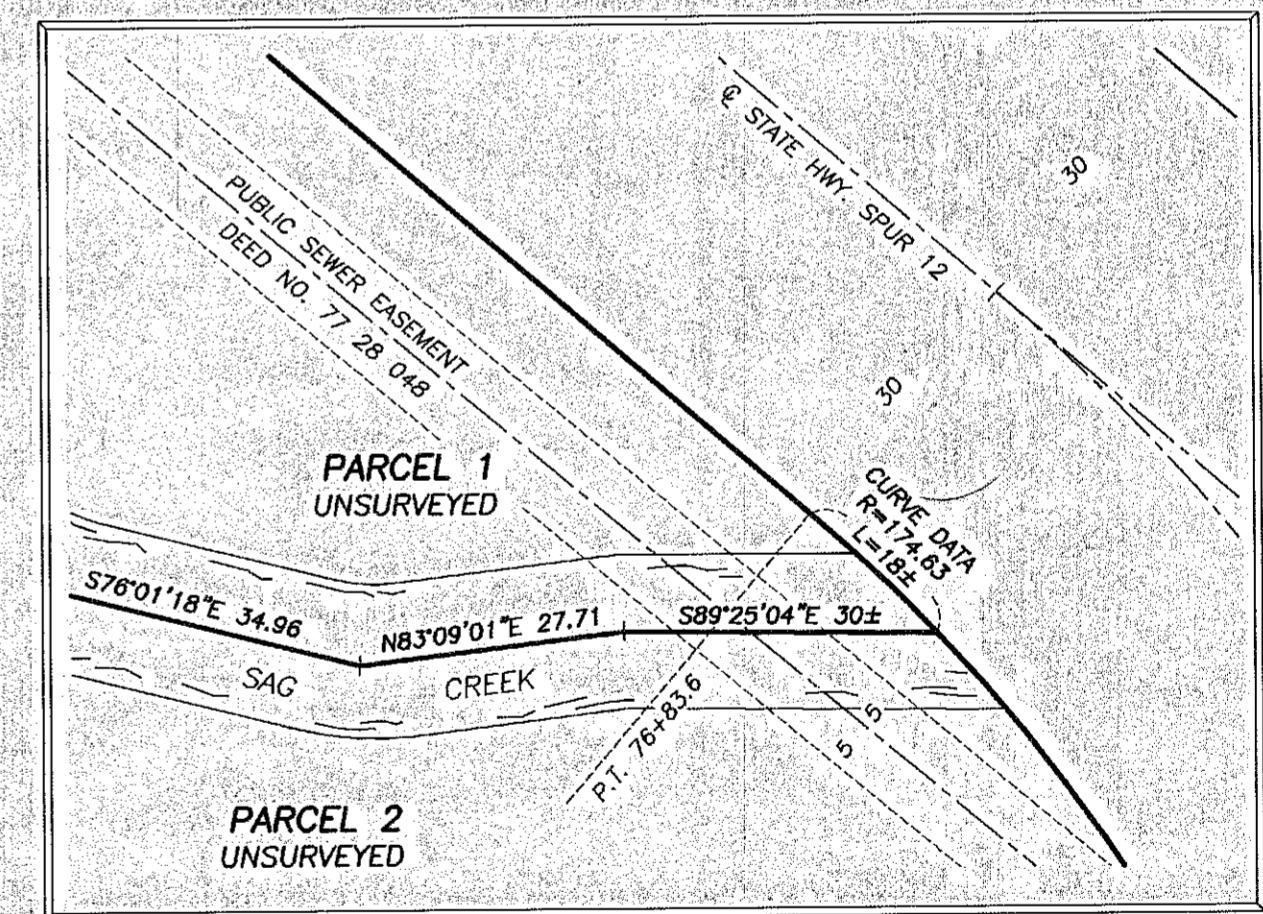
LINE	BEARING	DIST.
L1	S85°44'40"E	65.80
L2	N83°30'31"E	46.52
L3	N83°30'31"E	94.44
L4	N68°38'51"E	84.22
L5	N83°51'48"E	222.92
L6	S86°07'27"E	157.21
L7	S89°08'36"E	269.42
L8	N80°00'35"E	48.56
L9	S74°26'49"E	124.32
L10	N75°57'36"E	39.33
L11	S86°14'00"E	49.81
L12	S51°45'09"E	111.19
1[L13]	N89°44'W	94±
1[L14]	S25°37'E	41±
L15	N25°38'19"W	154.80
2[L15]	N25°40'W	154.78
L16	S00°13'58"E	69.76
3[L16]	S00°03'33"E	69.69

### CURVE TABLE

CURVE	RADIUS	DELTA	LENGTH	LONG CHORD BEARING-DIST.
C1	204.63	113°51'00"	406.60	N07°27'27"E 342.94
C2	174.63	113°51'00"	347.00	N07°27'27"E 292.66
C3	174.63	N/A	329±	TO C SAG CREEK
(C1)	N/A	113°51'	406.6	N/A

## DETAIL "B"

SCALE: 1"=20'



## DETAIL "A"

SCALE: 1"=300'

### BASIS OF BEARINGS

5[S89°51'50"W 2637.60]  
S89°51'50"W 2637.60

8:9

17:16

1/4 COR.

REGISTERED PROFESSIONAL LAND SURVEYOR

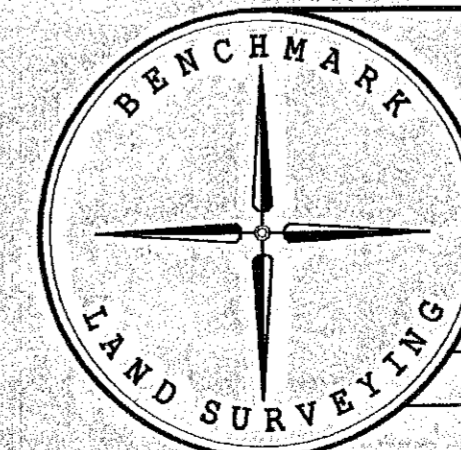
*Jason L. Hatfield*

OREGON  
NOVEMBER 30, 2007  
JASON L. HATFIELD  
#69454

EXPIRES: 6/30/2011

I DO HEREBY CERTIFY THAT THIS IS A TRUE AND EXACT COPY OF LAND PARTITION PLAT NO. P2009-009

*Jason L. Hatfield*  
BENCHMARK LAND SURVEYING



BENCHMARK LAND SURVEYING  
217 N. CANYON BLVD. JOHN DAY, OREGON  
2101 MAIN STREET, STE 223 BAKER CITY, OREGON  
541-575-1251 ~ 800-699-0516

LAND PARTITION  
BEING A PARTITION OF PARCEL 2 OF PARTITION PLAT NO. P2000-003  
SITUATED IN THE SW1/4SE1/4 OF SECTION 16 AND IN THE  
N1/2NE1/4 OF SECTION 21, T.8S., R.46E., W.M.  
BAKER COUNTY, OREGON

SURVEYED FOR	ELLINGSON LUMBER COMPANY	
SURVEYED BY	JLH & MCS	3/25/2009
Scale: 1"=200'	Drawn by: JLH	SHEET 1 OF 2

FILED Oct 28 2009

BAKER COUNTY SURVEYOR  
SURVEY NO. 8-46-109