

B04 07 0087

B04 07 0088

B04 07 0089

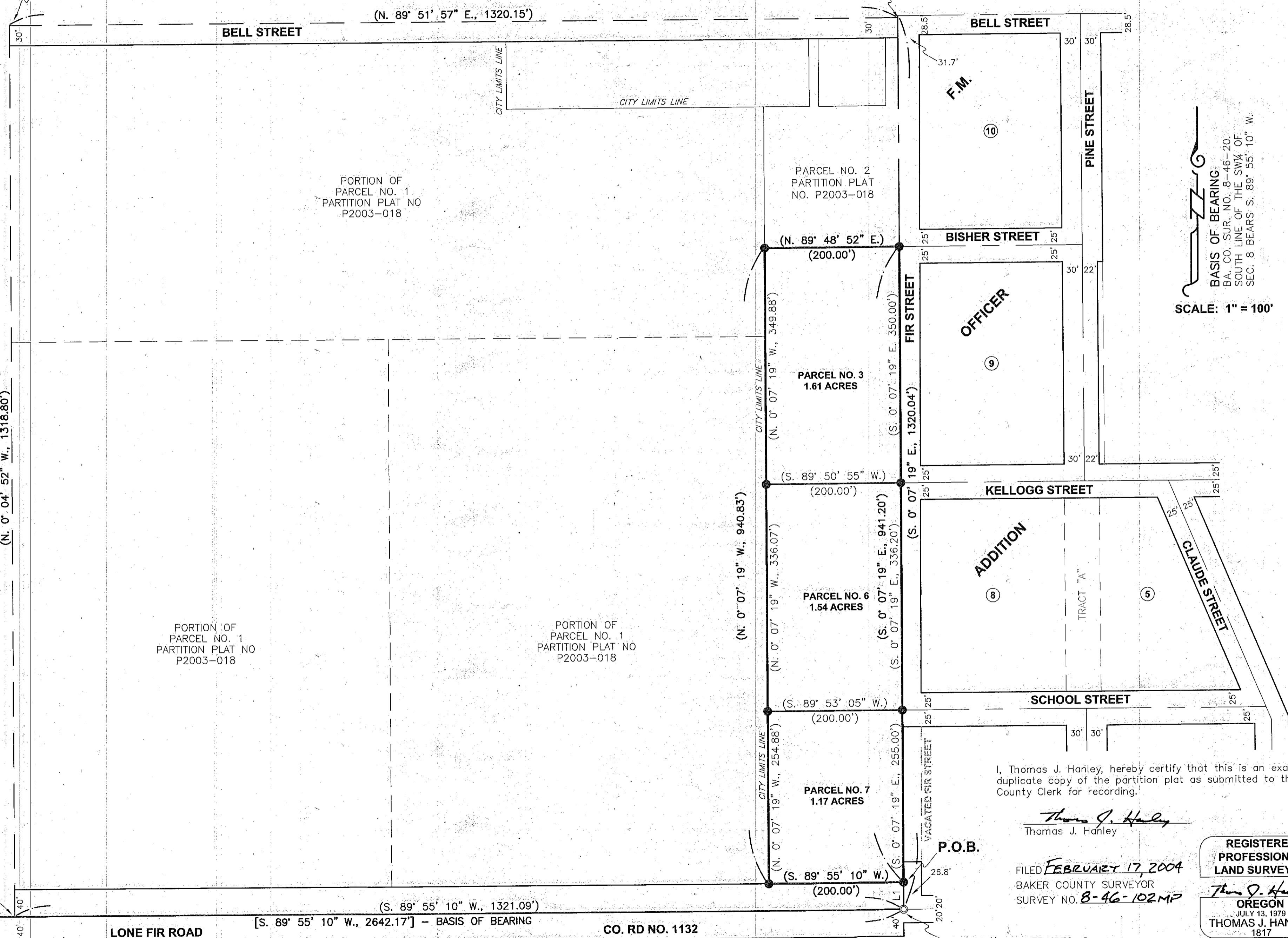
SE 1/4 SW 1/4, SECTION 8
T. 8 S., R. 46 E., W.M.

PARTITION PLAT NO.

P2004-003

NW CORNER OF THE
SE 1/4 SW 1/4, SEC. 8

NE CORNER OF THE
SE 1/4 SW 1/4, SEC. 8



BASIS OF BEARING
 BA. CO. SUR. NO. 8-46-20
 SOUTH LINE OF THE SW 1/4 OF
 SEC. 8 BEARS S. 89° 55' 10" W.

SCALE: 1" = 100'

I, Thomas J. Hanley, hereby certify that this is an exact duplicate copy of the partition plat as submitted to the Baker County Clerk for recording.

Thomas J. Hanley
 Thomas J. Hanley

FILED FEBRUARY 17, 2004
 BAKER COUNTY SURVEYOR
 SURVEY NO. 8-46-102MP

REGISTERED PROFESSIONAL LAND SURVEYOR
Thomas J. Hanley
OREGON
 JULY 13, 1979
THOMAS J. HANLEY
 1817

SOUTH 1/4 CORNER, SEC. 8

Renews June 30, 2005

SW CORNER OF THE
SE 1/4 SW 1/4, SEC. 8

(1321.08')

LONE FIR ROAD

(S. 89° 55' 10" W., 2642.17') - BASIS OF BEARING

CO. RD NO. 1132

SW CORNER SEC. 8