

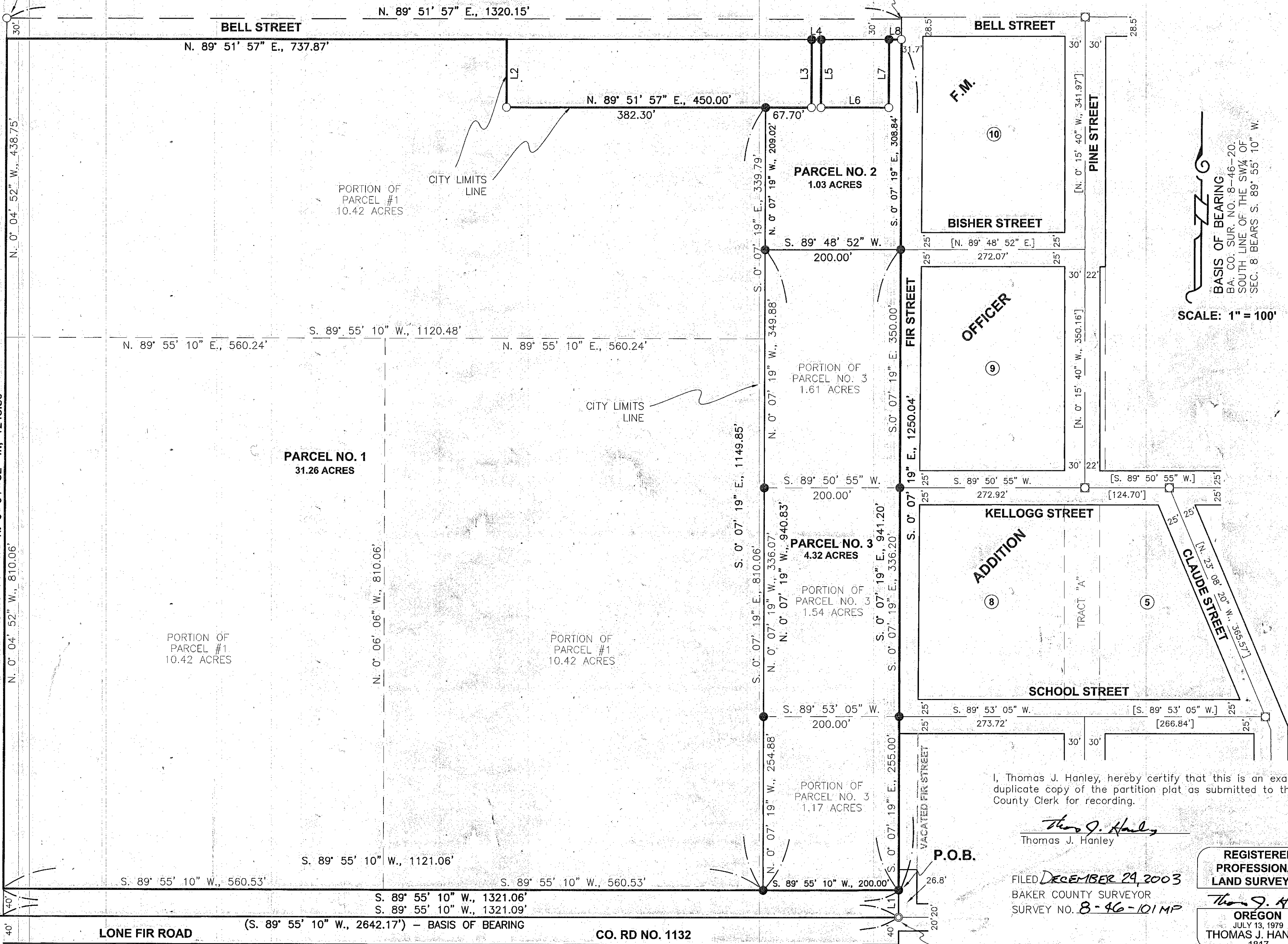
SE 1/4 SW 1/4, SECTION 8
T. 8 S., R. 46 E., W.M.

PARTITION PLAT NO.

P2003-018

NW CORNER OF THE
SE 1/4 SW 1/4, SEC. 8

NE CORNER OF THE
SE 1/4 SW 1/4, SEC. 8



BASIS OF BEARING
 B.A. CO. SUR. NO. 8-46-20.
 SOUTH LINE OF THE SW 1/4 OF
 SEC. 8 BEARS S. 89° 55' 10" W.

SCALE: 1" = 100'

I, Thomas J. Hanley, hereby certify that this is an exact duplicate copy of the partition plat as submitted to the Baker County Clerk for recording.

Thomas J. Hanley
 Thomas J. Hanley

**REGISTERED
 PROFESSIONAL
 LAND SURVEYOR**

FILED DECEMBER 29, 2003
 BAKER COUNTY SURVEYOR
 SURVEY NO. 8-46-101MP

Thomas J. Hanley
THOMAS J. HANLEY
 JULY 13, 1979
 1817

Renews June 30, 2005

SW CORNER OF THE
SE 1/4 SW 1/4, SEC. 8

P.O.B.

SOUTH 1/4 CORNER, SEC. 8

SW CORNER SEC. 8