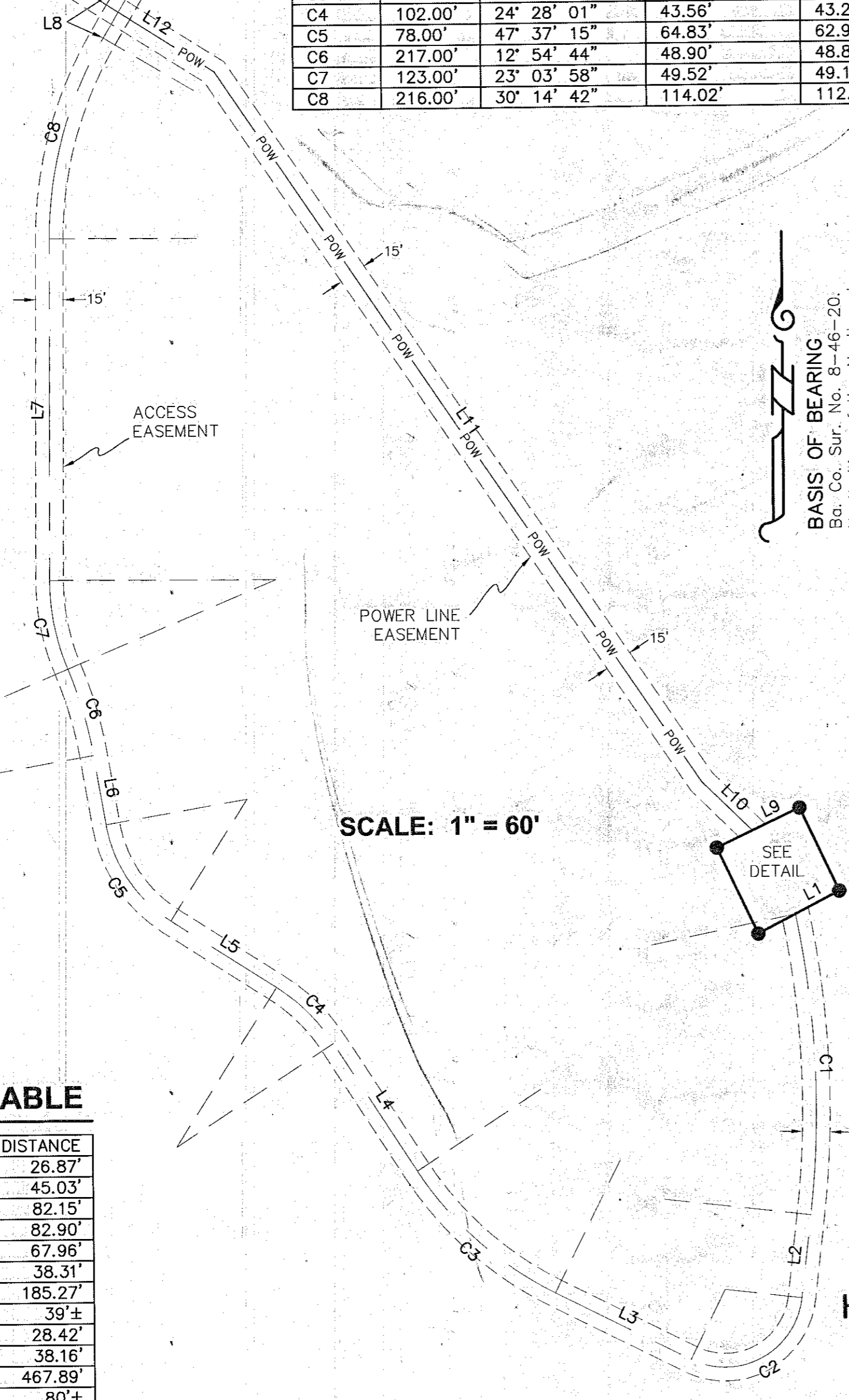


EASEMENT CURVE TABLE

CURVE	RADIUS	DELTA ANGLE	ARC LENGTH	CHORD LENGTH	CHORD BEARING
C1	515.00'	18° 14' 57"	164.03'	163.34'	S. 2° 26' 38" E.
C2	42.00'	109° 54' 17"	80.56'	68.77'	S. 61° 37' 59" W.
C3	190.00'	30° 31' 25"	101.22'	100.03'	N. 48° 09' 10" W.
C4	102.00'	24° 28' 01"	43.56'	43.23'	N. 45° 07' 28" W.
C5	78.00'	47° 37' 15"	64.83'	62.98'	N. 33° 32' 51" W.
C6	217.00'	12° 54' 44"	48.90'	48.80'	N. 16° 11' 36" W.
C7	123.00'	23° 03' 58"	49.52'	49.18'	N. 11° 07' 00" W.
C8	216.00'	30° 14' 42"	114.02'	112.70'	N. 15° 32' 20" E.



SCALE: 1" = 60'

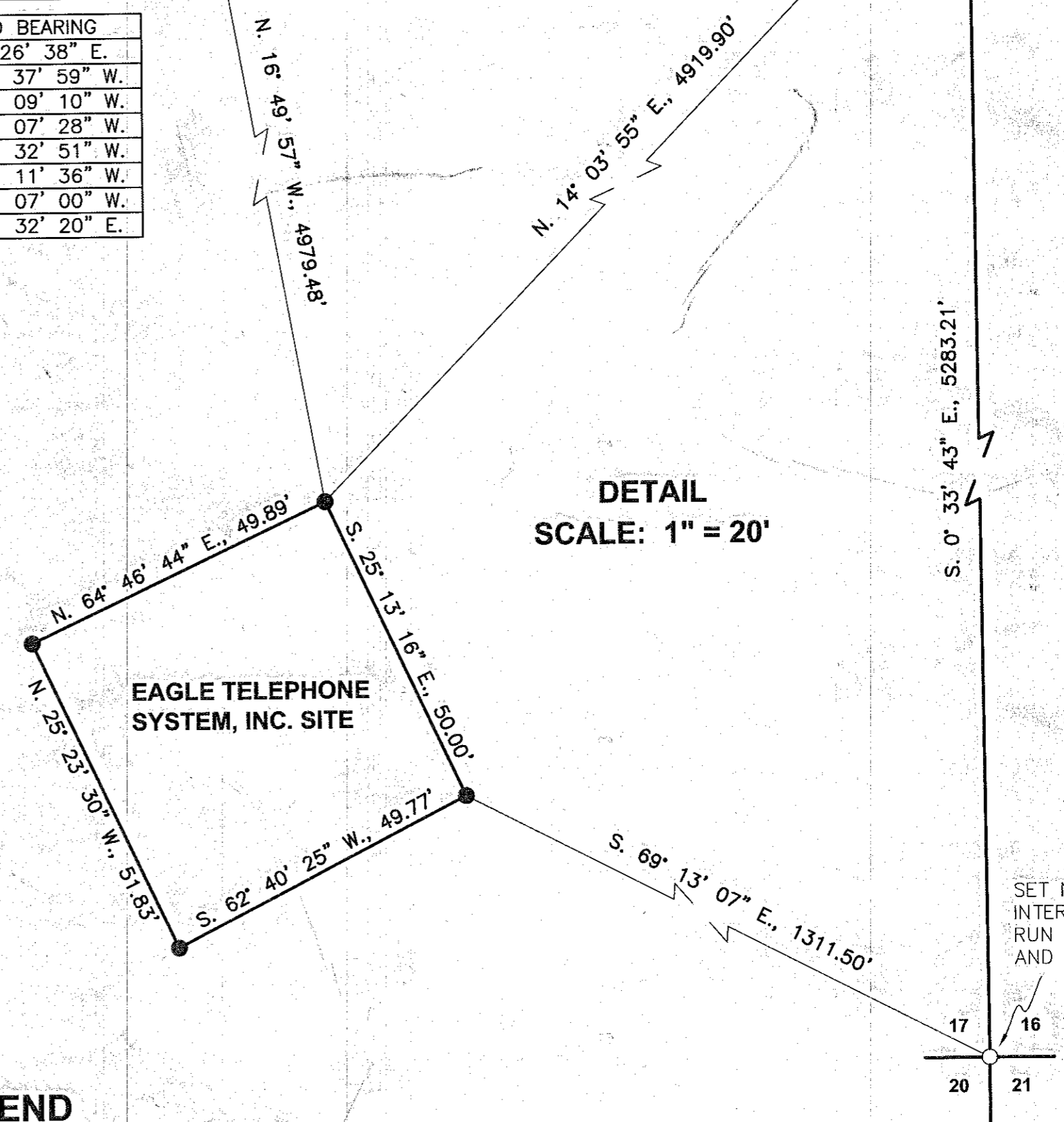
EASEMENT LINE TABLE

LINE	BEARING	DISTANCE
L1	S. 62° 40' 25" W.	26.87'
L2	S. 6° 40' 51" W.	45.03'
L3	N. 63° 24' 52" W.	82.15'
L4	N. 32° 53' 27" W.	82.90'
L5	N. 57° 21' 29" W.	67.96'
L6	N. 9° 44' 14" W.	38.31'
L7	N. 0° 24' 59" E.	185.27'
L8	N. 30° 39' 41" E.	39'±
L9	S. 64° 46' 44" W.	28.42'
L10	N. 45° 34' 57" W.	38.16'
L11	N. 34° 02' 05" W.	467.89'
L12	N. 57° 38' 20" W.	80'±

NORTH ¼ CORNER, SECTION 17
FD 2 ½" BRASS DISK

BASIS OF BEARING
Ba. Co. Surv. No. 8-46-20:
North Line of the Northeast
quarter of Section 17 bears
S. 89° 55' 10" W.

BASIS OF BEARING
(S. 89° 51' 50" W., 2637.60')



DETAIL
SCALE: 1" = 20'

S. 0° 33' 43" E., 5283.21'

SET NAIL AT FENCE
INTERSECTION. FENCES
RUN NORTH, SOUTH,
AND EAST.

LEGEND

- Set 5/8" rebar with plastic cap marked "HANLEY ENGR. PLS 1817".
- Found, monument as noted.
- ⊙ Found, brass disk monument as noted.
- () Record Data Per Ba. Co. Surv. No. 8-46-20.

NARRATIVE

The purpose of this survey for Eagle Telephone System, Inc., is to mark upon the ground, with proper monumentation, the corners of a parcel leased for a telecommunications site. The North quarter corner and Northeast corner of Section 17 were recovered this survey as shown, and held as the basis of bearing. A fence intersection was accepted as the Southeast corner of Section 17. A nail was set at the fence intersection but was not further monumented this survey.

MAP OF SURVEY
SECTION 17, T. 8 S., R. 46 E., W.M.
Surveyed July 11, 2003
for Eagle Telephone System, Inc.
Scales as Shown

HANLEY ENGINEERING, INC.
P.O. BOX 701, 2043 MAIN STREET, BAKER CITY, OREGON 97814 (541) 523-3803

FILED August 15, 2003
BAKER COUNTY SURVEYOR
SURVEY NO. 8-46-99

**REGISTERED
PROFESSIONAL
LAND SURVEYOR**
Thomas J. Hanley
OREGON
JULY 13, 1979
THOMAS J. HANLEY
1817

Renews June 30, 2005