

SITUATED IN THE NW 1/4 AND THE NE 1/4 OF S 17; AND THE SW 1/4 AND THE SE 1/4 OF S 8; T 8 S, R 46 E, WM BAKER COUNTY, OREGON

RECORD BEARINGS & DISTANCES

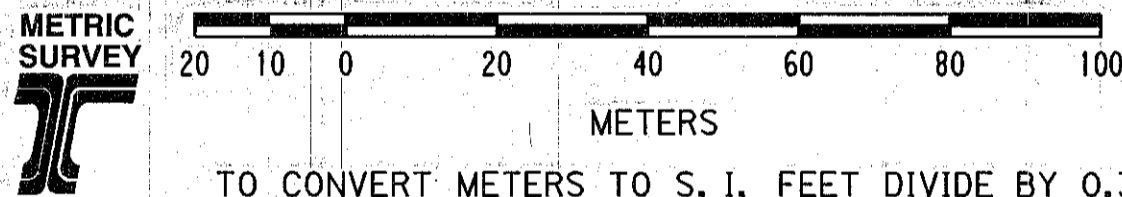
CS 8-46-48 MP:
Pt. 1052 - 1053 (Easterly 102.28 ft.)

CS 8-46-66:
Pt. 1019 - 1020 (S39°04'38"E 106.71 ft.)
Pt. 1019 - 1021 (S39°04'38"E 201.25 ft.)

PT	NORTHING	EASTING	SURVEY	DESCRIPTION
0025	200 436.004	2 680 890.193		Set 16 mm x 760 mm iron rod w/ODOT alum. cap
0026	200 559.663	2 680 814.844		Set 16 mm x 760 mm iron rod w/ODOT alum. cap
1005	200 404.684	2 680 887.160	C.S. 8-46-48 MP	Fd. 16 mm (5/8") iron rod in 100 mm (4") steel casing
1019	200 499.129	2 680 863.832	C.S. 8-46-66	Fd. 16 mm (5/8") rebar w/plastic cap, reset by coordinates
1020	200 473.876	2 680 884.319	C.S. 8-46-66	Fd. 16 mm (5/8") rebar w/plastic cap, reset by coordinates
1021	200 451.508	2 680 902.445	C.S. 8-46-66	Fd. 16 mm (5/8") rebar w/plastic cap, reset by coordinates
1052	200 414.103	2 680 836.424	C.S. 8-46-48 MP	Fd. 16 mm (5/8") iron rod w/plastic cap, reset by coordinates
1053	200 414.366	2 680 867.592	C.S. 8-46-48 MP	Fd. 16 mm (1 1/2") iron pipe, reset by coordinates



SCALE 1:1000

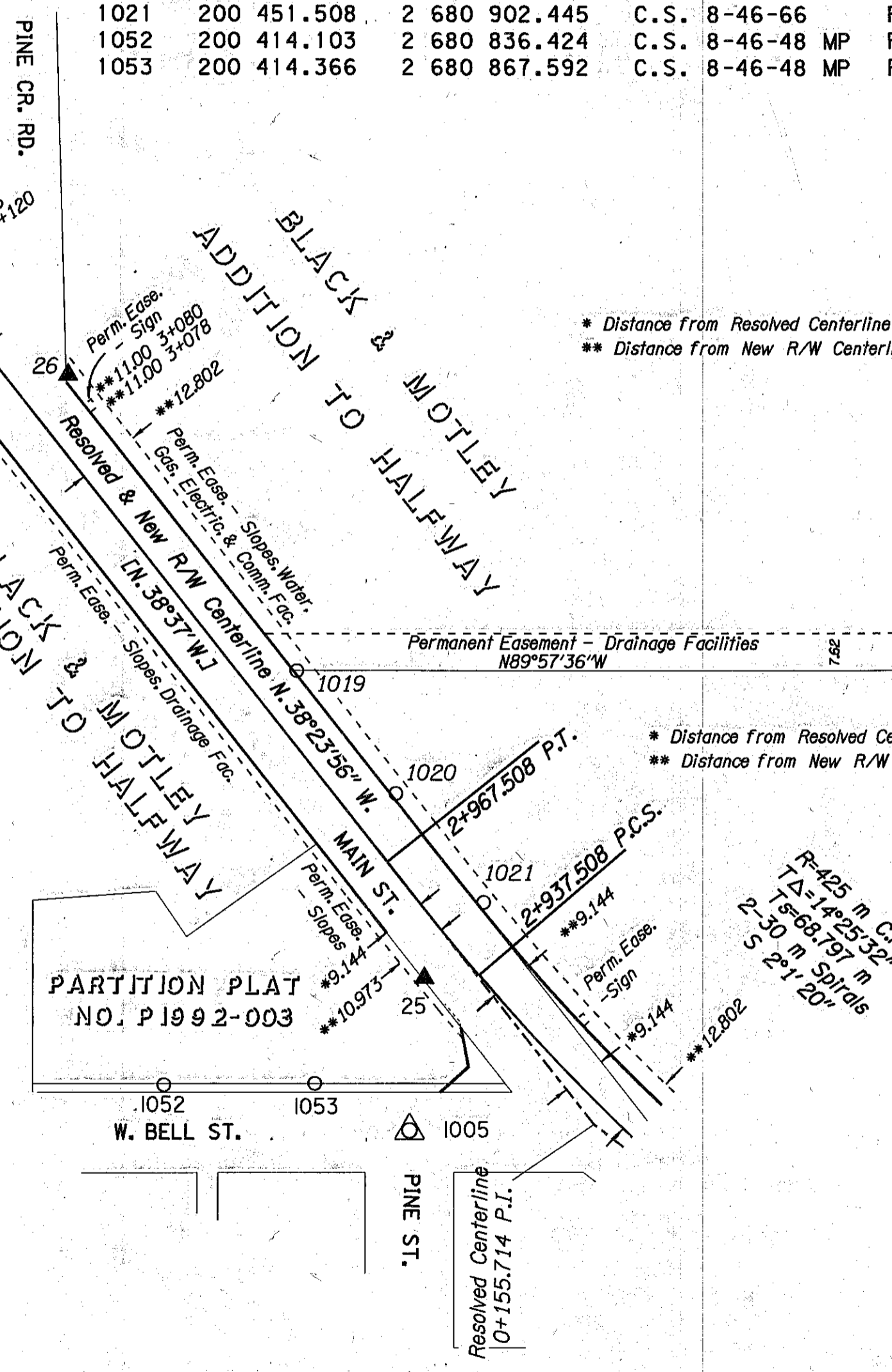


TO CONVERT METERS TO S. I. FEET DIVIDE BY 0.3048

CADD FILE NAME: 7006RWPT.2D

LEGEND

- () RECORD DATA AS NOTED
- [] RECORD DATA FROM OSHD 1928 LOCATED LINE
- FOUND MONUMENT NOTED IN LIST
- △ FOUND MONUMENT USED AS NETWORK POINT
- ▲ SET NETWORK POINT
- RESOLVED RIGHT-OF-WAY
- ADDITIONAL R/W PURCHASE
- RESOLVED EXISTING CENTERLINE
- RELOCATED CENTERLINE
- PERMANENT EASEMENT AS NOTED



RESOLVED CENTERLINE

Station	Northing	Easting
0+155.714 PI	200 405.915	2 680 925.237
0+517.005 POT	200 689.059	2 680 700.828

NEW R/W, CONSTRUCTION ALIGNMENT

Station	Northing	Easting
2+937.508 PCS	200 436.543	2 680 901.413
2+967.508 PT	200 459.832	2 680 882.505
3+260.000 POT	200 689.059	2 680 700.828

REGISTERED
PROFESSIONAL
LAND SURVEYOR

Robert E. Butler

OREGON
JULY 25, 1995
ROBERT E. BUTLER
2733

EXPIRES 12-31-99
OREGON DEPARTMENT OF TRANSPORTATION
3012 ISLAND AVENUE
LA GRANDE, OREGON

THE OREGON DEPARTMENT OF TRANSPORTATION

AMENDED HORIZONTAL CONTROL,
RECOVERY AND RETRACEMENT MAP

BAKER - COPPERFIELD HIGHWAY, HALFWAY SECTION

BAKER COUNTY

April 5 1999 to April 8, 1999 For ODOT, Region 5

3012 Island Ave., La Grande, OR 97850

Scale: 1 mm = 1.0 m

Page 8 of 8

FILED *May 18, 1999*
BAKER COUNTY SURVEYOR
SURVEY NO. *B-46-89*