

SITUATED IN THE NW 1/4 AND THE NE 1/4 OF S 17; AND THE SW 1/4 AND THE SE 1/4 OF S 8; T 8 S, R 46 E, WM BAKER COUNTY, OREGON

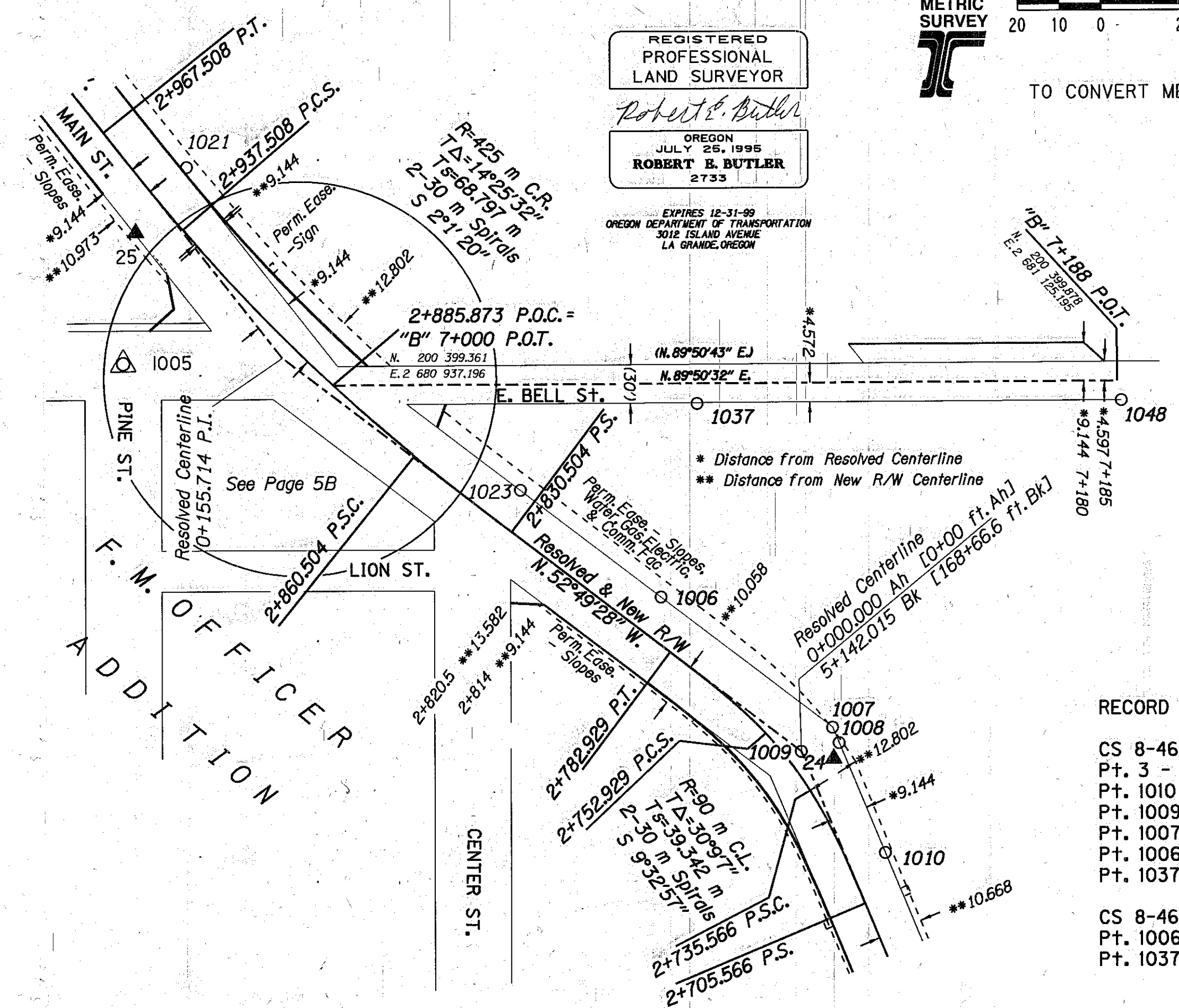
CADD FILE NAME: 7006RWPT.2D

LEGEND	
( )	RECORD DATA CS 8-46-64
[ ]	RECORD DATA OSHD LOCATED LINE 1928
○	FOUND MONUMENT NOTED IN LIST
△	FOUND MONUMENT USED AS NETWORK POINT
▲	SET NETWORK POINT
—	RESOLVED RIGHT-OF-WAY
—	ADDITIONAL R/W PURCHASE
- - -	RESOLVED EXISTING CENTERLINE
—	NEW R/W CENTERLINE
- - -	PERMANENT EASEMENT AS NOTED

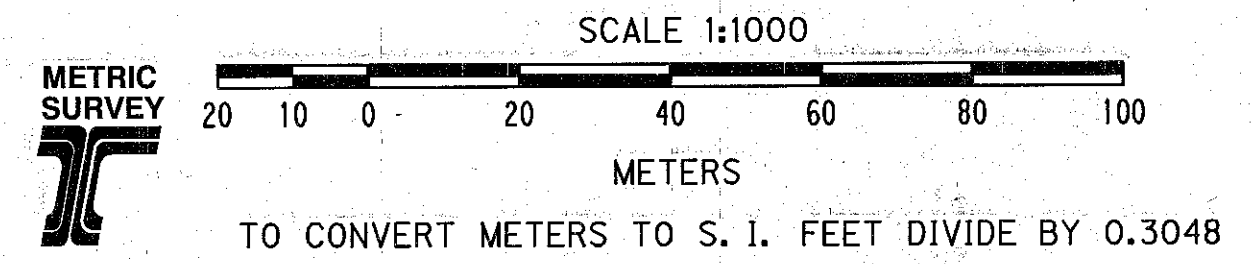
RESOLVED CENTERLINE		
Station	Northing	Easting
0+000.000 Ah	200 311.824	2 681 049.308
5+142.015 Bk		
0+155.714 P1	200 405.915	2 680 925.237
0+517.005 POT	200 689.059	2 680 700.828

NEW R/W, CONSTRUCTION ALIGNMENT		
Station	Northing	Easting
2+705.566 PS	200 275.523	2 681 064.473
2+735.566 PSC	200 302.486	2 681 051.406
2+752.929 PCS	200 316.194	2 681 040.793
2+782.929 PT	200 335.597	2 681 017.961
2+830.504 PS	200 364.344	2 680 980.054
2+860.504 PSC	200 382.751	2 680 956.366
2+937.508 PCS	200 436.543	2 680 901.413
2+967.508 PT	200 459.832	2 680 882.505

PT	NORTHING	EASTING	SURVEY	DESCRIPTION
0024	200 310.136	2 681 057.051		Set 16 mm x 760 mm iron rod w/ODOT alum. cap
0025	200 436.004	2 680 890.193		Set 16 mm x 760 mm iron rod w/ODOT alum. cap
1005	200 404.684	2 680 887.160	C.S. 8-46-48 MP	Fd. 16 mm (5/8") iron rod in 100 mm (4") steel casing
1006	200 348.754	2 681 015.814	C.S. 8-46-47	Fd. 16 mm (5/8") iron rod w/plastic cap, reset by coordinates
1007	200 317.600	2 681 056.798	C.S. 8-46-47	Fd. 16 mm (5/8") iron rod w/plastic cap
1008	200 313.875	2 681 058.357	C.S. 8-46-47	Fd. 16 mm (5/8") iron rod w/plastic cap
1009	200 311.824	2 681 049.308	C.S. 8-46-47	Fd. 19 mm (3/4") iron rod
1010	200 287.606	2 681 069.358	C.S. 8-46-47	Fd. 16 mm (5/8") rebar w/plastic cap, reset by coordinates
1021	200 451.508	2 680 902.445	C.S. 8-46-66	Fd. 16 mm (5/8") rebar w/plastic cap, reset by coordinates
1023	200 374.274	2 680 982.205	C.S. 8-46-64	Fd. 16 mm (5/8") rebar w/plastic cap reset "x" in conc. footing of fence post
1037	200 395.038	2 681 024.560	C.S. 8-46-47	Fd. 16 mm (5/8") iron rod w/plastic cap
1048	200 395.309	2 681 126.116	C.S. 8-46-47	Fd. 16 mm (5/8") iron rod w/plastic cap



REGISTERED PROFESSIONAL LAND SURVEYOR  
*Robert E. Butler*  
 OREGON JULY 25, 1995  
**ROBERT E. BUTLER**  
 2733  
 EXPIRES 12-31-99  
 OREGON DEPARTMENT OF TRANSPORTATION  
 3012 ISLAND AVENUE  
 LA GRANDE, OREGON



RECORD BEARING & DISTANCE

CS 8-46-47:  
 Pt. 3 - 1009 (N22°40'40"W 1102.99 ft.)  
 Pt. 1010 - 1008 (N22°40'40"W 93.37 ft.)  
 Pt. 1009 - 1008 (N67°19'20"E 30.00 ft.)  
 Pt. 1007 - 1008 (S22°40'40"E 13.46 ft.)  
 Pt. 1006 - 1007 (S52°46'25"E 169.00 ft.)  
 Pt. 1037 - 1038 (N89°50'43"E 217.47 ft.)

CS 8-46-64:  
 Pt. 1006 - 1023 (N52°26'45"W 138.24 ft.)  
 Pt. 1037 - 1038 (N89°50'43"E 333.33 ft.)

THE OREGON DEPARTMENT OF TRANSPORTATION  
 AMENDED HORIZONTAL CONTROL,  
 RECOVERY AND RETRACEMENT MAP  
 BAKER - COPPERFIELD HIGHWAY, HALFWAY SECTION  
 BAKER COUNTY  
 April 5, 1999 to April 8, 1999 For ODOT, Region 5  
 3012 Island Ave., La Grande, OR 97850  
 Scale: 1 mm = 1.0 m Page 7 of 8

FILED MAY 18, 1999  
 BAKER COUNTY SURVEYOR  
 SURVEY NO. B-4C-88