

SITUATED IN THE NW 1/4 AND THE NE 1/4 OF S 17; AND THE SW 1/4 AND THE SE 1/4 OF S 8; T 8 S, R 46 E, WM BAKER COUNTY, OREGON

PT	NORTHING	EASTING	SURVEY	DESCRIPTION
0003	200 001.820	2 681 178.811		Fd. 19 mm (3/4") iron rod, reset 16 mm x 760 mm iron rod w/ODOT alum. cap
008A	200 001.522	2 681 086.102	C.S. 8-46-35	Fd. 16 mm (5/8") iron rod in 100 mm (4") steel casing
008B	200 007.595	2 681 076.072	C.S. 8-46-42	Fd. 25 mm (1") iron pipe
008C	200 197.586	2 681 002.868	C.S. 8-46-42	Fd. 16 mm (5/8") iron rod in 100 mm (4") steel casing
0022	199 985.880	2 681 196.534		Set 16 mm x 760 mm iron rod w/ODOT alum. cap
0023	200 236.107	2 681 071.793		Set 16 mm x 760 mm iron rod w/ODOT alum. cap
1010	200 287.606	2 681 069.358	C.S. 8-46-47	Fd. 16 mm (5/8") rebar w/plastic cap, reset by coordinates
1011	200 262.629	2 681 079.774	C.S. 8-46-62 MP	Fd. 16 mm (5/8") rebar w/plastic cap, reset by coordinates
1012	200 201.350	2 681 105.320		Fd. 25 mm (1") I.D. galvanized pipe, reset 16 mm x 760 mm iron rod w/ODOT alum. cap
1013	200 179.859	2 681 114.319		Fd. 19 mm (3/4") iron rod, reset by coordinates
1024	199 973.702	2 681 180.942	C.S. 8-46-31	Fd. 9 mm (3/8") lead plug set in concrete, reset 16 mm x 760 mm iron rod w/ODOT alum. cap
1029	200 073.389	2 681 139.040	C.S. 8-46-42	Fd. 16 mm (5/8") rebar w/plastic cap, reset 16 mm x 760 mm iron rod w/ODOT alum. cap
1030	200 087.435	2 681 133.153	C.S. 8-46-42	Fd. 16 mm (5/8") rebar w/plastic cap
1031	200 119.377	2 681 138.007		Fd. lead plug in walk, reset 16 mm x 760 mm iron rod w/ODOT alum. cap
1032	200 141.429	2 681 130.447		Fd. bolt, reset 16 mm x 760 mm iron rod w/ODOT alum. cap
1033	200 121.408	2 681 138.630	C.S. 6-46-60	Fd. 'PK' nail in sidewalk, reset 16 mm x 760 mm iron rod w/ODOT alum. cap
1034	200 121.270	2 681 138.600	C.S. 8-46-60	Fd. lead plug in walk, reset 16 mm x 760 mm iron rod w/ODOT alum. cap
1035	200 097.171	2 681 148.508		Fd. lead plug in sidewalk, reset 16 mm x 760 mm iron rod w/ODOT alum. cap
1036	200 234.627	2 681 081.570	C.S. 8-46-57	Fd. 16 mm (5/8") iron rod, reset 16 mm x 760 mm iron rod w/ODOT alum. cap
1055	200 108.499	2 681 144.030		Fd. 16 mm (5/8") iron rod with plastic cap
1056	200 068.328	2 681 160.820	C.S. 8-46-76	Fd. 16 mm (5/8") iron rod with plastic cap

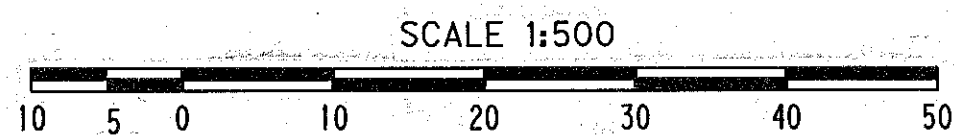
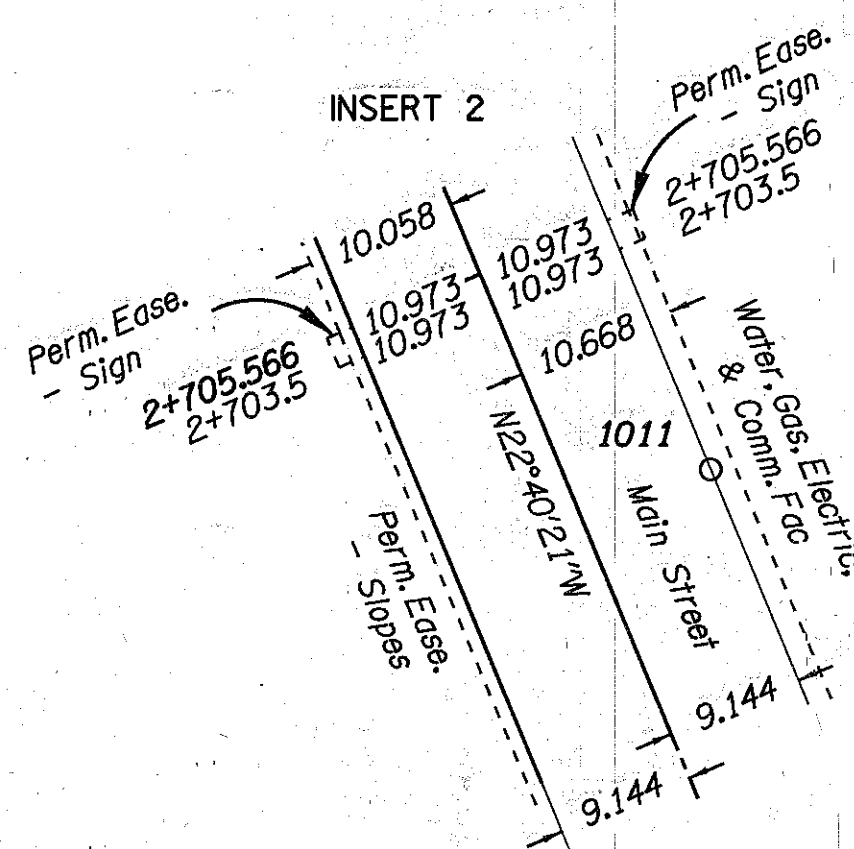
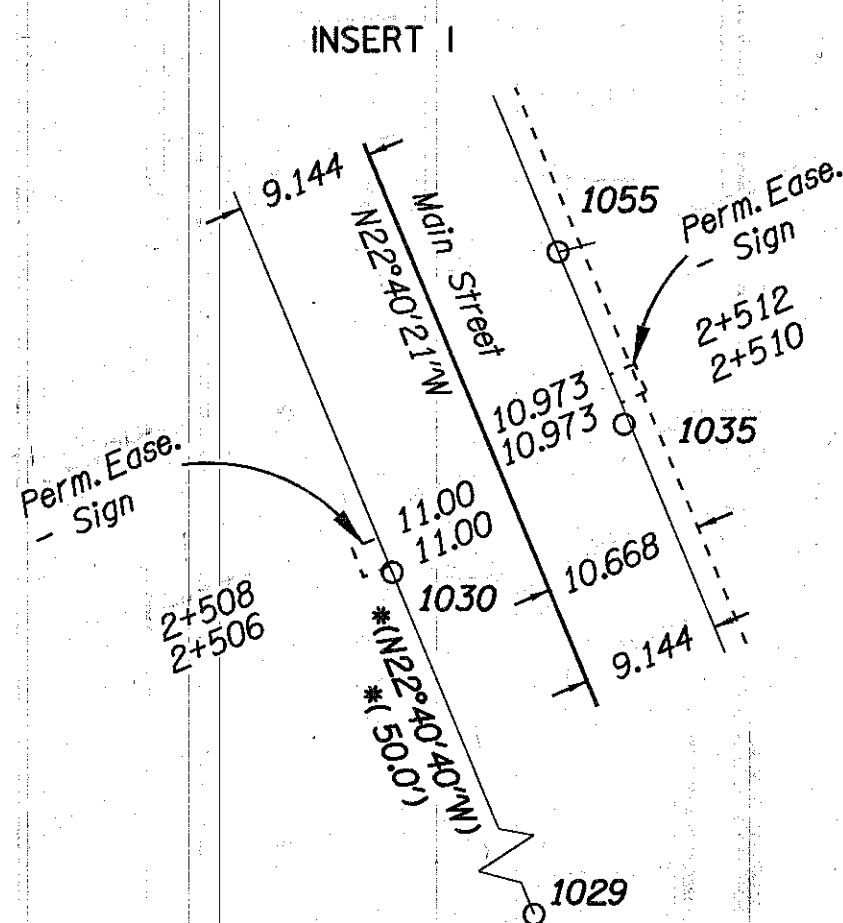
REGISTERED
PROFESSIONAL
LAND SURVEYOR
Robert E. Butler
OREGON
JULY 25, 1995
ROBERT E. BUTLER
2733

EXPIRES 12-31-99
OREGON DEPARTMENT OF TRANSPORTATION
3012 ISLAND AVENUE
LA GRANDE, OREGON

CADD FILE NAME: 7006RWPT.2D

LEGEND

- () RECORD DATA
- FOUND MONUMENT NOTED IN LIST
- △ FOUND MONUMENT USED AS NETWORK POINT
- ▲ SET NETWORK POINT
- RESOLVED RIGHT-OF-WAY
- ADDITIONAL R/W PURCHASE
- RESOLVED EXISTING CENTERLINE
- NEW R/W CENTERLINE
- PERMANENT EASEMENT AS NOTED



TO CONVERT METERS TO S. I. FEET DIVIDE BY 0.3048

THE OREGON DEPARTMENT OF TRANSPORTATION

AMENDED HORIZONTAL CONTROL,
RECOVERY AND RETRACEMENT MAP

BAKER - COPPERFIELD HIGHWAY, HALFWAY SECTION

BAKER COUNTY

April 5, 1999 to April 8, 1999 For ODOT, Region 5

3012 Island Ave., La Grande, OR 97850

Scale: 1 mm = 0.5 m

Page 6A of 8

FILED *MAY 18, 1999*
BAKER COUNTY SURVEYOR
SURVEY NO. *8-46-87*