

SITUATED IN THE NW 1/4 AND THE NE 1/4 OF S 17; AND THE SW 1/4 AND THE SE 1/4 OF S 8; T 8 S, R 46 E, WM BAKER COUNTY, OREGON

CADD FILE NAME: 7006RWPT.2D

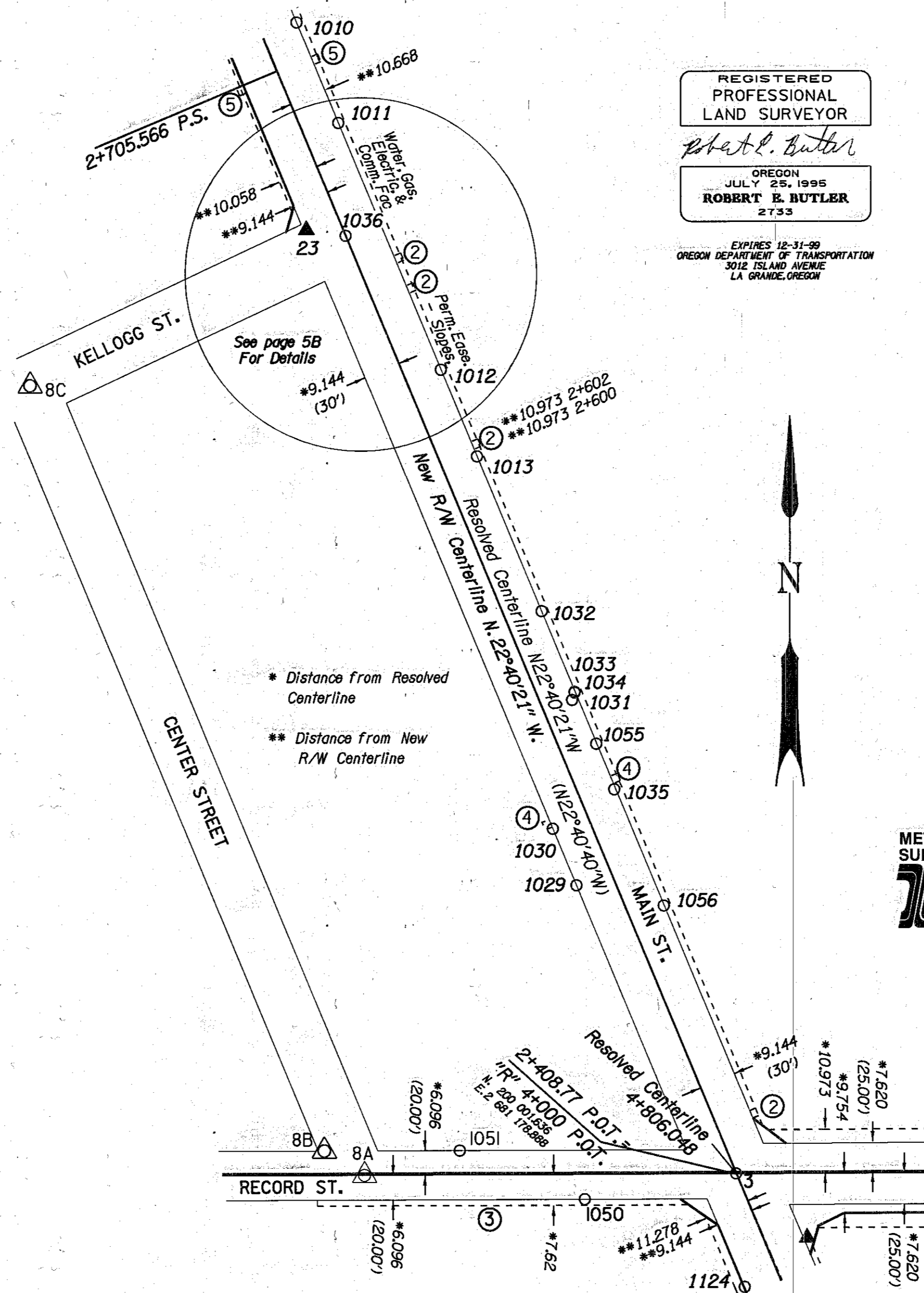
LEGEND	
( )	RECORD DATA FROM CS 8-46-42, CS 8-46-55, CS 8-46-56, CS 8-46-57 OR CS 8-46-60
○	FOUND MONUMENT NOTED IN LIST
△	FOUND MONUMENT USED AS NETWORK POINT
▲	SET NETWORK POINT
—	RESOLVED RIGHT-OF-WAY
—	ADDITIONAL R/W PURCHASE
- - -	RESOLVED EXISTING CENTERLINE
—	NEW R/W CENTERLINE
- - -	PERMANENT EASEMENT AS NOTED
—	SECTION LINE

RESOLVED CENTERLINE		
Station	Northing	Easting
4+806.048 POT	200 001.820	2 681 178.811
5+142.015 BK	200 311.824	2 681 049.308
0+000.000 AH		

NEW R/W, CONSTRUCTION ALIGNMENT		
Station	Northing	Easting
2+408.770 POT	200 001.636	2 681 178.888
2+705.566 PS	200 275.523	2 681 064.473

NOTES

- ① Permanent easement for slopes
- ② Permanent sign easement
- ③ Permanent easement for slopes, water, gas, electric, and comm. facilities
- ④ See page 6A, Insert 1 for Permanent Sign easement
- ⑤ See Page 6A, Insert 2 for Permanent Sign Easement



REGISTERED PROFESSIONAL LAND SURVEYOR  
*Robert E. Butler*  
 OREGON  
 JULY 25, 1995  
 ROBERT E. BUTLER  
 2733

EXPIRES 12-31-99  
 OREGON DEPARTMENT OF TRANSPORTATION  
 3012 ISLAND AVENUE  
 LA GRANDE, OREGON

See page 6A for coordinates of points

RECORD BEARINGS & DISTANCES

- CS 8-46-3:  
Pt. 1011 - 1010 (N22°45'W 87.6 ft.)  
Pt. 7 - 1010 (N62°14'20"W 2005.3 ft.)
- CS 8-46-42  
Pt. 3 - 1036 (N22°40'40"W 828.38 ft.)  
Pt. 8C - 1036 (N64°47'40"E 285.32 ft.)
- CS 8-46-57:  
Pt. 3 - 8A (S89°55'10"W 304.50 ft.)  
Pt. 8A - 8C (N23°00'W 698.81 ft.)  
Pt. 3 - 1036 (N22°40'40"W 828.38 ft.)  
Pt. 8C - 1036 (N64°47'40"E 282.32 ft.)
- CS 8-46-60:  
Pt. 1034 - 1032 (N22°45'W 72.0 ft.)  
Pt. 1033 - 1034 (0.47 ft South and 0.09 ft. West)
- CS 8-46-76:  
Pt. 1056 - 1035 (N22°45'W 103.0 ft.)

SCALE 1:1000  
 METERS  
 TO CONVERT METERS TO S. I. FEET DIVIDE BY 0.3048

THE OREGON DEPARTMENT OF TRANSPORTATION  
 AMENDED HORIZONTAL CONTROL,  
 RECOVERY AND RETRACEMENT MAP  
 BAKER - COPPERFIELD HIGHWAY, HALFWAY SECTION  
 BAKER COUNTY  
 April 5, 1999 to April 8, 1999 For ODOT, Region 5  
 3012 Island Ave., La Grande, OR 97850  
 Scale: 1 mm = 1.0 m Page 6 of 8