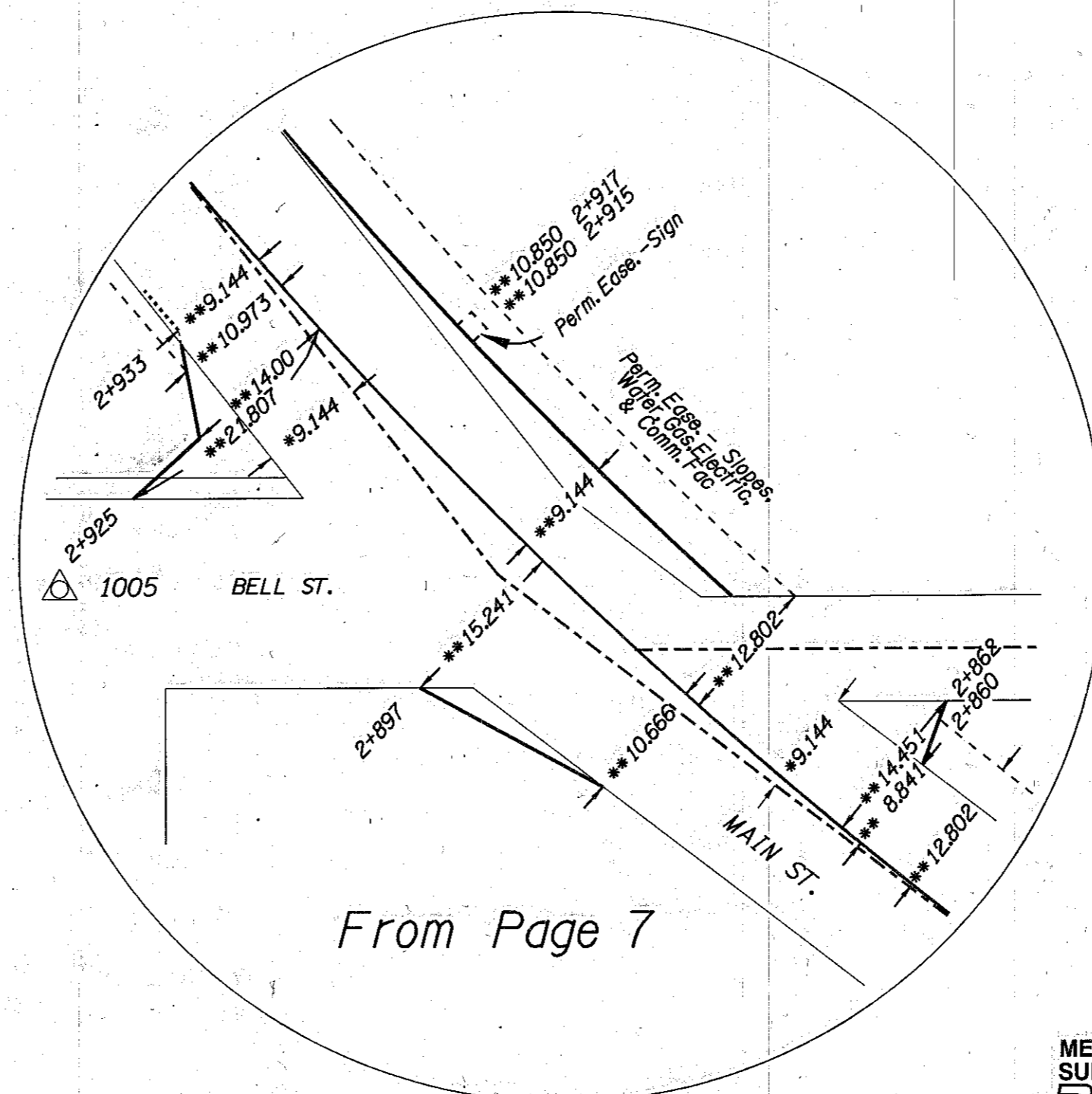


SITUATED IN THE NW 1/4 AND THE NE 1/4 OF S 17; AND THE SW 1/4 AND THE SE 1/4 OF S 8; T 8 S, R 46 E, WM BAKER COUNTY, OREGON

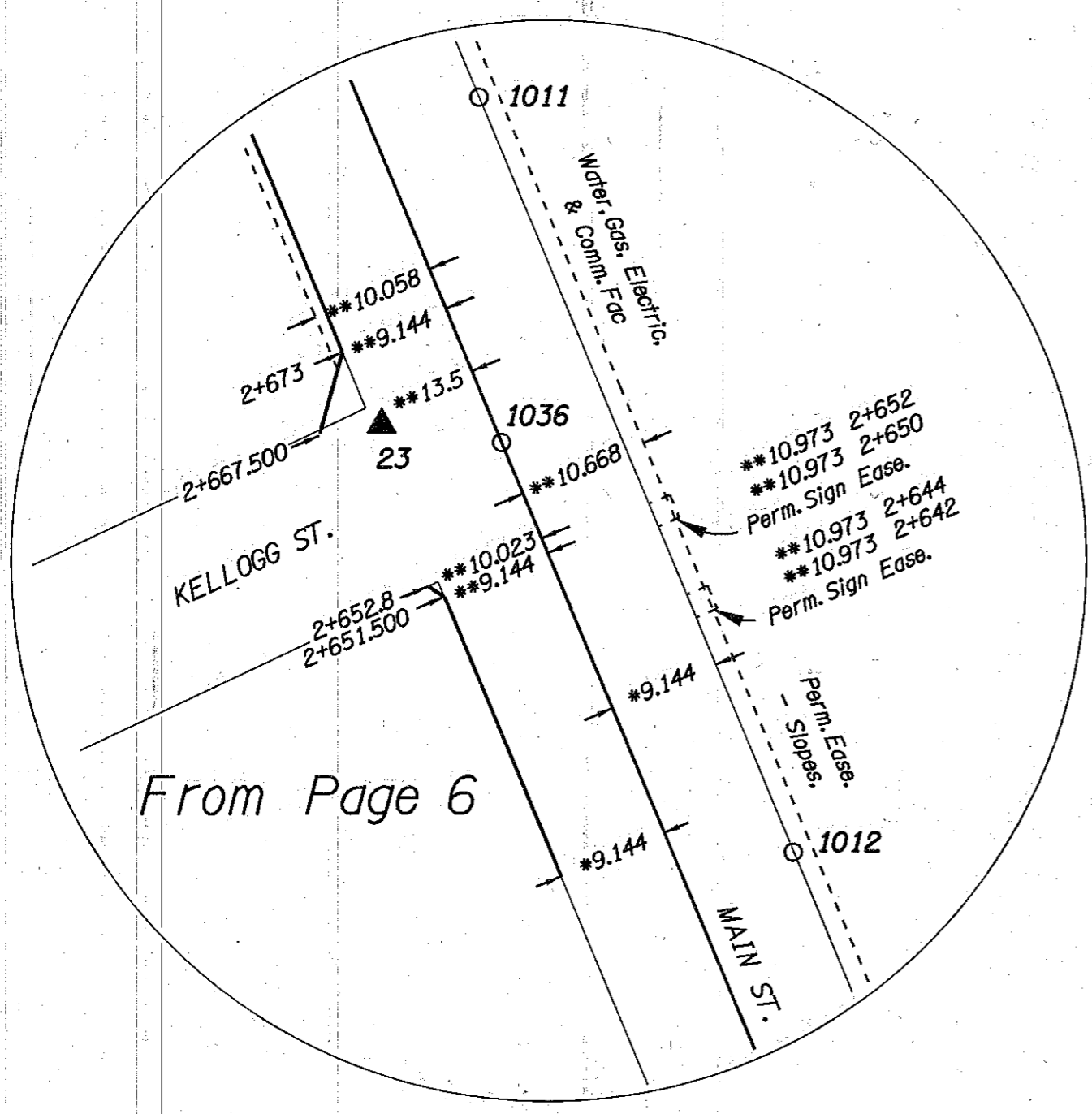
CADD FILE NAME: 7006RWPT.2D

LEGEND	
()	RECORD DATA
○	FOUND MONUMENT NOTED IN LIST
△	FOUND MONUMENT USED AS NETWORK POINT
▲	SET NETWORK POINT
—	RESOLVED RIGHT-OF-WAY
—	ADDITIONAL R/W PURCHASE
- - -	RESOLVED EXISTING CENTERLINE
—	NEW R/W CENTERLINE
- - -	PERMANENT EASEMENT AS NOTED
—	SECTION LINE

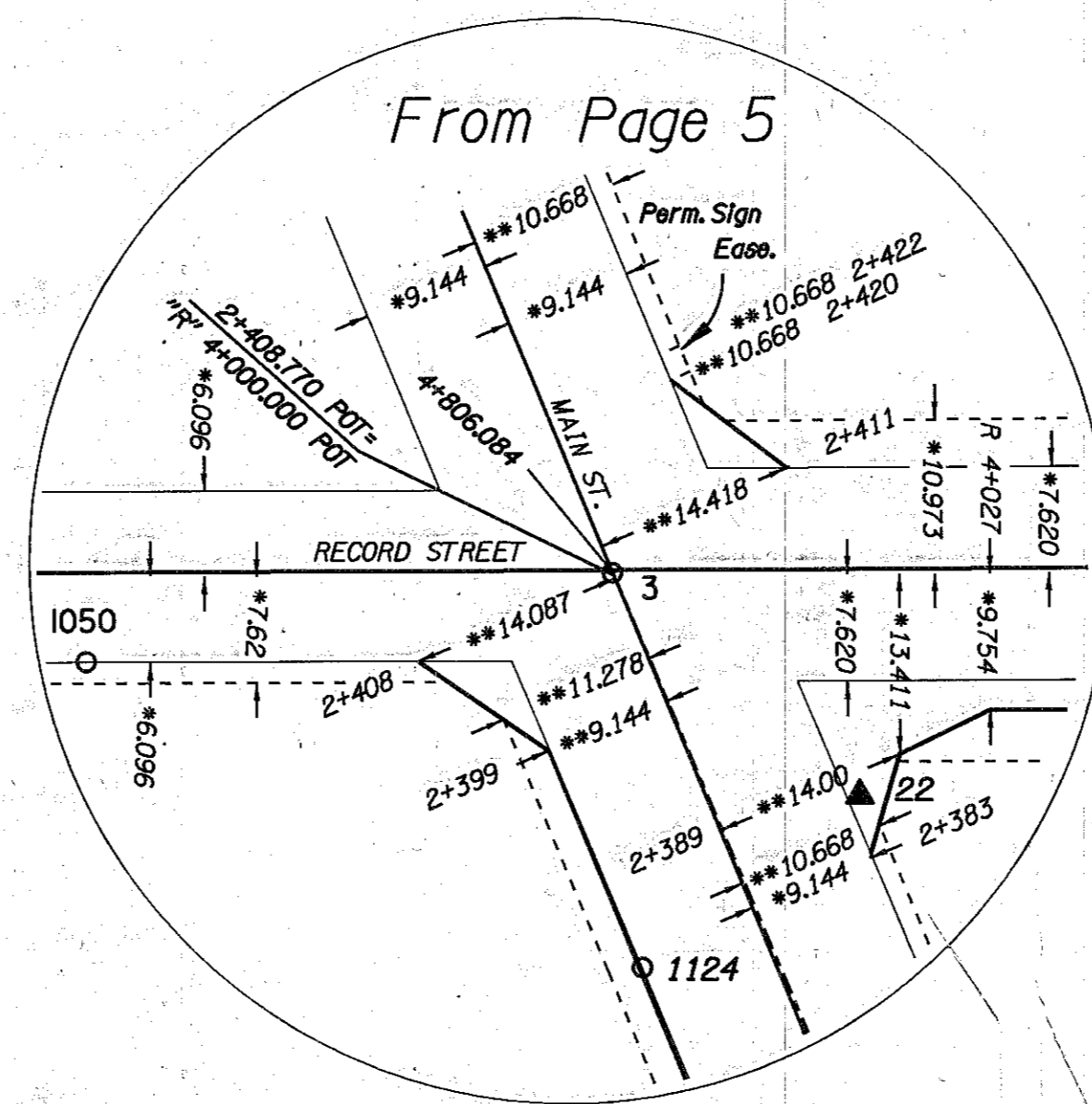
* Distance From Resolved Centerline
 ** Distance From New R/W Centerline



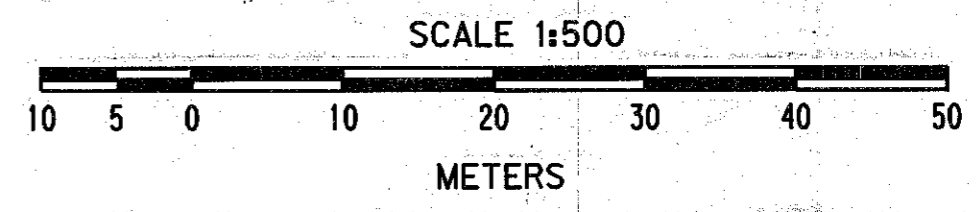
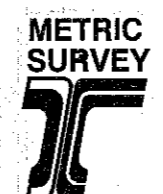
From Page 7



From Page 6



From Page 5



TO CONVERT METERS TO S. I. FEET DIVIDE BY 0.3048

REGISTERED
 PROFESSIONAL
 LAND SURVEYOR
Robert E. Butler
 OREGON
 JULY 26, 1995
 ROBERT E. BUTLER
 2733

EXPIRES 12-31-99
 OREGON DEPARTMENT OF TRANSPORTATION
 3012 ISLAND AVENUE
 LA GRANDE, OREGON

THE OREGON DEPARTMENT OF TRANSPORTATION
 AMENDED HORIZONTAL CONTROL,
 RECOVERY AND RETRACEMENT MAP
 BAKER - COPPERFIELD HIGHWAY, HALFWAY SECTION
 BAKER COUNTY
 April 5, 1999 to April 8, 1999 For ODOT, Region 5
 3012 Island Ave., La Grande, OR 97850
 Scale: 1 mm = 0.5 m Page 5B of 8

FILED May 18, 1999
 BAKER COUNTY SURVEYOR
 SURVEY NO. 8-46-85