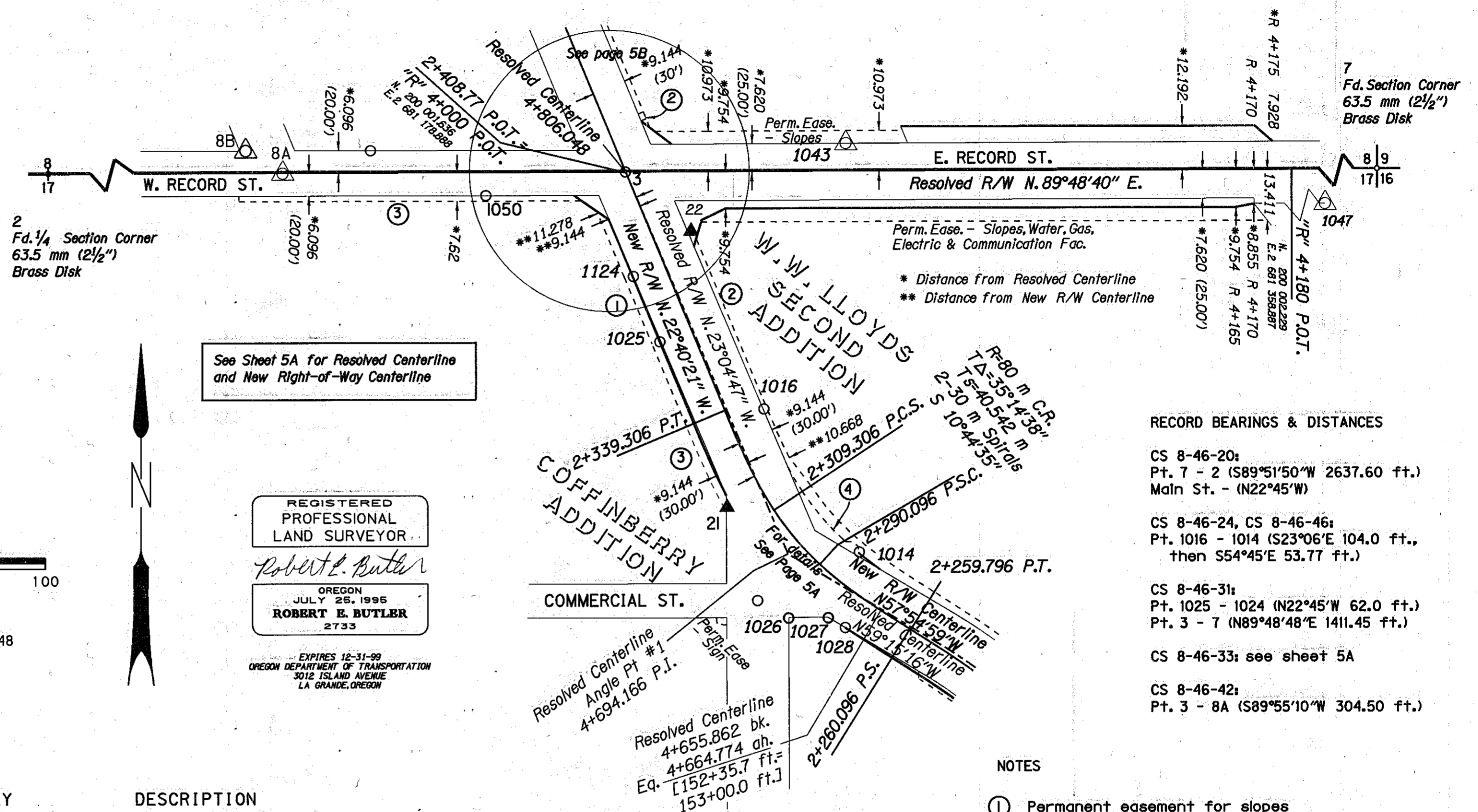


SITUATED IN THE NW 1/4 AND THE NE 1/4 OF S 17; AND THE SW 1/4 AND THE SE 1/4 OF S 8; T 8 S, R 46 E, WM; BAKER COUNTY, OREGON

CADD FILE NAME: 7006RWPT.2D

LEGEND	
( )	RECORD DATA FROM CS 8-46-20, CS 8-46-24, CS 8-46-31 OR CS 8-46-42
○	FOUND MONUMENT NOTED IN LIST
△	FOUND MONUMENT USED AS NETWORK POINT
▲	SET NETWORK POINT
—	RESOLVED RIGHT-OF-WAY
—	ADDITIONAL R/W PURCHASE
- - -	RESOLVED EXISTING CENTERLINE
—	NEW R/W CENTERLINE
- - -	PERMANENT EASEMENT AS NOTED
—	SECTION LINE



RECORD BEARINGS & DISTANCES

- CS 8-46-20:  
Pt. 7 - 2 (S89°51'50"W 2637.60 ft.)  
Main St. - (N22°45'W)
- CS 8-46-24, CS 8-46-46:  
Pt. 1016 - 1014 (S23°06'E 104.0 ft.,  
then S54°45'E 53.77 ft.)
- CS 8-46-31:  
Pt. 1025 - 1024 (N22°45'W 62.0 ft.)  
Pt. 3 - 7 (N89°48'48"E 1411.45 ft.)
- CS 8-46-33: see sheet 5A
- CS 8-46-42:  
Pt. 3 - 8A (S89°55'10"W 304.50 ft.)

NOTES

- ① Permanent easement for slopes
- ② Permanent sign easement
- ③ Permanent easement for slopes, water, gas, electric, and comm. facilities
- ④ Permanent easement for Right-of-Way purposes

PT	NORTHING	EASTING	SURVEY	DESCRIPTION
0002	200 001.132	2 680 805.348	C.S. 8-46-21	Fd. 64 mm (2 1/2") brass cap
0003	200 001.820	2 681 178.811		Fd. 19 mm (3/4") iron rod
004A	199 816.421	2 681 214.684	C.S. 8-46-33	Fd. 16 mm (5/8") iron rod in 100 mm (4") steel casing
0007	200 003.055	2 681 609.299	C.S. 8-46-21	Fd. 64 mm (2 1/2") brass cap
0021	199 911.467	2 681 206.262		Set 16 mm x 760 mm iron rod with ODOT aluminum cap
0022	199 985.880	2 681 196.534		Set 16 mm x 760 mm iron rod with ODOT aluminum cap
008A	200 001.522	2 681 086.102	C.S. 8-46-42	Fd. 16 mm (5/8") iron rod
008B	200 007.595	2 681 076.072	C.S. 8-46-35	Fd. 25 mm (1") iron pipe
1014	199 899.381	2 681 241.974	C.S. 8-46-24	Fd. 9 mm (3/8") lead plug set in conc., reset 16 mm x 760 mm iron rod w/ODOT alum. cap
1015	199 886.384	2 681 214.493	C.S. 8-46-33	Fd. 16 mm (5/8") iron rod in 100 mm (4") steel casing, reset 16 mm x 760 mm iron rod w/ODOT alum. cap
1016	199 937.960	2 681 216.229	C.S. 8-46-24	Fd. 19 mm (3/4") iron pin, reset 16 mm x 760 mm iron rod w/ODOT alum. cap
1024	199 973.702	2 681 180.942	C.S. 8-46-31	Fd. lead plug in walk, reset 16 mm x 760 mm iron rod w/ODOT alum. cap
1025	199 956.106	2 681 188.101	C.S. 8-46-31	Fd. PK nail in walk, reset 16 mm x 760 mm iron rod w/ODOT alum cap
1026	199 881.677	2 681 222.883	C.S. 8-46-33	Fd. x in concrete, reset 16 mm x 760 mm iron rod w/ODOT alum. cap
1027	199 881.681	2 681 233.558	C.S. 8-46-33	Fd. x in concrete, reset 16 mm x 760 mm iron rod w/ODOT alum. cap
1028	199 879.043	2 681 238.172	C.S. 8-46-33	Fd. x in concrete, reset 16 mm x 760 mm iron rod w/ODOT alum. cap
1047	199 993.255	2 681 414.980	C.S. 8-46-39	Fd. 16 mm (5/8") iron rod w/plastic cap
1050	199 995.519	2 681 141.051	C.S. 8-46-74	Fd. 16 mm (5/8") iron rod with plastic cap
1051	200 007.641	2 681 109.864		Fd. 16 mm (5/8") iron rod with plastic cap

THE OREGON DEPARTMENT OF TRANSPORTATION  
 AMENDED HORIZONTAL CONTROL,  
 RECOVERY AND RETRACEMENT MAP  
 BAKER - COPPERFIELD HIGHWAY, HALFWAY SECTION  
 BAKER COUNTY  
 April 5, 1998 to April 8, 1999 For ODOT, Region 5  
 3012 Island Ave., La Grande, OR 97850  
 Scale: 1 mm = 1.0 m Page 5 of 8