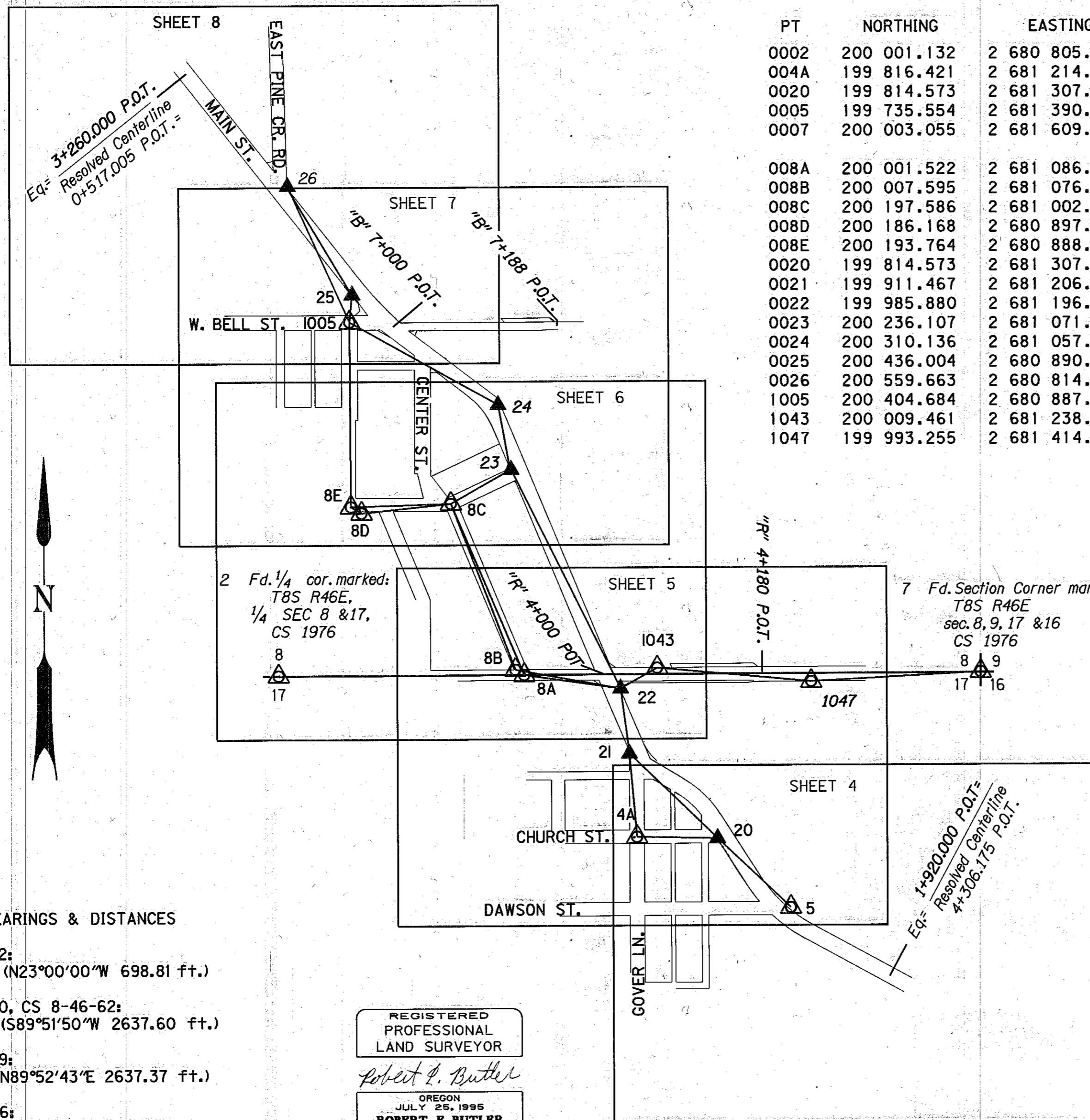


SITUATED IN THE NW 1/4 AND THE NE 1/4 OF S 17; AND THE SW 1/4 AND THE SE 1/4 OF S 8; T 8 S, R 46 E, WM; BAKER COUNTY, OREGON



NETWORK POINT COORDINATE LIST

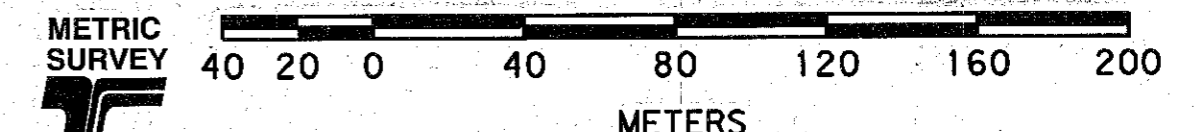
PT	NORTHING	EASTING	DESCRIPTION
0002	200 001.132	2 680 805.348	Fd. 64 mm (2 1/2") brass disc; 1/4 cor of sec. 8 & 16
004A	199 816.421	2 681 214.684	Fd. 16 mm (5/8") iron rod in 100 mm (4") steel casing
0020	199 814.573	2 681 307.011	Set 16 mm x 760 mm iron rod w/ODOT alum. cap
0005	199 735.554	2 681 390.830	Fd. 16 mm (5/8") rebar w/ODOT alum cap
0007	200 003.055	2 681 609.299	Fd. 64 mm (2 1/2") brass disc; cor common to sec 8, 9, 16 & 17
008A	200 001.522	2 681 086.102	Fd. 16 mm (5/8") iron rod in 100 mm (4") steel casing
008B	200 007.595	2 681 076.072	Fd. 25 mm (1") iron pipe
008C	200 197.586	2 681 002.868	Fd. 16 mm (5/8") iron rod in 100 mm (4") steel casing
008D	200 186.168	2 680 897.316	Fd. 16 mm (5/8") iron rod w/plastic cap
008E	200 193.764	2 680 888.126	Fd. 16 mm (5/8") iron rod in 100 mm (4") steel casing
0020	199 814.573	2 681 307.011	Set 16 mm x 760 mm iron rod w/ODOT alum. cap
0021	199 911.467	2 681 206.262	Set 16 mm x 760 mm iron rod w/ODOT alum. cap
0022	199 985.880	2 681 196.534	Set 16 mm x 760 mm iron rod w/ODOT alum. cap
0023	200 236.107	2 681 071.793	Set 16 mm x 760 mm iron rod w/ODOT alum. cap
0024	200 310.136	2 681 057.051	Set 16 mm x 760 mm iron rod w/ODOT alum. cap
0025	200 436.004	2 680 890.193	Set 16 mm x 760 mm iron rod w/ODOT alum. cap
0026	200 559.663	2 680 814.844	Set 16 mm x 760 mm iron rod w/ODOT alum. cap
1005	200 404.684	2 680 887.161	Fd. 16 mm (5/8") iron rod in 100 mm (4") steel casing
1043	200 009.461	2 681 238.356	Fd. 16 mm (5/8") iron rod w/plastic cap
1047	199 993.255	2 681 414.980	Fd. 16 mm (5/8") iron rod w/plastic cap

CADD FILE NAME: 7006RWPT.2D

LEGEND

- FOUND MONUMENT USED AS NETWORK POINT
- SET NETWORK POINT
- RIGHT-OF-WAY
- PERMANENT NETWORK LINE
- SECTION LINE

SCALE 1:2000



TO CONVERT METERS TO S. I. FEET DIVIDE BY 0.3048

RECORD BEARINGS & DISTANCES

- CS 8-46-42:
Pt. 8A-8C (N23°00'00"W 698.81 ft.)
- CS 8-46-20, CS 8-46-62:
Pt. 7 - 2 (S89°51'50"W 2637.60 ft.)
- CS 8-46-59:
Pt. 2 - 7 (N89°52'43"E 2637.37 ft.)
- CS 8-46-66:
Pt. 2 - 7 (N89°52'43"E 2637.52 ft.)
- CS 8-46-72:
Pt. 8E - 8C (N89°50'55"E 351.61 ft.)

REGISTERED
PROFESSIONAL
LAND SURVEYOR
Robert E. Butler
ROBERT E. BUTLER
2733

EXPIRES 12-31-99
OREGON DEPARTMENT OF TRANSPORTATION
3012 ISLAND AVENUE
LA GRANDE, OREGON

THE OREGON DEPARTMENT OF TRANSPORTATION

AMENDED HORIZONTAL CONTROL,
RECOVERY AND RETRACEMENT MAP

BAKER - COPPERFIELD HIGHWAY, HALFWAY SECTION

BAKER COUNTY

April 5, 1999 to April 8, 1999 For ODOT, Region 5

3012 Island Ave., La Grande, OR 97850

Scale: 1 mm = 1.0 m

Page 3 of 8

FILED *MAY 18, 1999*
BAKER COUNTY SURVEYOR
SURVEY NO. *8-46-81*