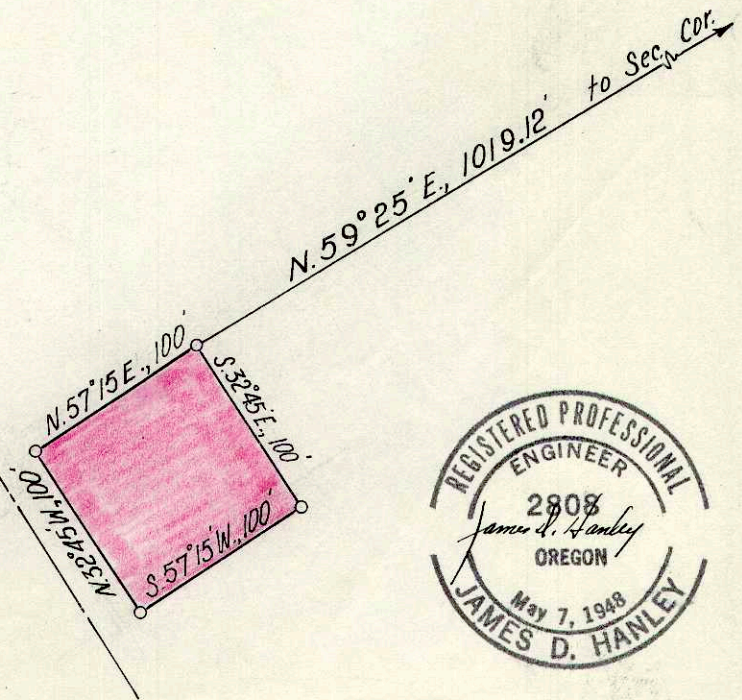


DESCRIPTION

Beginning at a point which bears S. 59°25' E., 1019.12 ft. from the corner common to Sections 8, 9, 16 and 17, T. 8 S., R. 46 E., W. M.; Thence S. 32°45' E., 100 ft.; thence S. 57°15' W., 100 ft.; thence N. 32°45' W., 100 ft.; thence N. 57°15' E., 100 ft. to the point of beginning.



SURVEY
IN
HALFWAY, OREGON
September 16, 1951 Scale 1"=100'



FILED MARCH 27, 1997
BAKER COUNTY SURVEYOR
SURVEY NO. 8-46-73

