

HALFWAY SECTION
CONTROL TRAVERSE

HWY'S #413, #414, and 12 SPUR BAKER COUNTY
KEY I.D. NO. 07006
DATE OF SURVEY: APRIL, 1995

SHEET NO.
1 OF 1

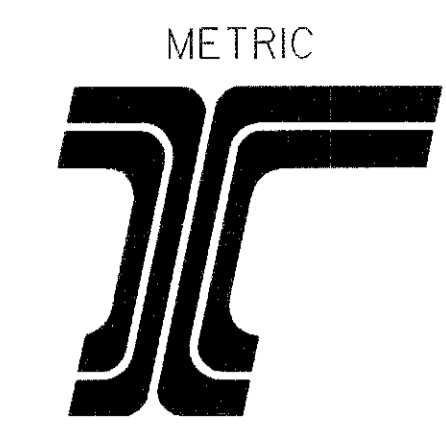
SURVEY NARRATIVE
The purpose of this survey was to establish horizontal control and to tie existing monuments along the "Halfway Section" project. This project covers "Main Street" from the just south of Dawson Street north to about the high school near E. Pine Creek road. This project is located in Twp. 8S., R. 46 E., W.M. sections 8 and 17.

The traverse began by occupying the quarter corner between sections 8 and 17 then backsighting the section corner common to sections 7, 8, 17, and 18. The record bearing between these two monuments, as recorded in a survey filed 06-23-76 as Baker County survey number 8-46-20, was used for the "Basis of Bearings". The traverse closed back on this same line.

Assumed coordinates were used on this project. The traverse was adjusted using the compass rule method. Distances are in meters.

Traverse points set during this survey were not set on Right-of-Way Lines, and do not represent Right-of-Way Lines or property lines. They are intended solely for O.D.O.T. use in support of any proposed or future transportation related project.

The field work was completed by Richard A. Baldwin L.S.I.T., the data processed and adjusted by J. David Brinton P.L.S., all under my direct supervision.



LEGEND

- △ TRAVERSE POINT
 - FOUND MONUMENT
 - EDGE OF PAVEMENT
- NOTE: SEE COORDINATE TABLES FOR MONUMENT DESCRIPTIONS.

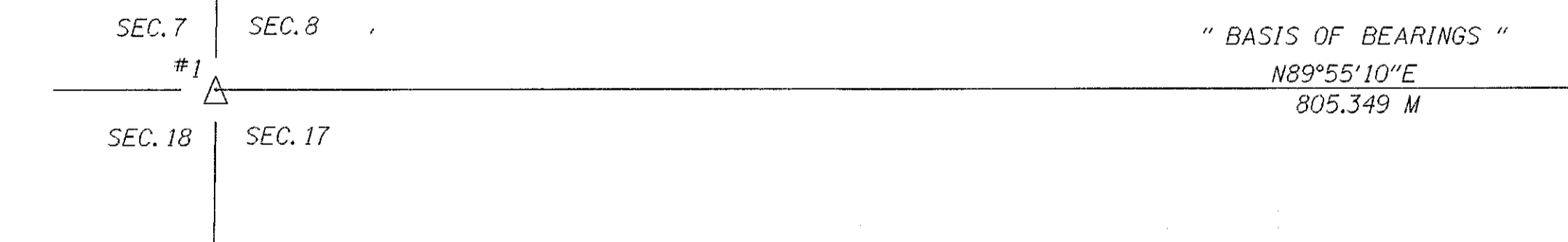
REGISTERED PROFESSIONAL LAND SURVEYOR
Richard W. Thompson
OREGON
JULY 21, 1992
RICHARD W. THOMPSON
2565

SCALE
1:2000

COORDINATE TABLE FOR FOUND MONUMENTS

POINT NUMBER	NORTHING	EASTING	DESCRIPTION	SURVEY NUMBER
#1000	200,805.845	2,680,803.645	Fnd. 2" Alum. Cap Stamped T8S R46E C1/4 S 8 1994 PLS 699	8-46-59
#1001	* See note below			
#1002	200,574.178	2,680,800.425	Fnd. PK Nail in Asphalt (Unknown origin)	Unknown
#1003	* See note below			
#1004	200,414.306	2,680,904.451	Fnd. 3/8" Iron Rod With Plastic Cap	8-46-48MP
#1005	200,404.689	2,680,887.160	Fnd. 3/8" Iron Rod in a 4" Steel Caseing	8-46-48MP
#1006	200,348.754	2,681,015.814	Fnd. 3/8" Iron Rod With 1 1/4" Plastic Cap Stamped Hanley Eng PLS 1206	8-46-47
#1007	200,317.600	2,681,056.798	Fnd. 3/8" Iron Rod With 1 1/4" Plastic Cap Stamped Hanley Eng PLS 1206	8-46-47
#1008	200,313.875	2,681,058.357	Fnd. 3/8" Iron Rod With 1 1/4" Plastic Cap Stamped Hanley Eng PLS 1206	8-46-47
#1009	200,311.824	2,681,049.308	Fnd. 3/4" Iron Rod Flush With Pavement	8-46-47
#1010	200,287.606	2,681,069.358	Fnd. 3/8" Iron Rod With 1 1/4" Plastic Cap Stamped Hanley Eng PLS 1206	8-46-47
#1011	200,262.629	2,681,079.774	Fnd. 3/8" Iron Rod With 1 1/4" Plastic Cap Stamped Hanley Eng PLS 1206	8-46-62MP
#1012	200,201.350	2,681,105.320	Fnd. 1" I.D. Pipe	Un-recorded
#1013	200,179.859	2,681,114.319	Fnd. 3/4" Iron Rod	Un-recorded
#1014	199,899.381	2,681,241.974	Fnd. 3/8" Lead Plug	8-46-24
#1015	199,886.384	2,681,214.493	Fnd. 3/8" Iron Rod Set In a 4" Casing	8-46-33
#1016	199,937.960	2,681,216.229	Fnd. 3/4" Iron Rod Set In Pavement	8-46-24
#1017	199,734.134	2,681,214.945	Fnd. 20 Penny Nail Set in a 4" Casing	8-46-61
#1018	199,734.005	2,681,125.756	Fnd. 3/8" Iron Rod Set In a 4" Casing	8-46-61
#1019	200,499.129	2,680,863.832	Fnd. 3/8" Iron Rod With 1 1/4" Plastic Cap Marked D.L.T. & Assoc. L.S. 1362	8-46-66
#1020	200,473.876	2,680,884.320	Fnd. 3/8" Iron Rod With 1 1/4" Plastic Cap Marked D.L.T. & Assoc. L.S. 1362	8-46-66
#1021	200,451.508	2,680,902.445	Fnd. 3/8" Iron Rod With 1 1/4" Plastic Cap Marked D.L.T. & Assoc. L.S. 1362	8-46-66
#1022	200,394.844	2,680,957.188	Fnd. 3/8" Iron Rod With 1 1/4" Plastic Cap Stamped Hanley Eng PLS 1206	8-46-64
#1023	200,374.274	2,680,982.205	Fnd. 3/8" Iron Rod With 1 1/4" Plastic Cap Stamped Hanley Eng PLS 1206	8-46-64
#1024	199,973.702	2,681,180.942	Fnd. lead plug in sidewalk	8-46-31
#1025	199,956.106	2,681,188.101	Fnd. PK Nail in sidewalk	8-46-31
#1026	199,881.677	2,681,222.884	Fnd. chiseled X in concrete	8-46-33
#1027	199,881.681	2,681,233.558	Fnd. chiseled X in concrete	8-46-33
#1028	199,879.043	2,681,238.172	Fnd. chiseled X in concrete	8-46-33
#1029	200,073.389	2,681,139.040	Fnd. 3/8" Iron Rod With 1 1/4" Plastic Cap Stamped Hanley Eng PLS 1206	8-46-42
#1030	200,087.435	2,681,133.153	Fnd. 3/8" Iron Rod With 1 1/4" Plastic Cap Stamped Hanley Eng PLS 1206	8-46-42
#1031	200,119.377	2,681,138.006	Fnd. lead plug in sidewalk (Origin unknown)	Unknown
#1032	200,141.429	2,681,130.447	Fnd. bolt (See note below) **	Unknown
#1033	200,121.408	2,681,138.630	Fnd. PK Nail in sidewalk (With nail head broken off)	8-46-60
#1034	200,121.270	2,681,138.600	Fnd. lead plug in sidewalk	8-46-60
#1035	200,097.171	2,681,148.508	Fnd. lead plug in sidewalk (Origin unknown)	Unknown
#1036	200,234.627	2,681,081.570	Fnd. 3/8" Iron Rod Set In a 3" Caseing	8-46-57

* Pins have been removed or destroyed by the surveyor and the survey abandoned at this time.
** According to survey number 8-46-60 there should be a P.K. nail in the sidewalk very near this location. The original nail has probably been destroyed because there is a new section of sidewalk here now. There is also a large nail with ribbon very close to this location that was not tied because Jim Hanley believes that it is probably one of his traverse points.



COORDINATE TABLE FOR TRAVERSE POINTS

POINT NUMBER	NORTHING	EASTING	DESCRIPTION	SURVEY NUMBER
#1	200,000.000	2,680,000.000	Fnd. 2 1/2" Brass Disc. Stamped T8S R46E Sec. 7, 8, 17 & 18. CS 1976	8-46-12
#2	200,001.132	2,680,805.348	Fnd. 2 1/2" Brass Disc. Stamped T8S R46E 1/4 Sec. 8 & 17 CS 1976	8-46-12
#3	200,001.820	2,681,178.811	Fnd. 3/4" Iron Rod	8-46-42
#4	199,898.906	2,681,218.100	Set PK Nail	
#5	199,735.554	2,681,390.830	Set 3/8" x 30" Rebar With 1 1/2" ODOT Alum. Cap Stamped TRAV PT 5	
#6	199,786.841	2,681,599.432	Set 3/8" x 30" Rebar With 1 1/2" ODOT Alum. Cap Stamped TRAV PT 6	
#7	200,003.055	2,681,609.299	Fnd. 2 1/2" Brass Disc. Stamped T8S R46E Sec. 8, 9, 16 & 17	8-46-12
#8	199,994.060	2,681,192.260	Fnd. 3/8" Iron Rod	8-46-24
#9	200,326.927	2,681,035.803	Set 3/8" x 30" Rebar With 1 1/2" ODOT Alum. Cap Stamped TRAV PT 9	
#10	200,417.893	2,680,906.164	Fnd. 3/8" Iron Rod With 1 1/4" Plastic Cap Stamped Hanley Eng PLS 1206	8-46-48MP
#11	200,582.142	2,680,799.134	Fnd. 3/8" Iron Rod With 1 1/4" Plastic Cap Stamped Hanley Eng PLS 1206	*
#12	200,398.845	2,680,579.624	Set 3/8" x 30" Rebar With 1 1/2" ODOT Alum. Cap Stamped TRAV PT 12	

* Pins have been removed or destroyed by the surveyor and the survey abandoned at this time.

