

KELLOGG

ST

LEGEND

- Found city monument
- Set 5/8" x 30" rebar marked "HANLEY ENGRG PLS 1206"

NARRATIVE:

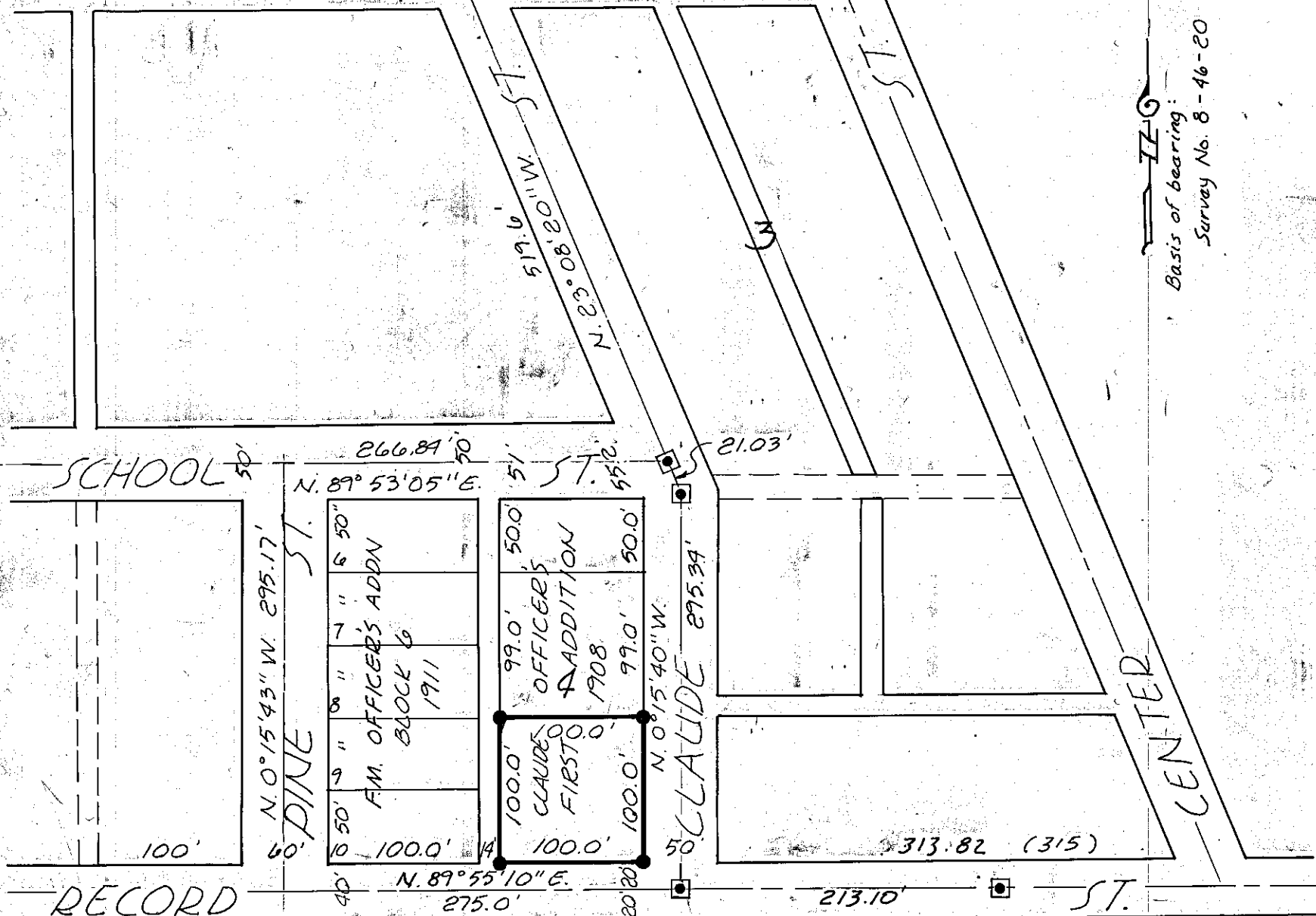
Street monuments recovered and standard survey procedures employed to establish property corners as shown

MAP of SURVEY

The South 100 Ft. of Block 4
Claude Officers First Addition,
Halfway, Oregon.
Surveyed for Wm. A. Bennett
July 24, 1987 Scale: 1"=100'

REFERENCES

Survey No. 8-46-20, 21
8-46-25



REGISTERED
PROFESSIONAL
LAND SURVEYOR

James D. Hanley

OREGON
SEPTEMBER 23, 1977
JAMES D. HANLEY
1206

FILED 8-31-87
BAKER COUNTY SURVEYOR
SURVEY NO. 8-46-40