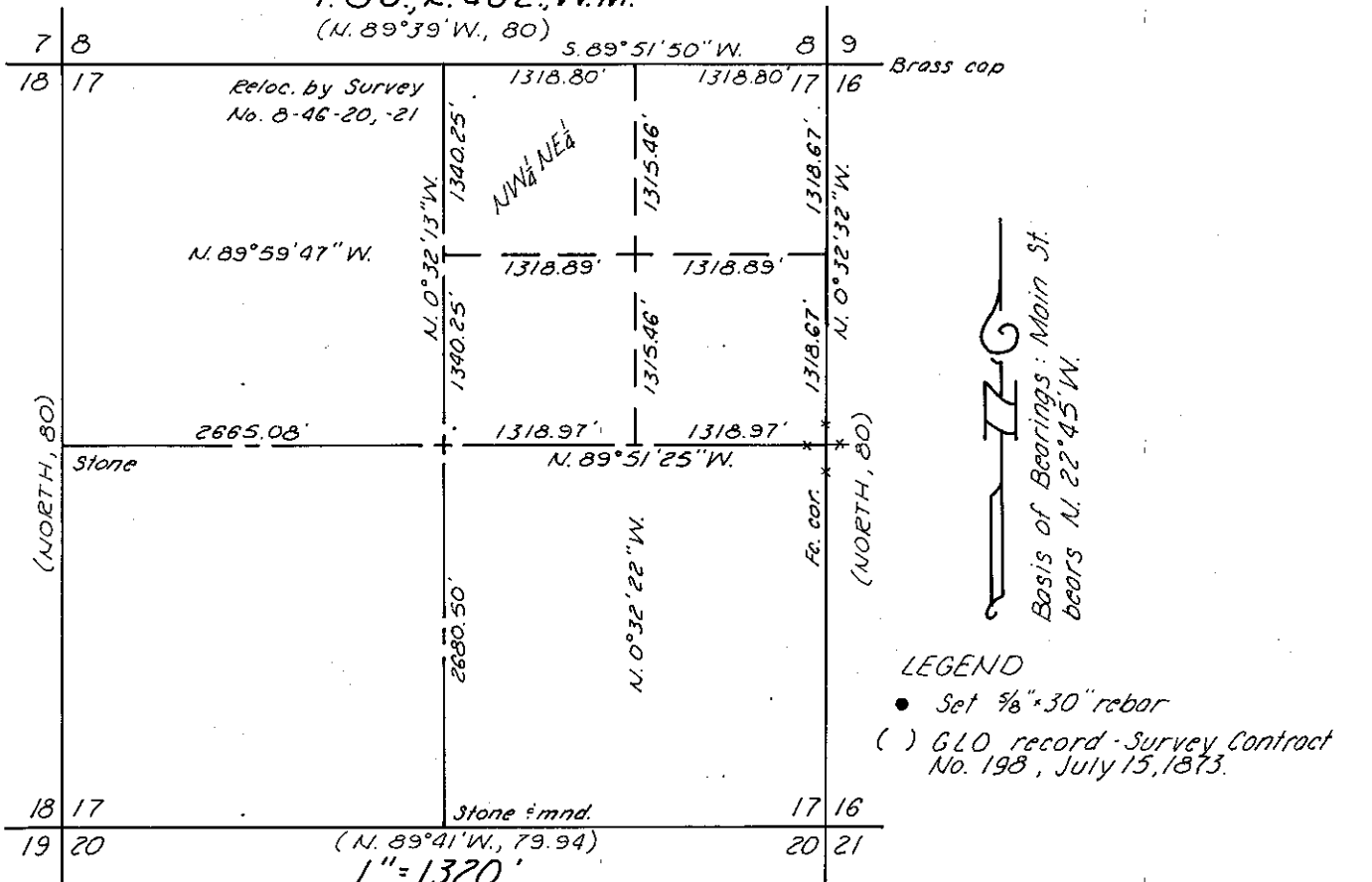


T. 8 S., R. 46 E., W. 1 M.

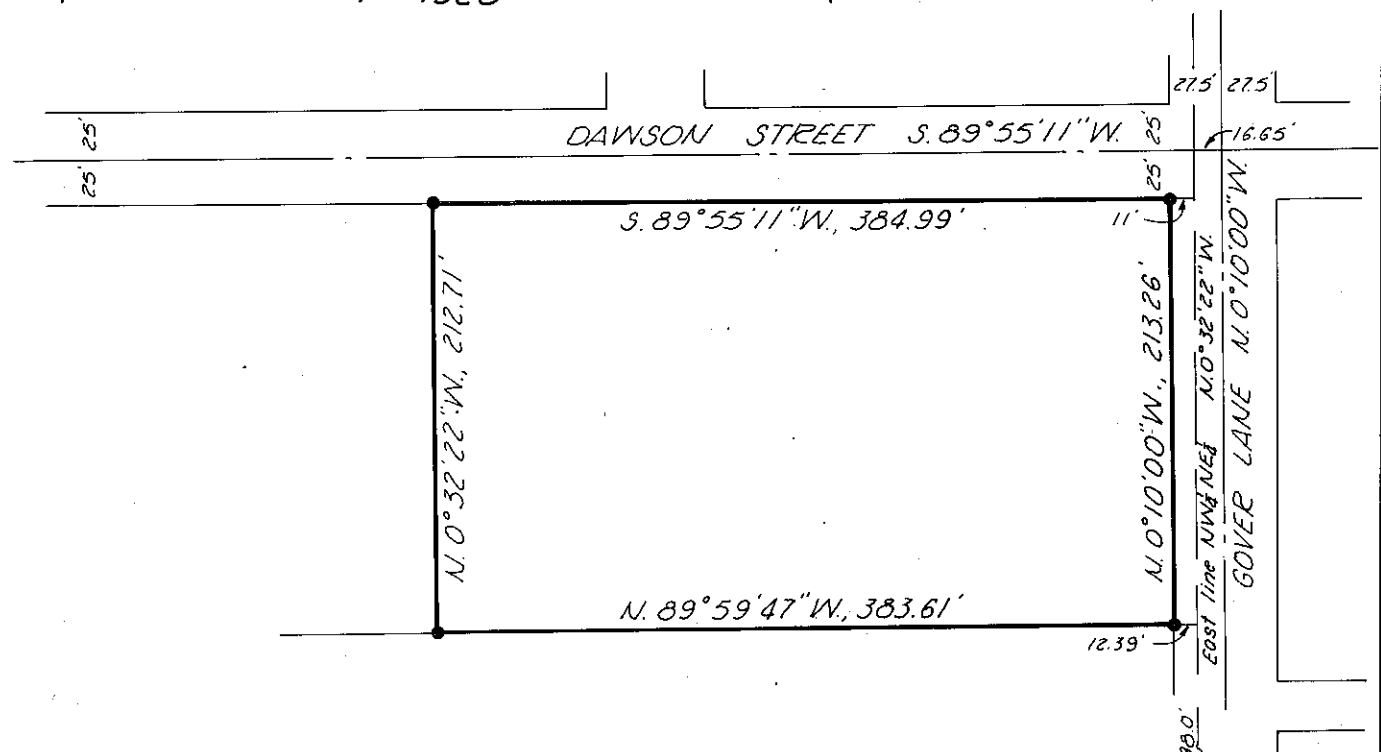
(N. 89° 39' W., 80)



Basis of Bearings: Main St. bears N. 22° 45' W.

LEGEND

- Set 3/8" x 30" rebar
- () GLO record - Survey Contract No. 198, July 15, 1873.



NARRATIVE BY ATTACHMENT

SE cor. NW 1/4 NE 1/4
N. 89° 59' 47" W.

MAP OF SURVEY

IN THE NW 1/4 NE 1/4 SECTION 17, T. 8 S., R. 46 E., W. 1 M

Surveyed Dec. 22, 1980

Scale 1" = 100'

FOR JOHN & JULIE REED

REGISTERED
PROFESSIONAL
LAND SURVEYOR

James D. Hanley

OREGON
SEPTEMBER 23, 1977
JAMES D. HANLEY
1206

FILED Dec. 23, 1980

BAKER COUNTY SURVEYOR

SURVEY NO. 8-46-29