
 BASIS OF BEARINGS:
 The plotted bearing of
 MAIN ST. in HALFWAY,
 ORE. is N. 22° 45' W.

642.77

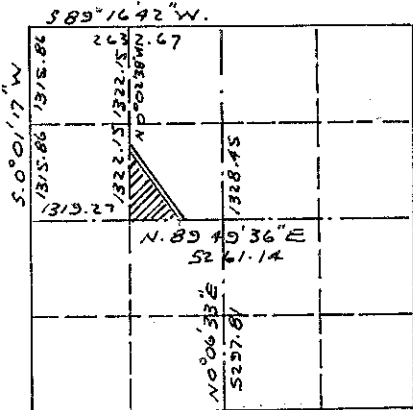
N. 89° 49' 36" E,

SOUTH LINE OF SE 1/4 NW 1/4

SW corner of
the SE 1/4 NW 1/4

• Indicates set 5/8" rebar corner monument

SEC. 8, T. 8 S., R. 46 E., W. M.



VICINITY MAP

MAP OF SURVEY
 2 PARCELS IN THE SE 1/4 NW 1/4
 SECTION 8, T. 8 S., R. 46 E., W. M.

Surveyed Feb. 20 and April 11, 1979
 For L.D.S. Church and Annie J. Gaver

Scale 1" = 100'

REGISTERED
 PROFESSIONAL
 LAND SURVEYOR

James D. Hanley
 OREGON
 SEPTEMBER 24, 1927
 JAMES D. HANLEY
 1206

FILED April 12, 1979

BAKER COUNTY SURVEYOR
 SURVEY NO. 8-46-26