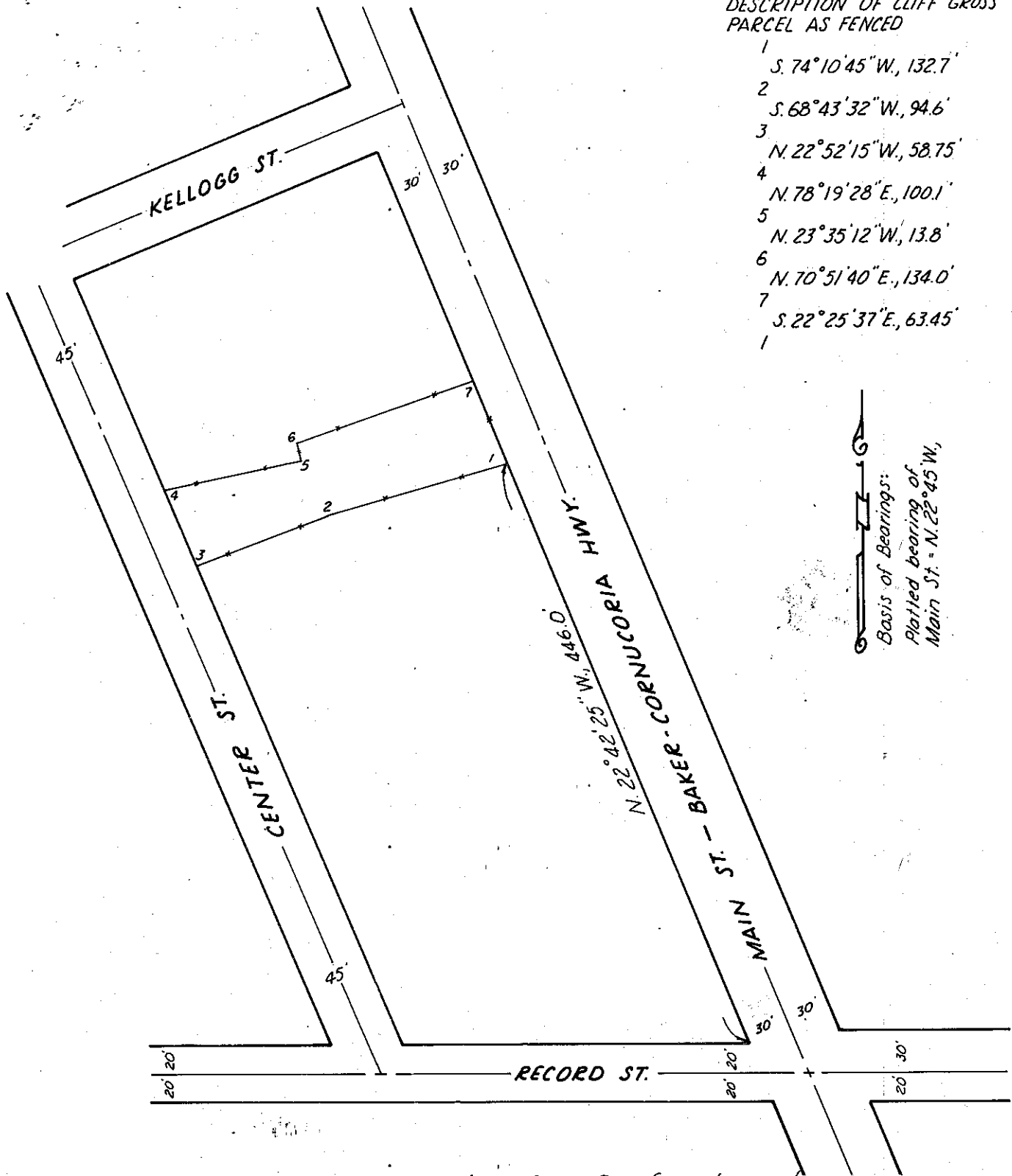


DESCRIPTION OF CLIFF GROSS
PARCEL AS FENCED

- 1 S. 74° 10' 45" W., 132.7'
- 2 S. 68° 43' 32" W., 94.6'
- 3 N. 22° 52' 15" W., 58.75'
- 4 N. 78° 19' 28" E., 100.1'
- 5 N. 23° 35' 12" W., 13.8'
- 6 N. 70° 51' 40" E., 134.0'
- 7 S. 22° 25' 37" E., 63.45'



See Map 8-46-20 & Narrative 8-46-21 for description
of found corners & relocation of Record Street centerline.

MAP OF SURVEY

A PARCEL IN CLAUDE OFFICER'S
FIRST ADDITION TO HALFWAY, OREGON

Surveyed Aug. 3, 1976

Scale 1"=100'

For Cliff Gross

FILED AUG. 16, 1976
BAKER COUNTY SURVEYOR
SURVEY NO. 8-46-22

