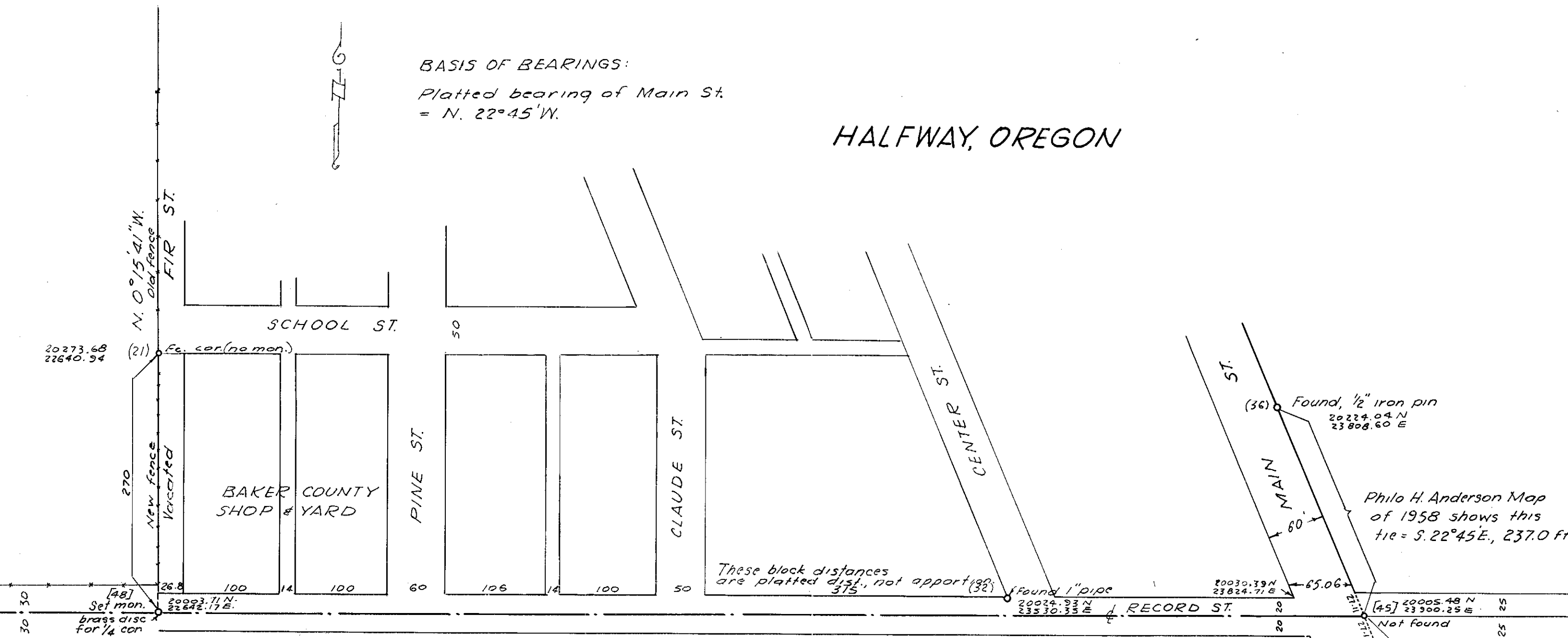


BASIS OF BEARINGS:
 Platted bearing of Main St.
 = N. 22° 45' W.

HALFWAY, OREGON

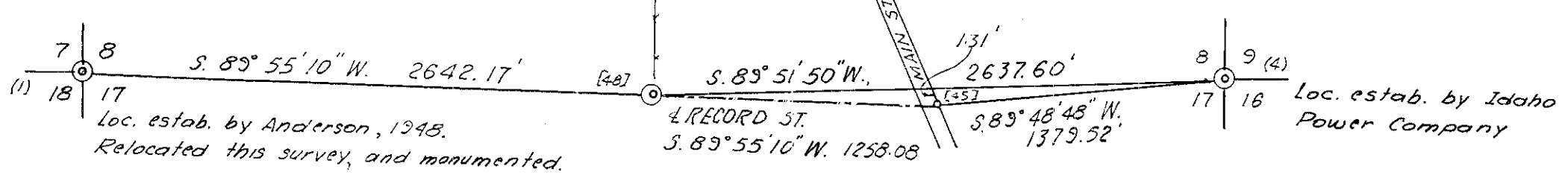


These block distances are platted dist., not apportioned.

Philo H. Anderson Map of 1958 shows this tie = S. 22° 45' E., 237.0 ft

Record Street and Main Street relocated according to Philo H. Anderson map of survey of 1948, co. surveyor file No. 8-46-6. The South 1/4 cor. of Sec. 8, T. 8 S., R. 46 E., W. M. lies on this reestablished line. Coded numbers (1), [48], etc., refer to calculator designations and field survey notes and the relative coordinates are listed alongside.

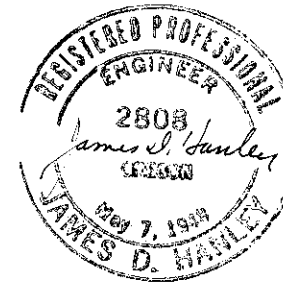
Scale 1"=100'



DEPENDANT RESURVEY FOR REESTABLISHING SOUTH 1/4 CORNER SEC. 8, T. 8 S., R. 46 E., W. M.

FOR BAKER COUNTY, OREGON
 SURVEYED JUNE 8 & 18, 1976
 SCALES AS SHOWN

FILED 6-23-76
 BAKER COUNTY SURVEYOR
 SURVEY NO. 8-46-20



The SW cor. of Sec. 8 (1) 20,000 N, 20,000 E is a brass disc set in asphalt highway, this survey.