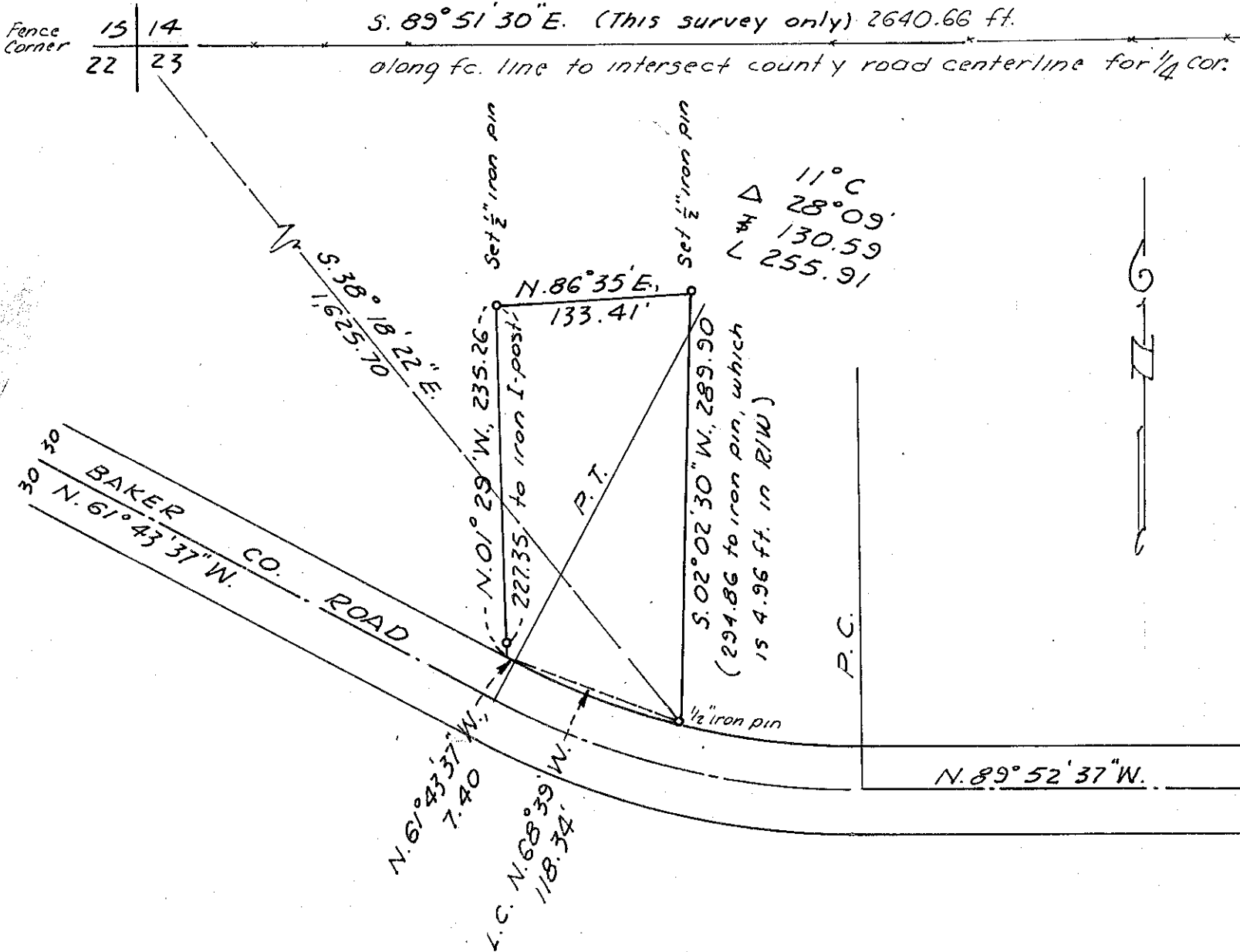


T. 8 S., R. 46 E., W. 1 M.

BASIS OF BEARINGS:

S. 89° 51' 30" E. (This survey only) 2640.66 ft.

along fc. line to intersect county road centerline for 1/4 cor.



MAP OF SURVEY

PARCEL IN THE NW 1/4 NW 1/4 OF SEC. 23,
T. 8 S., R. 46 E., W. 1 M.

Surveyed April 22, 1974

Scale 1" = 100'

For Charles R. Hilderbrand

FILED May 13, 1974
BAKER COUNTY SURVEYOR
SURVEY NO. 8-46-14

