

PUBLIC LAND SURVEY CORNER RECORD
MALHEUR COUNTY, OREGON

Township 8 S, Range 46 E, Section 24, Corner S 1/4

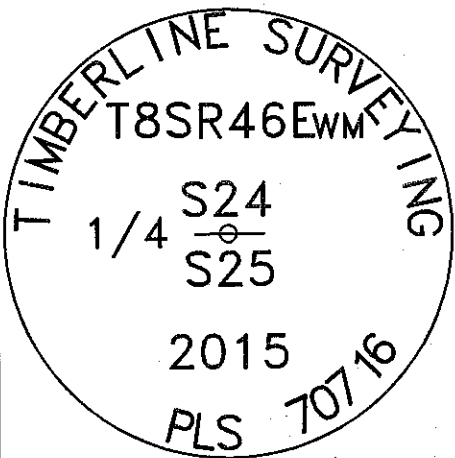
CORNER EVIDENCE FOUND (INCLUDING ACCESSORIES): _____

FOUND STONE 12"X10"X5" WITH NO MARKS 2' EAST OF NORTH/SOUTH FENCE LINE. HELD FOR CORNER LOCATION.

Description of New Monument, Accessories, or Changes: _____

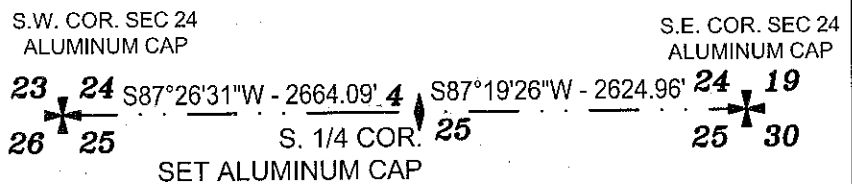
SET ALUMINUM CAP WITH FENO MONUMENT. MONUMENT SET FLUSH WITH THE
GROUND AND MARKED AS SHOWN.

Monument Detail

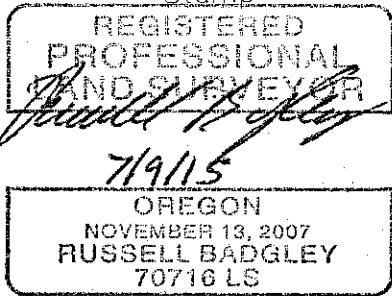


ALUMINUM CAP

Sketch of General Area and Accessories



Stamp



Exp. 12/31/15

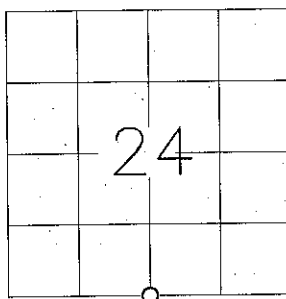
Bus. Name and Address

TIMBERLINE SURVEYING
847 PARCKCENTRE WAY STE. 3
NAMPA, IDAHO 83651

Date of Field Work:

JUNE 30, 2015

Diagram



For County Use Only

Received _____
Filed _____
Sur. No. _____
Dwg. No. _____
Index. No. R-23

Filed July 17, 2015

BAKER COUNTY SURVEYOR

SURVEY NO. 8-46-135