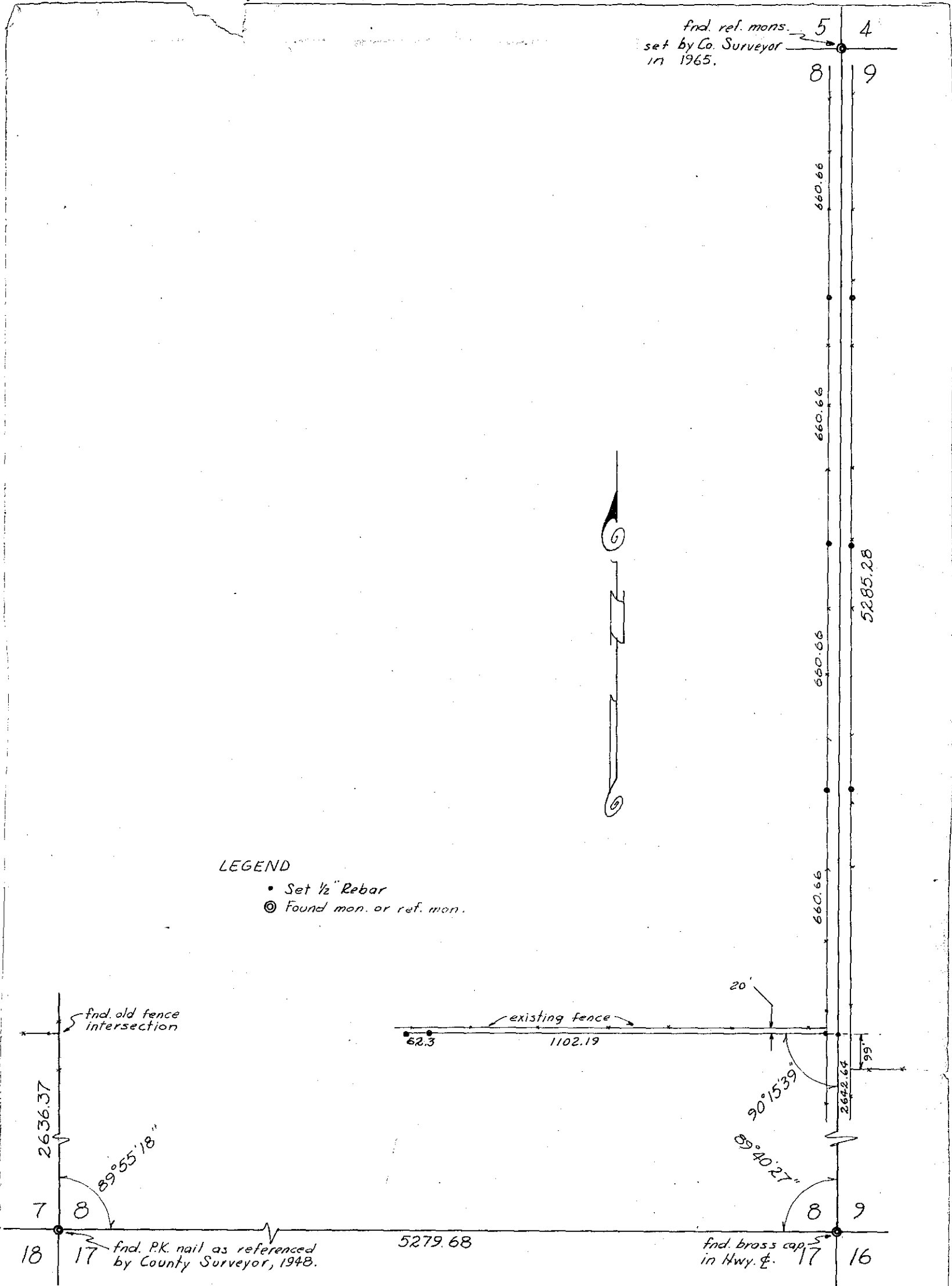
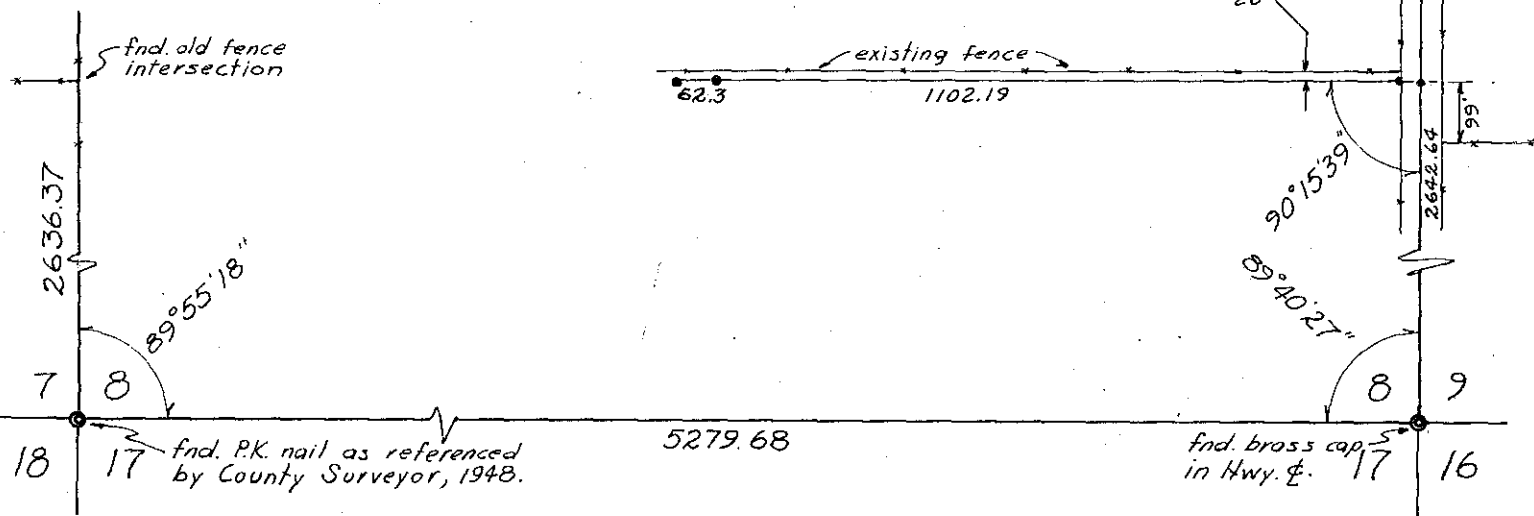


fnd. ref. mons. 5 4  
 set by Co. Surveyor  
 in 1965.



LEGEND

- Set 1/2" Rebar
- ⊙ Found mon. or ref. mon.



FILED July 13, 1973  
 BAKER COUNTY SURVEYOR  
 SURVEY NO. 8-46-17

TRACT SURVEY

A PARCEL IN THE E 1/2 NE 1/4 OF  
 SECTION 8, T.8 S., R.46 E., W.M.

Scale 1" = 300'

Surveyed June 29, 1973  
 for Willard Turk.

