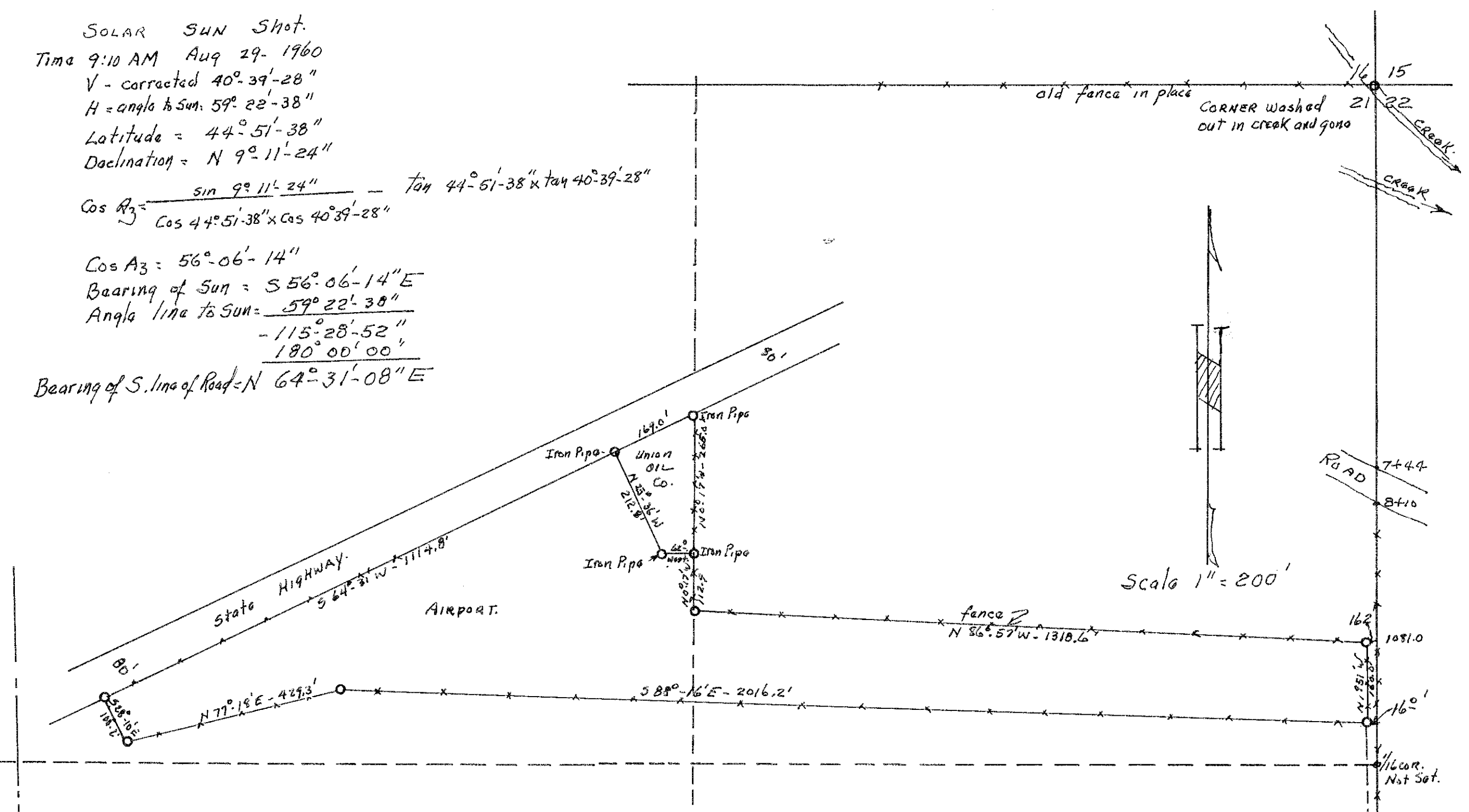


SOLAR SUN Shot.
 Time 9:10 AM Aug 29-1960
 V - corrected 40°-39'-28"
 H = angle to Sun 59°-22'-38"
 Latitude = 44°-51'-38"
 Declination = N 9°-11'-24"

$$\cos A_3 = \frac{\sin 9^\circ 11' 24''}{\cos 44^\circ 51' 38'' \times \cos 40^\circ 39' 28''} = \tan 44^\circ 51' 38'' \times \tan 40^\circ 39' 28''$$

cos A3 = 56°-06'-14"
 Bearing of Sun = S 56°-06'-14" E
 Angle line to Sun = 59°-22'-38"

Bearing of S. line of Road = N 64°-31'-08" E



Description of Airport.

A tract of land in N 1/2 NE 1/4 Sec. 21, Tp. 8 S. R. 46 E. W. M and described as follows:

Beginning at a point N 1° 31' 36" W - 1396.7 ft. from the 1/4 Section Corner between Sections 21-22 Tp. 8 S. R. 46 E. W. M, thence N 1° 51' W - 160.0 ft.; thence N 86° 57' W - 1318.6 ft.; thence N 0° 17' W - 112.9 ft.; thence Due West 62.0 ft.; thence N 25° 36' W - 212.8 ft.; thence S 64° 31' W - 1114.8 ft.; thence S 28° 10' W - 100.2 ft.; thence N 77° 18' E - 429.3 ft.; thence S 88° 16' E - 2016.2 ft. to the point of beginning and containing 120 acres more or less.

DESCRIPTION FOR UNION OIL COMPANY.

A tract of land in NW 1/4 NE 1/4 of Section 21, Tp. 8 S. R. 46 E. W. M and described as follows:

Beginning at a point N 0° 59' 40" W - 1556.7 ft.; thence N 86° 57' W - 1334.8 ft.; thence N 0° 17' W - 112.9 ft. from the 1/4 Section Corner between Sections 21 and 22 of Tp. 8 S. R. 46 E. W. M. and running thence Due West 62.0 ft.; thence N 25° 36' W - 212.8 ft. to the south right of way line of the state Highway; thence N 64° 31' E - 169.0 ft.; thence S 0° 17' E - 265.0 ft. to the point of beginning.

LINE	Bearing	Dist	Latitude		Departure	
			N	S	E	W
1	N 1° 51' W	160.0	159.92	—	—	5.16
2	N 86° 57' W	1318.6	70.16	—	—	1316.78
3	N 0° 17' W	112.9	112.89	—	—	0.52
4	Due West	62.0	—	—	—	62.00
5	N 25° 36' W	212.8	191.90	—	—	91.95
6	S 64° 31' W	1114.8	—	479.60	—	1004.94
7	S 28° 10' W	100.2	—	83.23	47.30	—
8	N 77° 18' E	429.3	99.37	—	418.79	—
9	S 88° 16' E	2016.2	—	60.99	2015.29	—
			629.24	628.92	2481.38	2481.30



9-12-60
 8-46-2

21 22
 1/4 CORNER
 at fence Intersection.