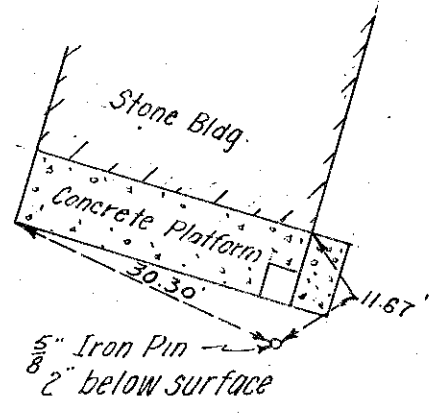


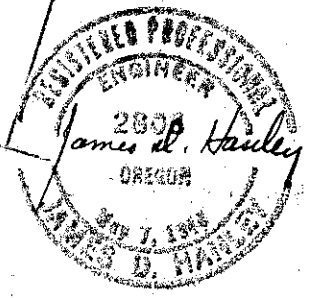
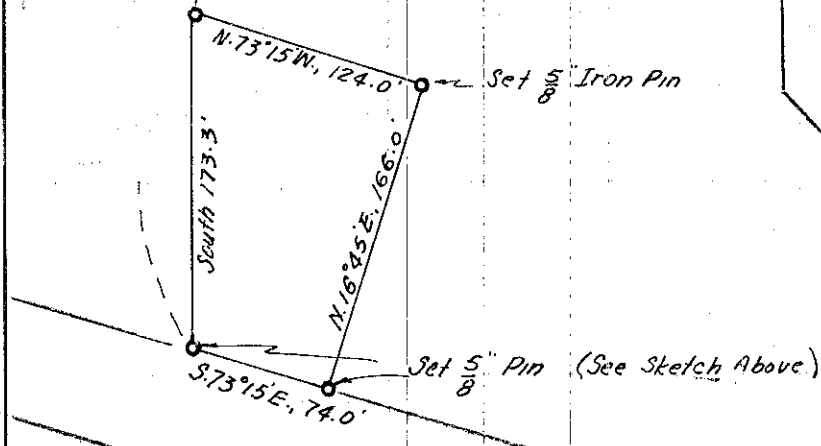
N.W. Cor. Sec. 22, T.8 S., R. 46 E., W.M.

FILED June 27, 1957
 BAKER COUNTY SURVEYOR
 DISTRICT 8-46-1

Reference for Southeast corner
 of Tract



Beginning at a point 749 feet South of the Northwest corner of Section 22, T.8 S., R. 46 E., W.M.; thence S. 73°15' E., 74.0 ft.; thence N. 16°45' E., 166.0 ft.; thence N. 73°15' W., 124.0 ft.; thence South 173.3 ft. to the point of beginning.



6-27-57
 8-46-1