

T. 8 S., R. 46 E., W. M.

\* Flat File

\*\* Oversize

Filing Date	Section No.	Survey No.	Remarks	Name
March 22, 2017	Sec. 3 & 4	143	PP-2017-003 for J. Young (see 7-46-160)	J. Hatfield
March 22, 2017	A-11 Sec. 4	144	Record of Corner Monumentation	J. Hatfield
March 22, 2017	A-13 Sec 3	145	Record of Corner Monumentation	J. Hatfield
March 22, 2017	A-15 Sec.3	146	Record of Corner Monumentation	J. Hatfield
March 22, 2017	A-17 Sec. 3	147	Record of Corner Monumentation	J. Hatfield
March 22, 2017	B-13 Sec. 3	148	Record of Corner Monumentation	J. Hatfield
March 22, 2017	B-15 Sec. 3	149	Record of Corner Monumentation	J. Hatfield
March 22, 2017	C-15 Sec. 3	150	Record of Corner Monumentation	J. Hatfield
March 22, 2017	C-17 Sec. 3	151	Record of Corner Monumentation	J. Hatfield
March 22, 2017	E-15 Sec. 3	152	Record of Corner Monumentation	J. Hatfield
June 27, 2017	SW14SE1/4 of 8	153	MOS for L. Miley & M. Brisk	J. Hatfield
November 13, 2017	NW1/4,NE1/4 of 17	154	MOS for Carly & Linda Miley & Mary Woody	J. Hatfield
November 27, 2017	NW1/4NE1/4 of 17	155	MOS for Terry Vaughan	J. Hatfield
April 4, 2018	E1/2NW1/4 of 22	156	MOS, proposed Property Line Adj. for David Durr	J. Hatfield
November 30, 2018	LM Lloyds Add Halfway	157	Vac. 2018-146 Modified plat in bk "O" pg 11	TJH
December 26, 2018	NE1/4NE1/4 of 17	158	MOS w/2 pg narrative for Richland Weed & Seed	J. Hatfield
December 31, 2018	NE1/4 of 21	159	MOS of PLA for Jim Brink, Etal.	J. Hatfield
January 16, 2019	NW1/4N E1/4 of 17	160	Prop.Line Adj -MOS for Miley	J. Hatfield

T. 7 S., R. 43 E., W. M.

\* Flat File

\*\* Oversize

Filing Date	Section No.	Survey No.	Remarks	Name
October 18, 1988	R-5	192	Balm cad. Record of Cor. Monumentation	JDH
October 18, 1988	R_7	193	Balm cad. Record of Cor. Monumentation	JDH
October 18, 1988	R-9	194	Balm cad. Record of Cor. Monumentation	JDH
October 18, 1988	T-1	195	Balm cad. Record of Cor. Monumentation	JDH
October 18, 1988	T-13	196	Balm cad. Record of Cor. Monumentation	JDH
October 18, 1988	V-1	197	Balm cad. Record of Cor. Monumentation	JDH
October 18, 1988	V-3	198	Balm cad. Record of Cor. Monumentation	JDH
October 18, 1988	V-5	199	Balm cad. Record of Cor. Monumentation	JDH
October 18, 1988	V-9	200	Balm cad. Record of Cor. Monumentation	JDH
October 18, 1988	V-11	201	Balm cad. Record of Cor. Monumentation	JDH
October 18, 1988	V-13	202	Balm cad. Record of Cor. Monumentation	JDH
October 18, 1988	X-5	203	Balm cad. Record of Cor. Monumentation	JDH
January 11, 1989	7,8,17,18,19,20	204 **	Balm Cadastral Survey Plat	JDH
			204 filed in oversize map cabinet @ entrance	
January 8, 2019	SE1/4NW1/4 of 20	205	Part.Plat. P2018-008 for Mires, Weber, Triplett	LLM
		206		
		207		

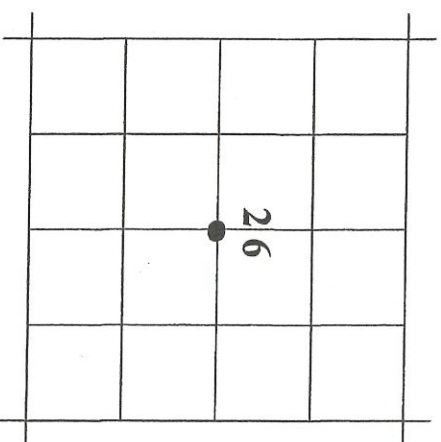


Filing Date	Section No.	Survey No.	Remarks	Name
May 20, 2011	T-19 of 26	93A	Record of Corner Restoration	J.Hatfield
June 6, 2012	S1/2 of 26	94	MOS -USA for ID.Power Co. &Kleinfelder West	Northstar/IPC
October 6, 2015	Sec 23 & 24	95	remon Hwy 86 Richland City Section	ODOT
October 8, 2015	SE1/4NE1/4 of 23	96	P2015-008 for Northeast Oregon Housing	TJH
December 28, 2015	SE1/4 of 13-NW1/4 24	97	PLA for Chad Delcurto	BG&B
May 29, 2018	NW1/4&NE1/4 of 10	98	MOS for City of Richland & Randell	J.Hatfield
July 20, 2018	SW 1/4 of Sec. 24	99	SD2018-001 Friends in Low Places/Hulse	TJH
September 12, 2018	Sec.3	100	Survey/Subdivision for D. Holland (8-45-151)	J.Hatfield
September 12, 2018	C-13	101	Record of Corner Monumentation	J.Hatfield
September 12, 2018	C-15	102	Record of Corner Monumentation	J.Hatfield
September 12, 2018	C-17	103	Record of Corner Monumentation	J.Hatfield
October 22, 2018	NW1/4, NE1/4 of 10	104	PP 2018-007 for City of Richland	J.Hatfield

# CORNER RESTORATION

**CORNER:** C1/4 SEC. 26 TWP. 9 S. RANGE 45 E., W.M.

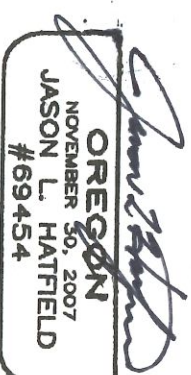
**ORIGINAL SURVEY BY:** Corner Not Previously Established



**ORIGINAL DESCRIPTION:** None

**RESTORATION BY, STAMP AND DATE:**

J.L. Hatfield, PLS



OREGON  
NOVEMBER 30, 2007  
JASON L. HATFIELD  
#69454

EXPIRES: 6/30/2011

May 11, 2011

**EVIDENCE FOUND:** None

**DESCRIPTION OF MONUMENTS AND ACCESSORIES SET AND METHODS USED:**

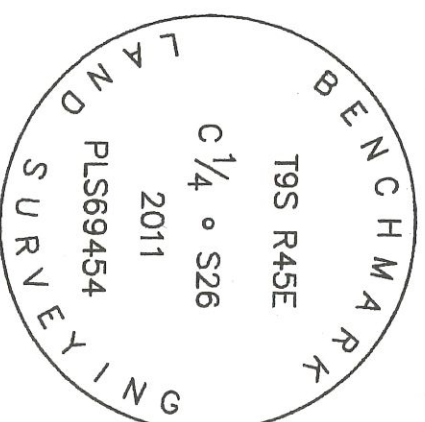
At the corner point, which falls in the paved surface of Daly Creek County Road No. 991, I set a 5/8"x1 5/8" iron pin, 17" in the ground, with attached 2" diameter aluminum cap marked as shown.

**From which I SET NEW REFERENCE POINTS:**

- ▶ A 5/8"x30" iron pin, bears N62°10'29"E, 36.39 ft., with attached yellow plastic cap marked BENCHMARK SURVEYING
- ▶ A 5/8"x30" iron pin, bears S83°00'12"E, 302.58 ft., with attached yellow plastic cap marked BENCHMARK SURVEYING
- ▶ A 5/8"x30" iron pin, bears S14°55'41"E, 37.27 ft., with attached yellow plastic cap marked BENCHMARK SURVEYING
- ▶ A 5/8"x30" iron pin, bears N72°34'13"W, 59.51 ft., with attached yellow plastic cap marked BENCHMARK SURVEYING

Used RTK GPS to measure the RP's.

See Record Survey No. 9-45-93



FILED May 20, 2011  
BAKER COUNTY SURVEYOR  
SURVEY NO. 9-45-93A