

9

C/4 cor. of sec. 26, T7S, R44E

HISTORY OF ORIGINAL CORNER ESTABLISHMENT:

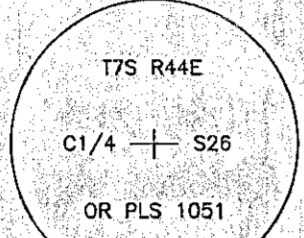
The position of this corner is established by the methods and procedures defined in the U.S. Bureau of Land Management, Manual of Survey Instructions (Manual), and as shown on this Survey.

Note: Corner established by Barry B. Barbour, LS 1051, as described by Survey No. 7-44-77, filed November 7, 1985, in the records of the Baker County Surveyor. A Survey Resolution Agreement (Survey No. 7-44-227), filed on September 11, 1990, subsequently CANCELLED several Barry Barbour surveys including No. 7-44-77. Barbour's CANCELLED corner record states: Set 2 1/2" x 30" galvanized pipe and brass cap marked (as shown below): From which:
A 14" Pine bears N85°E, 19.0 ft. scribed C/4 S26 BT.
An 11" Pine bears S65°W, 21.6 ft. scribed C/4 S26 BT.
Placed 54-9 on a steel fence post 5' west of the corner.

This survey finds this monument erroneously positioned N. 17° W., 0.5 ft. from proper position and does NOT accept the position.

DESCRIPTION OF CORNER EVIDENCE FOUND:

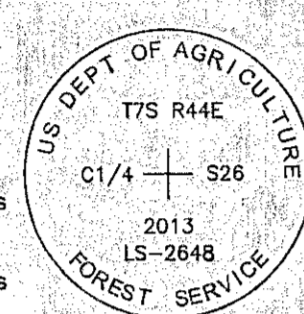
I find Barbour's erroneously positioned monument a 2 1/2" ins. diam brass cap on a 2 1/2" ins. diam. galv. post, projecting 10 ins. above ground, firmly set, mkd. as shown:
I stamp AM on cap, saw off the top 15 ins. of existing monument and bury it alongside new aluminum pipe.



DESCRIPTION OF MONUMENT AND ACCESSORIES ESTABLISHED TO PERPETUATE LOCATION OF THIS CORNER:

At the position determined by this survey, I set a standard Forest Service 3/4" ins. diam. alum. cap on a 2 1/2" ins. diam. by 30 ins. long alum. post, buried 25 ins. in the ground, with clear DEEP-1 magnet at base, in a 3 ft. diam. stone mound to top, cap mkd. as shown.
From which bearing trees mkd. by Barbour:

A ponderosa pine, 16 ins. diam., alive and healthy, bears N. 83 1/2° E., 18.8 ft. dist., with illegible scribe marks visible on partially healed double blaze.
A ponderosa pine, 13 ins. diam., alive and healthy, bears S. 66° W., 21.5 ft. dist., with healed double blaze.
New bearing trees:
A Douglas fir, 9 ins. diam., bears S. 29 1/2° E., 57.9 ft. dist., C/4 S26 BT.
A ponderosa pine, 12 ins. diam., bears N. 10 1/2° W., 15.0 ft. dist., C/4 S26 BT.
I replace existing guard post with steel "T" guard post 2 ft. Wly with Land Survey Monument (54-9) sign.
Auto C/A geographic position:
Lat. 44°55'32.4" N
Long. 117°17'33.2" W
Witnesses: Kristina Powell, Jon Howells and Brenda Johnson



10

1/4 cor. of secs. 23 and 26, T7S, R44E

HISTORY OF ORIGINAL CORNER ESTABLISHMENT:

Original corner set by W. B. Barr, under GLO Contract No. 503, approved March 21, 1885.

Record states: A pine 30 inches in diam. for 1/4 sec. cor. marked 1/4 S on the N. side, from which:

A pine 8 ins. diam. bears N45°E, 20 lks. dist. marked 1/4 SBT.
A pine 24 ins. diam. bears S55 1/2° W, 75 lks. dist. marked 1/4 SBT.

Subsequent Monumentation:

Corner perpetuated by Lester E. Fischer, under BLM Group No. 350, approved June 13, 1977.

Record States: The 1/4 sec. cor. of secs. 23 and 26, monumented with the remains of the original corner tree, a ponderosa pine snag, 34 ins. diam., with scribe marks 1/4 S visible on opened blaze on N. face, from which the remains of the original bearing trees:

A ponderosa pine stump, 11 ins. diam., bears N. 34° E., 20 lks. dist., with scribe marks 1/4 S BT visible on open double blaze. (Record, N. 45° E.)

A ponderosa pine stump, 28 ins. diam., bears S. 28° E., 75 lks. dist., with scribe marks BT visible on opened blaze. (Record, S. 55 1/2° E.)

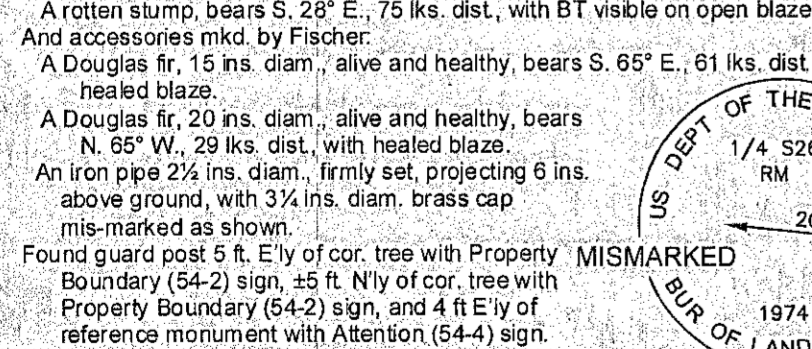
from which new bearing trees and a reference monument:
A fir, 8 ins. diam., bears S. 65° E., 61 lks. dist., mkd. 1/4 S26 BT.
A fir, 8 ins. diam., bears N. 65° W., 29 lks. dist., mkd. 1/4 S23 BT.
An iron post, 28 ins. long, 2 1/2" diam., set 24 ins. in the ground, for a reference monument, bears S. 45° E., 20 lks. dist., with brass cap mkd. 1/4 S26 RM 1974 and an arrow pointing to the corner.

DESCRIPTION OF CORNER EVIDENCE FOUND:
Found pine snag, 34 ins. diam., leaning S'ly, mkd. 1/4 S on previously cut open blaze, with nail in center.
From the recovered monument I find the original bearing tree remains:
A root hole and rotten remains, bears N. 34° E., 20 lks. dist., with 1/4 S BT visible.
A rotten stump, bears S. 28° E., 75 lks. dist., with BT visible on open blaze.
And accessories mkd. by Fischer:
A Douglas fir, 15 ins. diam., alive and healthy, bears S. 65° E., 61 lks. dist., with healed blaze.
A Douglas fir, 20 ins. diam., alive and healthy, bears N. 65° W., 29 lks. dist., with healed blaze.
An iron pipe 2 1/2" ins. diam., firmly set, projecting 6 ins. above ground, with 3/4" ins. diam. brass cap mis-marked as shown.

Found guard post 5 ft. E'ly of cor. tree with Property Boundary (54-2) sign, 45 ft. N'ly of cor. tree with Property Boundary (54-2) sign, and 4 ft. E'ly of reference monument with Attention (54-4) sign.

DESCRIPTION OF MONUMENT AND ACCESSORIES ESTABLISHED TO PERPETUATE LOCATION OF THIS CORNER:

New bearing trees:
A ponderosa pine, 5 ins. diam., bears N. 32 1/2° E., 63.7 ft. dist., mkd. X BT.
A white fir, 10 ins. diam., bears S. 8 1/2° W., 69.9 ft. dist., mkd. 1/4 S26 BT.
Auto C/A geographic position:
Lat. 44°55'56.8" N
Long. 117°17'34.1" W
Witnesses: Gail Walter, Kristina Powell, Brenda Johnson and Jon Howells



DESCRIPTION OF MONUMENT AND ACCESSORIES ESTABLISHED TO PERPETUATE LOCATION OF THIS CORNER:

New bearing trees:
A ponderosa pine, 5 ins. diam., bears N. 32 1/2° E., 63.7 ft. dist., mkd. X BT.
A white fir, 10 ins. diam., bears S. 8 1/2° W., 69.9 ft. dist., mkd. 1/4 S26 BT.
Auto C/A geographic position:
Lat. 44°55'56.8" N
Long. 117°17'34.1" W
Witnesses: Gail Walter, Kristina Powell, Brenda Johnson and Jon Howells

11

E 1/16 cor. of secs. 23, and 26, T7S, R44E

HISTORY OF ORIGINAL CORNER ESTABLISHMENT:

Original corner set by Barry B. Barbour, LS 1051, as described by Survey No. 7-44-125, filed November 7, 1985, in the records of the Baker County Surveyor.

Record states: At surveyed point set 2 1/2" x 30" galvanized pipe and brass cap marked (as shown below): Set pipe 10' in the ground and mound of stone around to cap.
From which by magnetic declination of N20°E:
An 18" Pine bears N60°E, 61.4 ft. scribed E1/16 S23 BT.
A 16" Pine bears S47°W, 110.1 ft. scribed E1/16 S26 BT.
Placed 54-2 and 54-9 on a steel fence post 5' north and placed 54-2 on a steel fence post 5' west of the corner.

DESCRIPTION OF CORNER EVIDENCE FOUND:

Found iron pipe 2 1/2" ins. diam., firmly set, projecting 20 ins. above ground, with 4 ft. diam. rock mound to top, and 2 1/2" ins. diam. brass cap mkd. as shown.
From the recovered monument I find the Barbour bearing trees:
A ponderosa pine, dead and down, bears N. 60° E., 61.4 ft. dist., laying on blaze, with (54-3) and (54-9) signs attached.
A ponderosa pine, 22 ins. diam., alive and healthy, bears S. 47° W., 110.1 ft. dist., with healed double blaze.
Found guard post 5 ft. Wly with Property Boundary (54-2) sign and 5 ft. N'ly with Land Survey Monument (54-9) and Property Boundary (54-2) signs.

DESCRIPTION OF MONUMENT AND ACCESSORIES ESTABLISHED TO PERPETUATE LOCATION OF THIS CORNER:

New bearing tree:
A ponderosa pine, 9 ins. diam., bears N. 11 1/2° E., 97.3 ft. dist., mkd. X BT.
Auto C/A geographic position:
Lat. 44°55'56.9" N
Long. 117°17'15.9" W
Witnesses: Gail Walter, Kristina Powell, Brenda Johnson and Jon Howells

12

cor. of secs. 1, 2, 35, and 36, T7S and T8S, R44E

HISTORY OF ORIGINAL CORNER ESTABLISHMENT:

Original corner set by N. O. Walden, under GLO Contract No. 198, approved June 1, 1874.

Record states: Set basalt rock 14x8x6, 8 in. in ground for corner to secs. 35, 36, 1, 2.

Subsequent Monumentation:

Corner rehabilitated by W. B. Barr, under GLO Contract No. 503, approved March 21, 1885.

Record states: A basalt rock 14x8x6 ins. marked with 1 notch on the E and 5 notches on the W edges firmly planted in the ground.

Corner reestablished by Carl E. Sundet, LS 1684, as described by Survey No. 7-44-69, filed July 25, 1983, in the records of the Baker County Surveyor.

Record states: No evidence of original stone. Set by single proportionate measurement.
Set 2 1/2" x 30" aluminum pipe with 3/4" aluminum cap 22" in ground in mound of stone, marked (as shown below):

Bearing trees:
13' ponderosa pine -N44 1/2° W- 51.0 ft. scribed "T7SR44E S35" in upper blaze and "BT" and brass tag stamped RLS 1664 in lower blaze.
15' ponderosa pine -N43 1/2° E- 64.1 ft. scribed "T7SR44E S36" in upper blaze and "BT" and brass tag stamped RLS 1664 in lower blaze.
10' ponderosa pine -S34° E- 85.1 ft. scribed "T8SR44E S1" in upper blaze and "BT" and brass tag stamped RLS 1664 in lower blaze.
9' ponderosa pine -S70 1/2° W- 71.0 ft. scribed "T8SR44E S2" in upper blaze and "BT" and brass tag stamped RLS 1664 in lower blaze.

Compass declination 19 1/4° East. Note: I set a steel fence post 6' east of corner with USFS 54-4 sign, placed a USFS bearing tree and attention signs on bearing trees and painted red band on smoothed bark at breast height on all bearing trees.

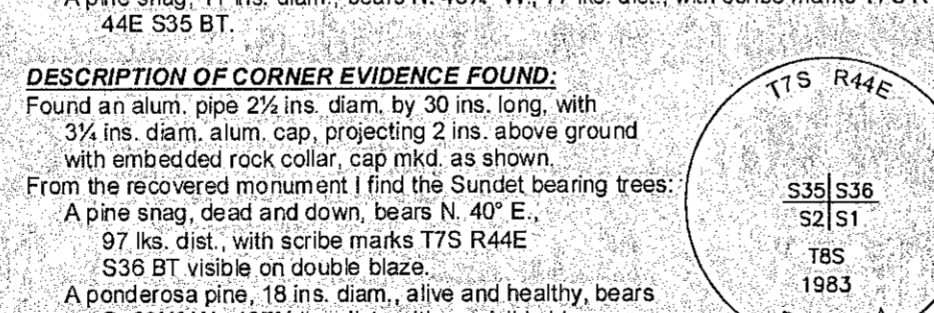
Corner perpetuated by Rick E. Tawney, under BLM Group No. 1554, approved April 21, 1992.

Record States: The cor. of secs. 1, 2, 35, and 36, reestablished at proportionate position by Carl E. Sundet, Registered Land Surveyor No. 1664, in 1983, recorded in the Baker County Surveyors Office file No. 8-44-64. There is no remaining evidence of the original corner, therefore this position is accepted as the corner, monumented with an aluminum post 2 1/2" ins. diam., firmly set, projecting 2 ins. above the ground, and in a mound of stone, 3 ft. base, to top, with an aluminum cap mkd. (as shown below), from which the remains of the bearing trees mkd. by Sundet:

A pine snag, 16 ins. diam., bears N. 40° E., 97 lks. dist., with scribe marks T7S R44E S36 BT visible on open blaze.
A pine, 11 ins. diam., bears S. 66 1/2° W., 107 1/2 lks. dist., with scribe marks 8 R44E S2 BT visible on partially healed blaze.
A pine snag, 11 ins. diam., bears N. 48 1/2° W., 77 lks. dist., with scribe marks T7S R44E S35 BT.

DESCRIPTION OF CORNER EVIDENCE FOUND:
Found an alum. pipe 2 1/2" ins. diam. by 30 ins. long, with 3/4" ins. diam. alum. cap, projecting 2 ins. above ground with embedded rock collar, cap mkd. as shown.
From the recovered monument I find the Sundet bearing trees:
A pine snag, dead and down, bears N. 40° E., 97 lks. dist., with scribe marks T7S R44E S36 BT visible on double blaze.
A ponderosa pine, 18 ins. diam., alive and healthy, bears S. 66 1/2° W., 107 1/2 lks. dist., with no visible blaze, Land Survey Monument (54-9) sign attached, and large scar on North face.
A pine snag, dead and down, bears N. 48 1/2° W., 77 lks. dist., no scribe marks.
Pine remains in root hole, bears S. 34° E., 85.1 ft. dist., with scribe marks T7S R44E S1 visible.
Found guard post 46 ft. E'ly of monument, with Attention (54-4) sign.

DESCRIPTION OF MONUMENT AND ACCESSORIES ESTABLISHED TO PERPETUATE LOCATION OF THIS CORNER:
New bearing trees:
A ponderosa pine, 9 ins. diam., bears N. 56 1/2° E., 12.9 ft. dist., mkd. T7SR44E S36 BT.
A ponderosa pine, 7 ins. diam., bears S. 37° E., 9.1 ft. dist., mkd. T8S R44E S1 BT.
A ponderosa pine, 5 ins. diam., bears N. 51° W., 20.6 ft. dist., mkd. X BT.
Auto C/A geographic position:
Lat. 44°54'21.6" N
Long. 117°17'01.2" W
Witnesses: Kristina Powell and Jon Howells



DESCRIPTION OF CORNER EVIDENCE FOUND:
Found an alum. pipe 2 1/2" ins. diam. by 30 ins. long, with 3/4" ins. diam. alum. cap, projecting 2 ins. above ground with embedded rock collar, cap mkd. as shown.
From the recovered monument I find the Sundet bearing trees:
A pine snag, dead and down, bears N. 40° E., 97 lks. dist., with scribe marks T7S R44E S36 BT visible on double blaze.
A ponderosa pine, 18 ins. diam., alive and healthy, bears S. 66 1/2° W., 107 1/2 lks. dist., with no visible blaze, Land Survey Monument (54-9) sign attached, and large scar on North face.
A pine snag, dead and down, bears N. 48 1/2° W., 77 lks. dist., no scribe marks.
Pine remains in root hole, bears S. 34° E., 85.1 ft. dist., with scribe marks T7S R44E S1 visible.
Found guard post 46 ft. E'ly of monument, with Attention (54-4) sign.

DESCRIPTION OF MONUMENT AND ACCESSORIES ESTABLISHED TO PERPETUATE LOCATION OF THIS CORNER:

New bearing trees:
A ponderosa pine, 9 ins. diam., bears N. 56 1/2° E., 12.9 ft. dist., mkd. T7SR44E S36 BT.
A ponderosa pine, 7 ins. diam., bears S. 37° E., 9.1 ft. dist., mkd. T8S R44E S1 BT.
A ponderosa pine, 5 ins. diam., bears N. 51° W., 20.6 ft. dist., mkd. X BT.
Auto C/A geographic position:
Lat. 44°54'21.6" N
Long. 117°17'01.2" W
Witnesses: Kristina Powell and Jon Howells

13

1/4 cor. of secs. 35, and 36, T7S, R44E

HISTORY OF ORIGINAL CORNER ESTABLISHMENT:

Original corner set by W. B. Barr, under GLO Contract No. 503, approved March 21, 1885.

Record states: Set basalt rock 12x10x9 ins. 8 inches in ground for 1/4 sec. cor. marked 1/4 on the W. side, from which:
A tamarack 4 ins. diam. bears N62°E, 40 lks. dist., marked 1/4 SBT.
A tamarack 4 ins. diam. bears S15°W, 16 lks. dist., marked 1/4 SBT.

Subsequent Monumentation:

Corner reestablished by Barry B. Barbour, LS 1051, as described by Survey No. 7-44-169, filed November 7, 1985, in the records of the Baker County Surveyor. A Survey Resolution Agreement (Survey No. 7-44-227) filed on September 11, 1990, subsequently CANCELLED several Barry Barbour surveys including No. 7-44-77. Barbour's cancelled corner record states: Found no trace of record stone or bearing trees. Corner falls on south slope and is not Tamarack country. At surveyed point set 2 1/2" x 30" galvanized pipe and brass cap marked (as shown below): Set pipe 24' in the ground and mound of stone around to cap.
From which by magnetic declination of N20°E:
A 12' Fir bears N27°E, 90.3 ft. scribed 1/4 S36 BT.
A 14' Fir bears N70°W, 50.1 ft. scribed 1/4 S35 BT.
Placed 54-2 and 54-4 on a steel fence post 5' north and placed 54-2 on a steel fence post 5' east of the corner.

DESCRIPTION OF CORNER EVIDENCE FOUND:

I ACCEPT the position monumented by Barry B. Barbour, during Survey 7-44-77, CANCELLED, as in practical agreement (±S. 26° E., ±1.4 ft.) from a property proportion position, as further described in narrative.
Found iron pipe 2 1/2" ins. diam., firmly set, projecting 4 ins. above ground, with rock collar, and 2 1/2" ins. diam. brass cap mkd. as shown:
From the recovered monument I find the Barbour bearing trees:
A live Douglas fir, 19 ins. diam., bears N. 27° E., 90.3 ft. dist., with healed double blaze.
A Douglas fir, 22 ins. diam., alive and healthy, bears N. 70° W., 50.1 ft. dist., with healed double blaze.
Found guard post 5 ft. N'ly, with Property Boundary (54-2) sign and 5 ft. E'ly with Attention (54-4) and Property Boundary (54-2) signs.

DESCRIPTION OF MONUMENT AND ACCESSORIES ESTABLISHED TO PERPETUATE LOCATION OF THIS CORNER:

New bearing trees:
A ponderosa pine, 10 ins. diam., bears S. 48 1/2° E., 37.4 ft. dist., mkd. 1/4 S36 BT.
A ponderosa pine, 8 ins. diam., bears S. 48 1/2° W., 16.2 ft. dist., mkd. 1/4 S35 BT.
(Note: may be mis-marked as S36)
Auto C/A geographic position:
Lat. 44°54'42.5" N
Long. 117°16'59.4" W
Witnesses: Kristina Powell and Jon Howells

14

N 1/16 cor. of secs. 35 and 36, T7S, R44E

HISTORY OF ORIGINAL CORNER ESTABLISHMENT:

Corner established by Barry B. Barbour, LS 1051, as described by Survey No. 7-44-157, filed November 7, 1985, in the records of the Baker County Surveyor. A Survey Resolution Agreement (Survey No. 7-44-227), filed on September 11, 1990, subsequently CANCELLED several Barry Barbour surveys including No. 7-44-77.

Barbour's cancelled corner record states: At surveyed point set 2 1/2" x 30" galvanized pipe and brass cap marked (as shown below): Set pipe 26" in the ground. No rock in area. From which by magnetic declination of N20°E:

A 10' Fir bears N55°W, 7.5 ft. scribed N1/16 S35 BT.
A 15' Fir bears S71°E, 22.7 ft. scribed N1/16 S36 BT.
Placed 54-2 and 54-9 on a steel fence post 5' south and placed 54-2 on a steel fence post 5' west of the corner.

DESCRIPTION OF CORNER EVIDENCE FOUND:

I ACCEPT the position monumented by Barry B. Barbour, during Survey 7-44-77, CANCELLED, as in practical agreement (S. 7° W., 0.4 ft. dist.) from a property proportion position, as further described in narrative.
Found iron pipe 2 1/2" ins. diam., firmly set, projecting 6 ins. above ground, with 2 1/2" ins. diam. brass cap mkd. as shown.
From the recovered monument I find the Barbour bearing trees:
A live Douglas fir, 21 ins. diam., bears N. 38° W., 7.5 ft. dist., with healed double blaze, tree leans SW'ly (Barbour: N. 55° W.)
A live Douglas fir, 26 ins. diam., bears S. 71° E., 22.7 ft. dist., with healed double blaze.
Found guard post 5 ft. S'ly with Property Boundary (54-2) sign and 3.5 ft. W'ly with Land Survey Monument (54-9) and Property Boundary (54-2) signs.

DESCRIPTION OF MONUMENT AND ACCESSORIES ESTABLISHED TO PERPETUATE LOCATION OF THIS CORNER:

Auto C/A geographic position:
Lat. 44°54'52.9" N
Long. 117°16'58.7" W
Witnesses: Gail Walter, Kristina Powell, Brenda Johnson and Jon Howells

REGISTERED
PROFESSIONAL
LAND SURVEYOR

Ron Walter
OREGON
JANUARY 18, 1994
RON C. WALTER
2648
Renewal Date: June 30, 2014

FILED Nov 25, 2013

BAKER COUNTY SURVEYOR

SURVEY NO. 7-44-264
8-44-159
7-45-167
8-45-142

15

cor. of secs. 25, 26, 35, and 36, T7S, R44E

HISTORY OF ORIGINAL CORNER ESTABLISHMENT:

Original corner set by W. B. Barr, under GLO Contract No. 503, approved March 21, 1885.

Record states: Set a post 4 ft long 4 in diam. 24 inches in ground for cor. to sec. 25, 26, 35 + 36 marked T7S S25 on the N.E. face, R44E S36 on the S.E. face, S35 on the S.W. face and S26 on the N.W. face with 1 notch on the S + E faces, from which:
A fir 5 in diam. bears N18°E, 35 lks. dist., marked T7S R44E S25 BT
A fir 5 in diam. bears S26°E, 19 lks. dist., marked T7S R44E S36 BT
A fir 10 in diam. bears S60°W, 19 lks. dist., marked T7S R44E S35 BT
A fir 20 in diam. bears N5°W, 9 lks. dist., marked T7S R44E S26 BT

Subsequent Monumentation:

Corner remonumented by Lester E. Fischer, under BLM Group No. 350, approved June 13, 1977.
Record States: The cor. of secs. 25, 26, 35, and 36, determined at record bearing and distance from the remains of the original bearing trees:
A root hole, bears N. 18° E., 35 lks. dist.
A ponderosa pine, 17 ins. diam., bears S. 60° W., 19 lks. dist., with scribe marks S R44E S3 visible on open blaze. (Record, fir)
A root hole, bears N. 5° W., 9 lks. dist.
At the corner point: Set an iron post, 28 ins. long, 2 1/2" ins. diam., 24 ins. in the ground, with brass cap mkd. (as shown below), from which new bearing trees:
A ponderosa pine, 7 ins. diam., bears N. 55° E., 55 lks. dist., mkd. T7S R44E S25 BT.
A fir, 8 ins. diam., bears S. 26° E., 101 lks. dist., mkd. T7S R44E S36 BT.
A ponderosa pine, 8 ins. diam., bears N. 8° W., 130 lks. dist., mkd. T7S R44E S26 BT.
Corner perpetuated by Rick E. Tawney, under BLM Group No. 1554, approved April 21, 1992.

Record States: From the cor. of secs. 25, 26, 35, and 36, monumented with an iron post, 2 1/2" ins. diam., firmly set, projecting 7 ins. above the ground with brass cap mkd. (as shown below). From which the remains of an original bearing tree:

A pine snag, 16 ins. diam., bears S. 60° W., 19 lks. dist., with scribe marks R44E S3 visible on open blaze.
and the remains of the bearing trees mkd. by Fischer:
A root hole, bears N. 55° E., 55 lks. dist., alongside of which is lying a pine, 6 ins. diam., with scribe marks T7S R44E S25 BT visible on open blaze.*

A fir, 8 ins. diam., bears S. 27° E. [sic. (Record S26°E.)], 101 lks. dist., with healed blaze.

A pine, 8 ins. diam., bears N. 9° W., 130 lks. dist., with scribe marks S R44E S26 BT visible on open blaze. (Record, N. 8° W.)

and new bearing trees:
A pine, 6 ins. diam., bears N. 53 1/2° E., 51 lks. dist., mkd. T7S R44E S25 BT.
A fir, 18 ins. diam., bears S. 39 1/2° W., 103 1/2 lks. dist., mkd. T7S R44E S35 BT.

DESCRIPTION OF CORNER EVIDENCE FOUND:

Found iron pipe 2 1/2" ins. diam. projecting 6 ins. above ground, with 3/4" ins. diam. brass cap, mkd. as shown.
From the recovered monument I find the original bearing tree remains:
A pine, dead and down, bears S. 60° W., 19 lks. dist., with scribe marks R44E visible on an open blaze.
And accessories mkd. by Fischer:
A Douglas fir, 14 ins. diam., alive and healthy, bears S. 27° E., 101 lks. dist., with healed blaze.
A ponderosa pine, 16 ins. diam., alive and healthy, bears N. 9° W., 130 lks. dist., with healed blaze.
And accessories mkd. by Tawney:
A ponderosa pine, 14 ins. diam., alive and healthy, bears N. 53 1/2° E., 51 lks. dist., with healed blaze.
A Douglas fir cut stump, 23 ins. diam., bears S. 39 1/2° W., 103 1/2 lks. dist., with scribe marks 35 BT visible on an open blaze.
Found guard post 4 ft. E'ly of monument, with Attention (54-4) sign.

DESCRIPTION OF MONUMENT AND ACCESSORIES ESTABLISHED TO PERPETUATE LOCATION OF THIS CORNER:

New bearing trees:
A white fir, 9 ins. diam., bears S. 71 1/2° W., 39.2 ft. dist., mkd. T7S R44E S35 BT.
Auto C/A geographic position:
Lat. 44°55'03.6" N
Long. 117°16'57.7" W
Witnesses: Gail Walter, Kristina Powell, Brenda Johnson, and Jon Howells



Record of Survey Wallowa-Whitman National Forest		