

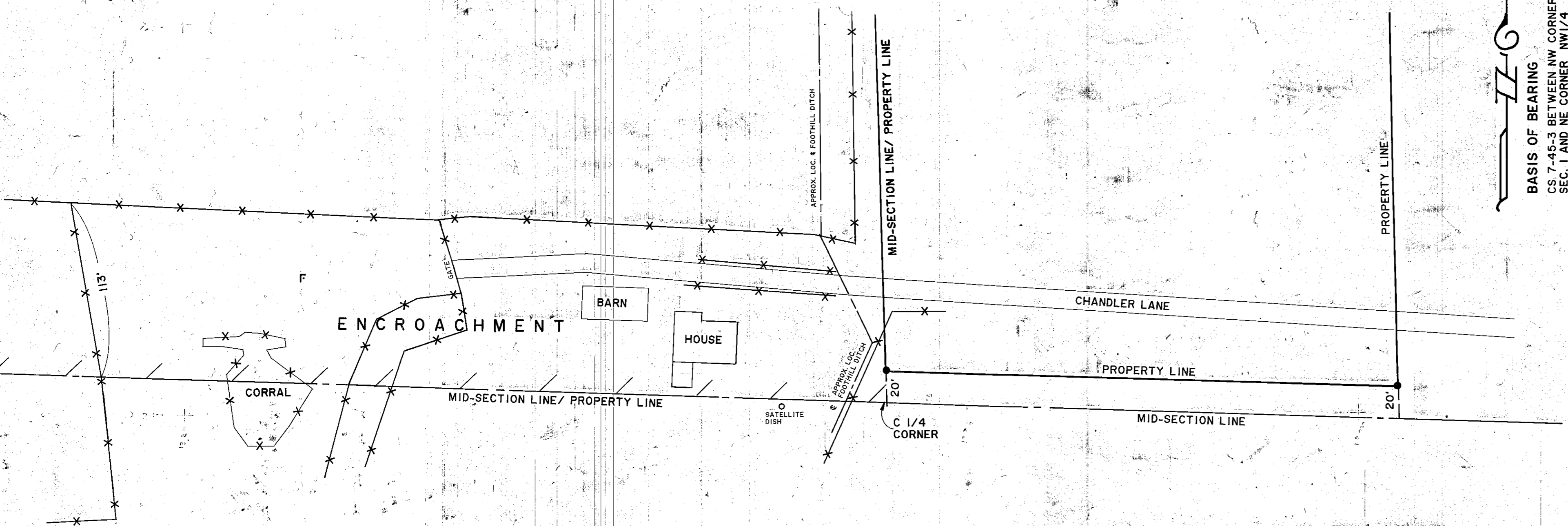
NARRATIVE

This survey for Jay Sly is for the purpose of marking on the ground property located in the W1/2 W1/2 SW1/4 NE1/4 of Section 1, T. 8 S., R. 45 E., W.M. as described in Baker County Deed Record 96 41 010, and the South line of the NW1/4 of said section, township and range, Baker County Deed 93 23 125. The Southwest corner of the NW1/4 (brass cap monument) has been removed. To determine its original position the NW and SW corners of Section 1 were surveyed and the 1/4 corner position proportioned which matched closely to CS 7-45-139. Encroachments are shown on Detail 1 and Detail 2.

DETAIL 1
Scale: 1" = 200'

See Vicinity Map below for corner monuments found and Section breakdown.

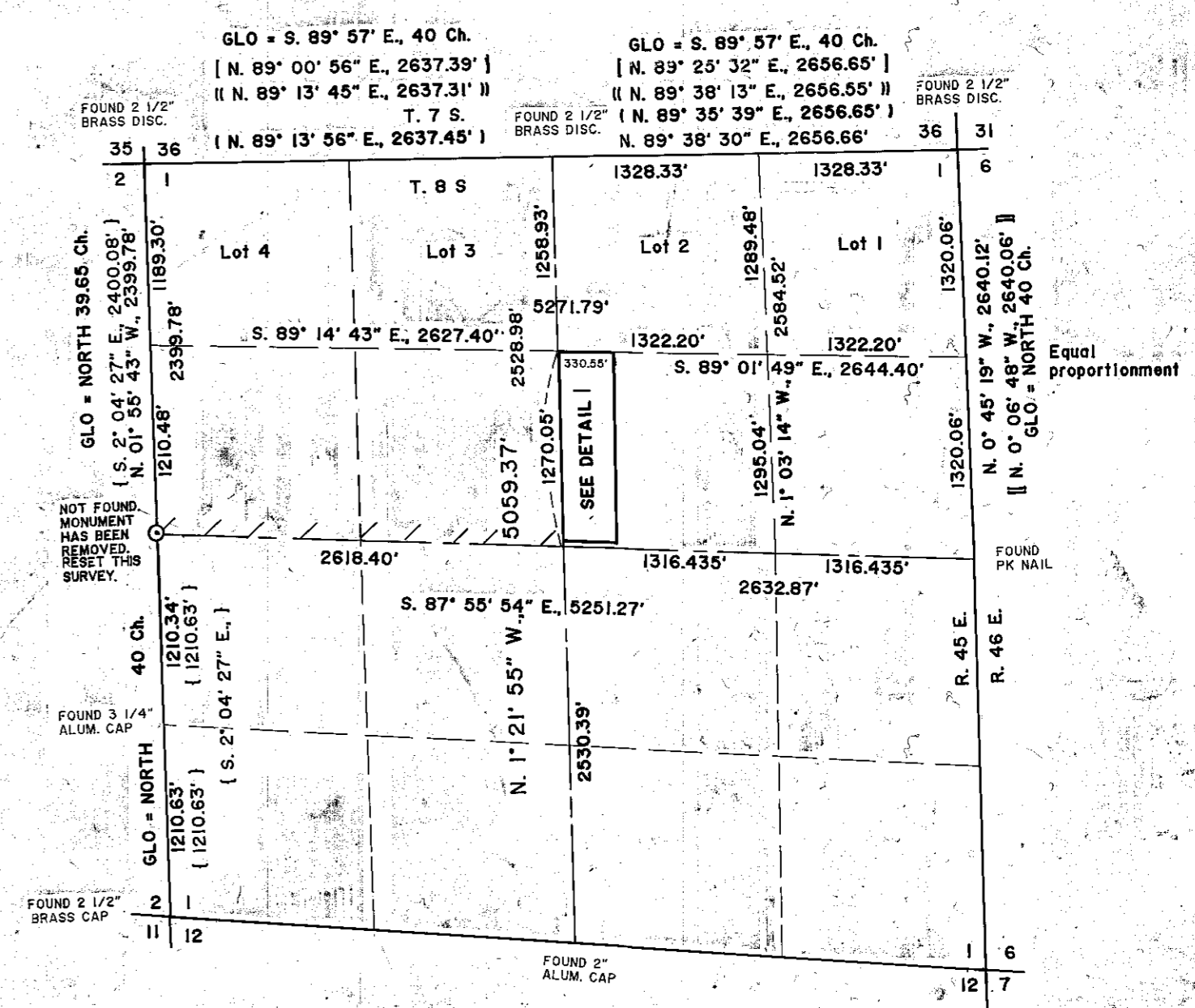
- LEGEND**
- Set 5/8" X 30" rebar with plastic cap marked "HANLEY ENGR. PLS 1206".
 - ✕ Existing fence line.
 - Marked property line with steel fence posts.
 - () Record bearing and distance CS 7-45-3.
 - () Record bearing and distance CS 7-45-149.
 - () Record bearing and distance CS 7-45-45.
 - () Record bearing and distance CS 7-45-49.
 - () Record bearing and distance CS 7-45-139.
 - Set 2 1/2" brass cap mon. on 1" galv. iron pipe for W1/4 corner Sec. 1.



DETAIL 2
Scale: 1" = 50'

BASIS OF BEARING
CS 7-45-3 BETWEEN NW CORNER SEC. 1 AND NE CORNER NW1/4 SEC. 1 (N. 89° 13' 56" E.)

VICINITY MAP



MAP OF SURVEY
A parcel in the W1/2 W1/2 SW1/4 NE1/4 Sec. 1, T. 8 S., R. 45 E., W.M.
Surveyed April 7 - 18, 1997 for Jay Sly
Scales as shown

Sec. 1, T. 8 S., R. 45 E., W.M.
Scale: 1" = 1000'

HANLEY ENGINEERING
2043 MAIN STREET
BAKER CITY, OREGON

FILED OCT. 23, 1997
BAKER COUNTY SURVEYOR
SURVEY NO. 8-45-141