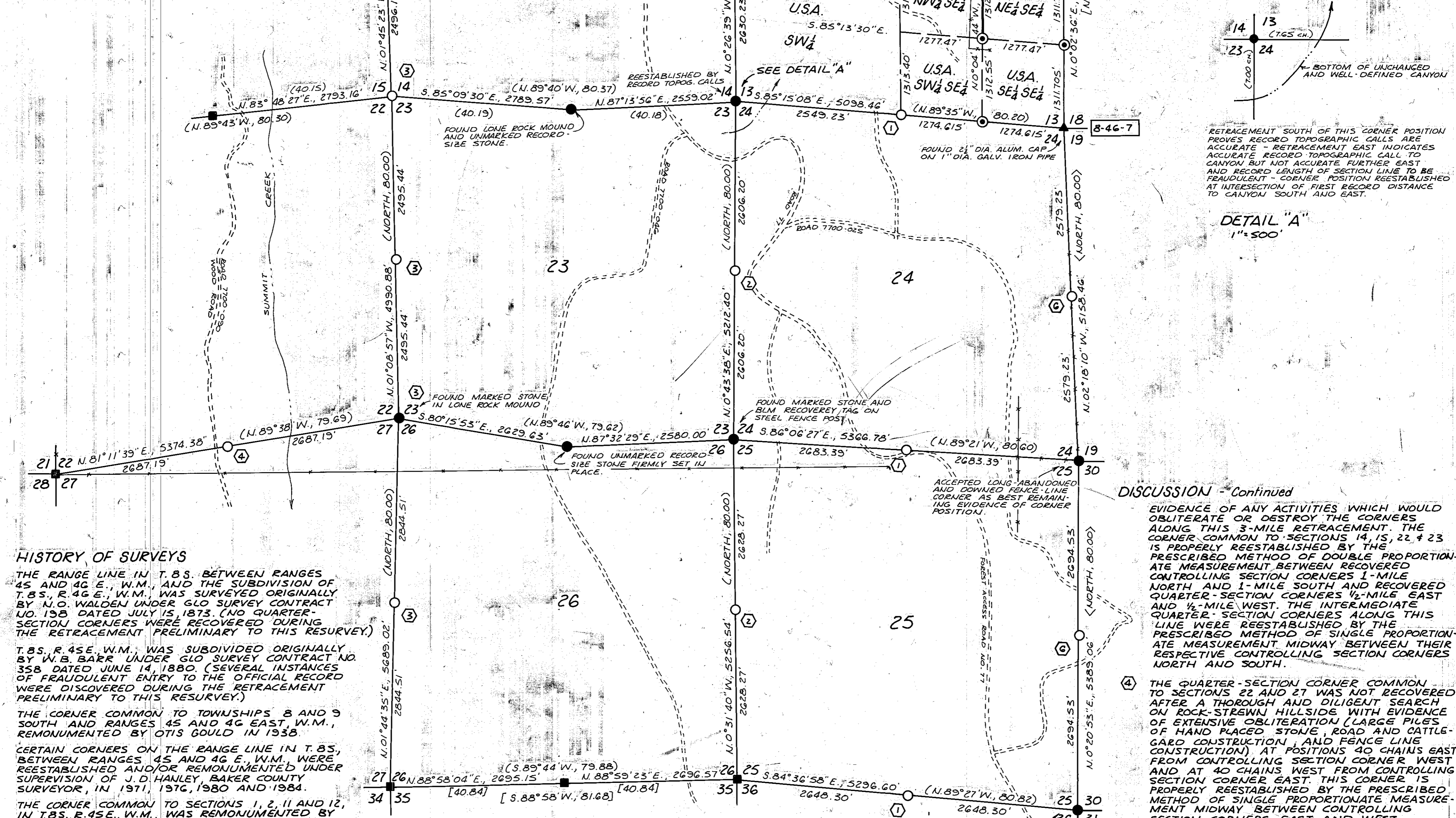
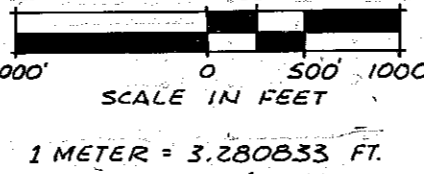


LEGEND

- SET 2" x 30" ALUMINUM PIPE WITH 2 1/2" ALUMINUM CAP AT RECOVERED ORIGINAL CORNER POSITION... FOUND BEASS CAP ON IRON PIPE SET BY THE USDA... FOUND CORNER MONUMENT OR REFERENCE MONUMENTS SET UNDER THE SUPERVISION OF THE BAKER COUNTY SURVEYOR... FOUND 2 1/2" BEASS CAP ON 2" IRON PIPE SET BY VICTOR MCLIND, ORLS 334... ORIGINAL CORNER POSITION DECLARED LOST... SET 2" x 30" ALUMINUM PIPE WITH 2 1/2" ALUMINUM CAP AT POSITION DETERMINED BY APPROPRIATE SINGLE OR DOUBLE PROPORTIONATE MEASUREMENT... RECORD OF ORIGINAL SURVEY PERFORMED BY W.O. WALDEN UNDER GLO SURVEY CONTRACT NO. 198 DATED JULY 15, 1873... RECORD OF ORIGINAL SURVEY PERFORMED BY W.B. BARR UNDER GLO SURVEY CONTRACT NO. 358 DATED JUNE 14, 1880... RECORD OF SURVEY SUPERVISED AND RECORDED BY J.D. HANLEY, ORLS 1206, UNDER BAKER COUNTY SURVEY NO. B-46-27, OF AS NOTED... NATIONAL FOREST BOUNDARY MARKED THIS SURVEY... EXISTING FENCE LINE... FOREST ACCESS ROAD... SEE DISCUSSION INDEXED BY NUMBER.

NOTE FOR RECORD OF CORNER MONUMENTATION SEE CERTIFIED RECORD OF LAND CORNER MONUMENTATION FILED SEPARATELY.

BEARINGS ARE BASED ON A SOLAR OBSERVATION TAKEN AT CONTROL POINT NO. 1 WHICH BEARS N. 02° 04' 30" E., 417.66 FEET DISTANCE FROM THE REESTABLISHED QUARTER SECTION CORNER COMMON TO SECTIONS 10 AND 11, T.8S., R.45E., W.M. THE MEAN MEASURED MAGNETIC DECLINATION IS 20° EAST.



HISTORY OF SURVEYS

THE RANGE LINE IN T.8S. BETWEEN RANGES 45 AND 46 E., W.M. AND THE SUBDIVISION OF T.8S., R.45E., W.M. WAS SURVEYED ORIGINALLY BY W.O. WALDEN UNDER GLO SURVEY CONTRACT NO. 198 DATED JULY 15, 1873. (NO QUARTER SECTION CORNERS WERE RECOVERED DURING THE RETRACEMENT PRELIMINARY TO THIS RESURVEY.) T.8S., R.45E., W.M. WAS SUBDIVIDED ORIGINALLY BY W.B. BARR UNDER GLO SURVEY CONTRACT NO. 358 DATED JUNE 14, 1880. (SEVERAL INSTANCES OF FRAUDULENT ENTRY TO THE OFFICIAL RECORD WERE DISCOVERED DURING THE RETRACEMENT PRELIMINARY TO THIS RESURVEY.) THE CORNER COMMON TO TOWNSHIPS 8 AND 9 SOUTH AND RANGES 45 AND 46 E., W.M., RECOVERED BY OTIS GOULD IN 1938. CERTAIN CORNERS ON THE RANGE LINE IN T.8S. BETWEEN RANGES 45 AND 46 E., W.M. WERE REESTABLISHED AND/OR REMONUMENTED UNDER SUPERVISION OF J.D. HANLEY, BAKER COUNTY SURVEYOR, IN 1971, 1976, 1980 AND 1984. THE CORNER COMMON TO SECTIONS 1, 2, 11 AND 12, IN T.8S., R.45E., W.M. WAS RECOVERED BY VICTOR MCLIND ORLS 334, IN 1979, UNDER USDI-USFS CONTRACT. CERTAIN ORIGINAL GLO CORNERS ON THE SOUTH BOUNDARY AND INTERIOR OF T.8S., R.45E., W.M. WERE REESTABLISHED AND/OR REMONUMENTED BY WILLIAM D. KIMMEL, BLM CADASTRAL SURVEYOR, IN 1983 AND 1984.

SURVEYOR'S CERTIFICATE

I, WILLIAM L. HANLEY, A REGISTERED LAND SURVEYOR IN THE STATE OF OREGON, DO HEREBY CERTIFY THAT THIS PLAT AND CERTIFIED RECORD OF LAND CORNER MONUMENTATION CERTIFICATES ACCOMPANYING THIS PLAT, AND FILED SEPARATELY, IS A TRUE REPRESENTATION OF A SURVEY PERFORMED BY ME IN ACCORDANCE WITH THE STATUTES OF THE STATE OF OREGON AND WITH THE ARTICLES OF MY CONTRACT.



NARRATIVE OF SURVEY

THIS DEPENDENT RESURVEY AND PARTIAL SUB-DIVISIONAL SURVEY OF SECTIONS 12 AND 13, IN T.8S., R.45E., W.M., WAS PERFORMED BY WILLIAM L. HANLEY, ORLS NO. 1639, AT THE REQUEST OF THE USDA-FOREST SERVICE FOR THE PURPOSE OF MONUMENTING AND RECOVERING LOST OR REESTABLISHED ORIGINAL GOVERNMENT LAND CORNERS AND ESTABLISHING CERTAIN LAND OWNERSHIP CORNERS AND BOUNDARY LINES WHICH DELINEATE THE BOUNDARY BETWEEN PRIVATE OWNERSHIP AND THOSE LANDS OF THE PUBLIC DOMAIN ADMINISTERED BY THE USDA-FOREST SERVICE. CORNER MONUMENTS ESTABLISHED DURING THIS SURVEY ARE DESCRIBED IN THE LEGEND TO THIS PLAT. BOUNDARY LINES WERE ESTABLISHED BY OFFSET MEASUREMENT FROM CONTROL SURVEY POINTS AND MARKED WITH 6-FOOT LONG STEEL FENCE POSTS SPACED AT APPROXIMATELY 200-FOOT INTERVALS WITH USFS BOUNDARY SIGNS SA-2 ATTACHED. FIELD INSTRUMENTS USED WERE A SECOND THEODOLITE AND ELECTRONIC DISTANCE METER CONTAINED IN A SINGLE UNIT MANUAL TOTAL STATION WITH ANGLES AND DISTANCES TAKEN TO REMOTE SINGLE OR TRIPLE-PRISM ASSEMBLIES ATTACHED TO A 4-FOOT TELESCOPING RANGE POLE PLUMBED WITH 2-LEAD AND BACKSIGHTS TAKEN TO NAIL IN 4-FOOT LATH MEASUREMENTS TO CORNER ACCESSORIES AND PHOTO IDENTIFICATION POINTS WITH A STAFF CAMERA WITH 3-INCH NEEDLE AND STEEL TAPE.

DISCUSSION

SIGNIFICANT DIFFERENCES BETWEEN THE OFFICIAL ORIGINAL SURVEY RECORD AND THE RETURNS OF THIS SURVEY WERE DISCOVERED REGARDING THE ORIGINAL TOWNSHIP SUBDIVISION BOUNDARY BETWEEN W.B. BARR IN 1880 AND THOSE DIFFERENCES ARE DISCUSSED BELOW. 1) THE QUARTER-SECTION CORNERS COMMON TO SECTIONS 1 AND 12, 12 AND 13, 13 AND 24, 24 AND 25, AND TO SECTIONS 25 AND 36 EACH BEING 1/4-MILE WEST OF THE EAST TOWNSHIP BOUNDARY, W.M., WERE NOT RECOVERED AFTER A THOROUGH AND DILIGENT SEARCH EFFORT. (SEARCH AREAS WERE CONCENTRATED AT 40 CHAINS EAST OF THE CONTROLLING WEST SECTION CORNER AND AT 40 CHAINS WEST OF THE CONTROLLING EAST SECTION CORNER - THE CORNER SEARCH AREA WAS BEST SUPPORTED BY RECORD TOPOGRAPHIC CALLS.) THE DIFFERENCE IN LATITUDINAL POSITION OF THE RESPECTIVE ADJACENT SECTION CORNER CORNER EAST OF EACH OF THESE LOST QUARTER-SECTION CORNERS VARIES FROM 367 FEET TO 497 FEET. THE WEST SECTION CORNERS ALWAYS BEING MOST NORTHERLY. RETRACEMENT SURVEY PERFORMED BY THE USDI-BLM IN 1983 AND

1984 RECORDED UNDER BAKER COUNTY SURVEY NO. B-45-74 SHOWS THE SECTION LINE BETWEEN SECTIONS 35 AND 36 TO BE 85.10 CHAINS IN LENGTH (RECORD STATES 80.0) IN A STRAIGHT MEASUREMENT FROM THE CORNER COMMON TO SECTIONS 14 AND 15, T.8S., R.45E., W.M. MADE IN THE PERFORMANCE OF THE ORIGINAL TOWNSHIP SUBDIVISIONAL SURVEY PER THE PRESCRIBED METHODS, THE SAID LATITUDINAL DIFFERENCE BETWEEN ADJACENT SECTION CORNERS WOULD BE OF RECORD OR THE ERROR WOULD HAVE BEEN CORRECTED, NEITHER OF WHICH IS THE CASE. THEREFORE, IT WAS DETERMINED THE RECORD FOR THE ESTABLISHMENT OF THE AFORESAID LOST QUARTER-SECTION CORNERS IS FRAUDULENT THAT THE CORNERS WERE NOT IN FACT ACTUALLY ESTABLISHED, AND THAT THE SAID LOST CORNERS ARE PROPERLY REESTABLISHED BY THE PRESCRIBED METHOD OF SINGLE PROPORTIONATE MEASUREMENT MIDWAY BETWEEN THEIR RESPECTIVE CONTROLLING SECTION CORNERS EAST AND WEST. SUPPORT FOR THIS REESTABLISHMENT IS THE NORTH LINE OF SECTION 12, MARKED BY A LONG-USED AND ACCEPTED BOUNDARY FENCE LINE CONNECTING THE CONTROLLING SECTION CORNER WEST AND THE PROJECTED FENCE-LINE AT COUNTY ROAD RIGHT-OF-WAY INTERSECTION EAST TO SECTION CORNER EAST. THE REESTABLISHED QUARTER-SECTION CORNER COMMON TO SECTIONS 12 AND 13 IS POSITION EXACTLY IN SAID FENCE LINE.

- 2) THE QUARTER-SECTION CORNERS COMMON TO SECTIONS 13 AND 14 TO SECTIONS 23 AND 24, AND TO SECTIONS 25 AND 26 WERE NOT RECOVERED AFTER A THOROUGH AND DILIGENT SEARCH AND SUBSEQUENTLY DECLARED LOST. THEY ARE PROPERLY REESTABLISHED BY THE PRESCRIBED METHOD OF SINGLE PROPORTIONATE MEASUREMENT MIDWAY BETWEEN THEIR RESPECTIVE CONTROLLING SECTION CORNERS NORTH AND SOUTH. IT IS NOTED THAT THE RECORD TOPOGRAPHIC CALLS ARE GENERALLY CONSISTENT WITH THOSE FEATURES ENCOUNTERED DURING THIS SURVEY ALONG THIS LINE.
- 3) THE SECTION LINES BETWEEN SECTIONS 14 AND 15, BETWEEN SECTIONS 22 AND 23, AND BETWEEN SECTIONS 26 AND 27 WERE THOROUGHLY AND DILIGENTLY SEARCHED WITH THE CORNER COMMON TO SECTIONS 22, 23, 26 & 27 BEING THE CORNER COMMON TO SECTIONS 14 AND 15. THE RECOVERED SECTION CORNER IS POSITIVE WITH RESPECT TO THE CORNER STONE AND SUPPORTING ROCK MOUND, HOWEVER THE RECORD TOPOGRAPHIC CALLS DO NOT SUPPORT THE CORNER POSITION AND ARE DETERMINED TO BE FRAUDULENT. SIMILARLY, THE RETRACEMENT 2 MILES NORTH AND 1 MILE SOUTH OF THE SAID RECOVERED SECTION CORNER IS NOT CONSISTENT WITH THE OFFICIAL RECORD AND SAID RECORD IS FRAUDULENT. THERE IS NO

DISCUSSION - Continued

EVIDENCE OF ANY ACTIVITIES WHICH WOULD OBLITERATE OR DESTROY THE CORNERS ALONG THIS 3-MILE RETRACEMENT THE CORNER COMMON TO SECTIONS 14, 15, 22 & 23 IS PROPERLY REESTABLISHED BY THE PRESCRIBED METHOD OF DOUBLE PROPORTIONATE MEASUREMENT BETWEEN RECOVERED CONTROLLING SECTION CORNERS 1-MILE NORTH AND 1-MILE SOUTH AND RECOVERED QUARTER-SECTION CORNERS 1/4-MILE EAST AND 1/4-MILE WEST. THE INTERMEDIATE QUARTER-SECTION CORNERS ALONG THIS LINE WERE REESTABLISHED BY THE PRESCRIBED METHOD OF SINGLE PROPORTIONATE MEASUREMENT MIDWAY BETWEEN THEIR RESPECTIVE CONTROLLING SECTION CORNERS NORTH AND SOUTH. 4) THE QUARTER-SECTION CORNER COMMON TO SECTIONS 22 AND 27 WAS NOT RECOVERED AFTER A THOROUGH AND DILIGENT SEARCH ON ROCK STEEP HILLSIDE WITH EVIDENCE OF EXTENSIVE OBLITERATION (LARGE PILES OF HAND PLACED STONE, ROAD AND CATTLE-GARD CONSTRUCTION AND FENCE LINE CONSTRUCTION) AT POSITIONS 40 CHAINS EAST FROM CONTROLLING SECTION CORNER WEST AND AT 40 CHAINS WEST FROM CONTROLLING SECTION CORNER EAST. THIS CORNER IS PROPERLY REESTABLISHED BY THE PRESCRIBED METHOD OF SINGLE PROPORTIONATE MEASUREMENT MIDWAY BETWEEN CONTROLLING SECTION CORNERS EAST AND WEST. 5) THE QUARTER-SECTION CORNER COMMON TO SECTIONS 11 AND 14 WAS NOT RECOVERED AFTER A THOROUGH AND DILIGENT SEARCH EFFORT WAS DECLARED LOST, AND PROPERLY REESTABLISHED BY THE PRESCRIBED METHOD OF SINGLE PROPORTIONATE MEASUREMENT MIDWAY BETWEEN CONTROLLING SECTION CORNERS EAST AND WEST. 6) THE EAST QUARTER-SECTION CORNER TO SECTION 25 AND TO SECTION 36 ON THE EAST TOWNSHIP BOUNDARY WERE NOT RECOVERED AFTER A THOROUGH AND DILIGENT SEARCH EFFORT IN AREAS VOID OF EVIDENCE OF ACTIVITIES WHICH WOULD OBLITERATE OR DESTROY THE ORIGINAL CORNER MONUMENTS. THESE LOST QUARTER-SECTION CORNERS TO SECTION 24 ON THE EAST TOWNSHIP BOUNDARY WAS NOT RECOVERED IN SEARCH AREA ALONGSIDE OLD ABANDONED AND DOWN FENCE LINE THE EAST QUARTER-SECTION CORNER TO SECTION 13 WAS NOT RECOVERED IN AREA PREVIOUSLY LOGGED. (THIS CORNER ALSO DECLARED LOST IN 1974 AND 1980 BY THE COUNTY SURVEYOR.) THESE LOST QUARTER-SECTION CORNERS ARE PROPERLY REESTABLISHED BY THE PRESCRIBED METHOD OF SINGLE PROPORTIONATE MEASUREMENT MIDWAY BETWEEN THEIR RESPECTIVE ADJACENT RANGE-LINE SECTION CORNERS.

ACKNOWLEDGEMENT

EXAMINED AND ACCEPTED FOR THE USDA-FOREST SERVICE THIS 30th DAY OF NOVEMBER, 1987. Dennis L. Baylors, Oregon License No. 1636.

RECORD OF SURVEY PLAT

STRINGER CADASTRAL SURVEY USDA-FOREST SERVICE CONTRACT NO. 53-04H1-G-0166N IN T.8S., R.45E., W.M. Surveyed May, June & July, 1987 Scale 1"=1000'

SURVEYED BY: WILLIAM L. HANLEY, OWNER BILL HANLEY SURVEYING CO. 5120 GEARVIEW LN. DE. P.O. BOX 524 BAKEE, OREGON 97814 (503) 523-4325 FILED 12-3-87 BAKER COUNTY SURVEYOR SURVEY NO. B-45-167

FIELD BOOK REFERENCES FIELD BOOK NOS. 1, 2, 3, STRINGER CADASTRAL SURVEY