

TOWNSHIP 8 SOUTH, RANGE 45 EAST, OF THE WILLAMETTE MERIDIAN, OREGON

DEPENDENT RESURVEY AND SUBDIVISION OF SECTIONS

The history of surveys is contained in the field notes.

This plat represents a dependent resurvey of the south boundary, a portion of the west boundary and subdivisional lines, T. 8 S., R. 45 E., Willamette Meridian, Oregon, designed to restore the corners in their true original locations according to the best available evidence, and the subdivision of sections 20, 28, 29, 31, 33, 34, and 35.

Except as shown hereon, the lottings and areas are as shown on the plat approved November 19, 1880.

The survey was executed by William D. Kimmel, Cadastral Surveyor, beginning August 31, 1983, and completed August 20, 1984, pursuant to Special Instructions dated August 4, 1983, under Group Number 1169, Oregon.

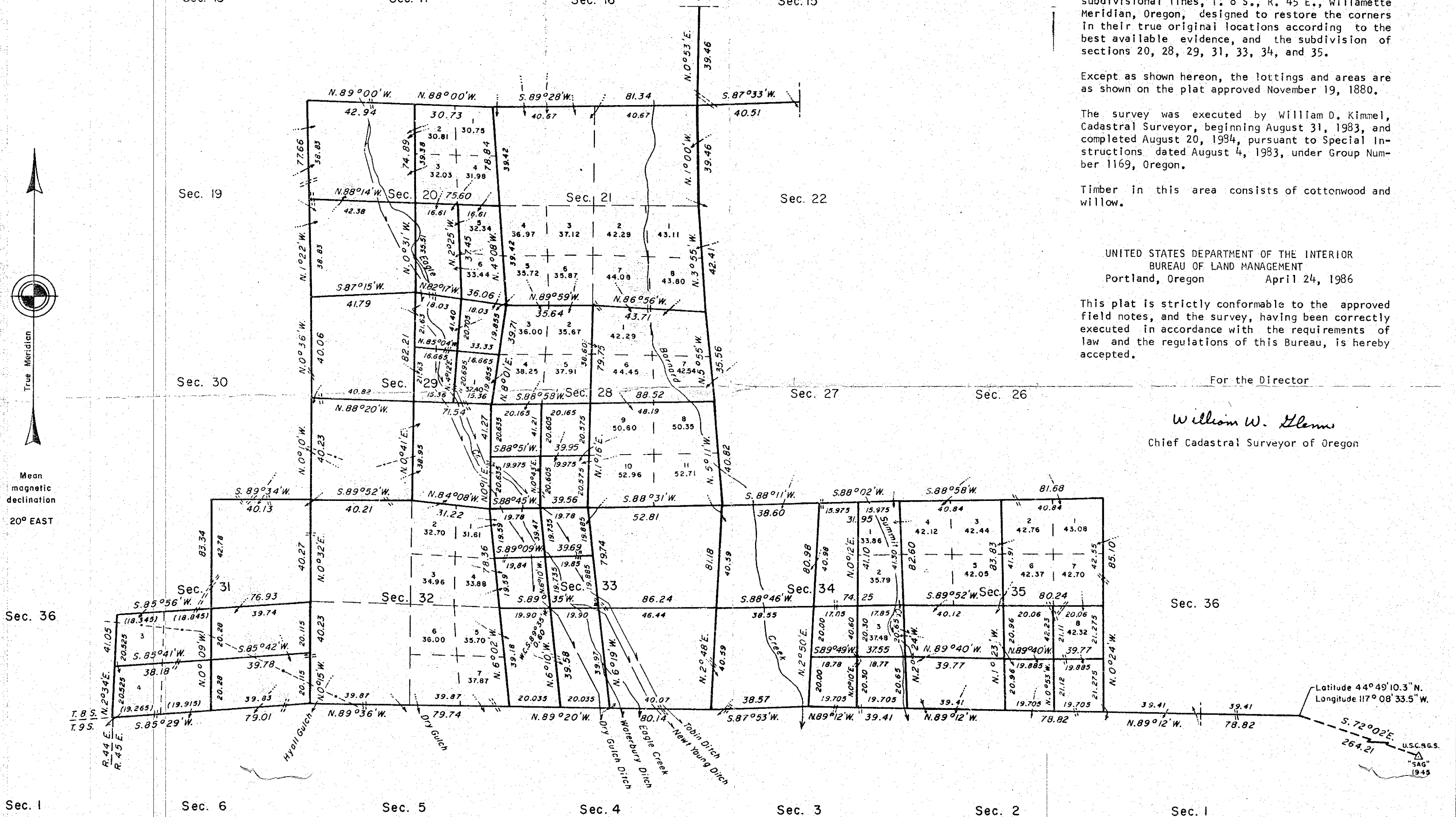
Timber in this area consists of cottonwood and willow.

UNITED STATES DEPARTMENT OF THE INTERIOR
BUREAU OF LAND MANAGEMENT
Portland, Oregon April 24, 1986

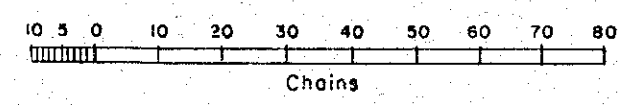
This plat is strictly conformable to the approved field notes, and the survey, having been correctly executed in accordance with the requirements of law and the regulations of this Bureau, is hereby accepted.

For the Director

William W. Glenn
Chief Cadastral Surveyor of Oregon



Latitude 44° 49' 10.3" N.
Longitude 117° 08' 33.5" W.



FILED June 26, 1986
BAKER COUNTY SURVEYOR
SURVEY NO. 8-45-74