

NARRATIVE TO ACCOMPANY RECORD OF SURVEY PLAT OF SECTIONS 22, 27, & 34, T7S, R45E, W.M., and SECTION 2, T8S, R45E, W.M., Sheet 1 of 1.

PURPOSE OF SURVEY

The survey was made to establish certain property corners and locate Forest Service boundary lines in Sections 22, 27, & 34, T7S, R45E, W.M., and Section 2, T8S, R45E, W.M.

SCOPE OF CONTRACT

The Forest Service Contract No. 53-04M3-4-2981 was to sub-divide Sections 34, T7S, R45E, W.M., and Section 2, T8S, R45E, W.M., from the established BLM and private brass cap corners. The S1 and R1 corners had to be restored by single proportionate measurements in accordance to the 1973 BLM survey manual, after a thorough and diligent search was made for the original GLO corner monument and accessories.

METHODS AND PROCEDURES FOR SURVEY

This survey was made with a Wild T-1 Theodolite and Model 112 AGA Geodimeter EDM and with a Model 3810A Hewlett-Packard EDM. All angles were determined by the method of direct angles to the right, and distances were measured with EDM's. All traverses were closed to the point of beginning or to a control point on a previously closed traverse.

The C1/4 and 1/16 corners were established by the methods of the 1973 BLM survey manual.

REGISTERED PROFESSIONAL LAND SURVEYOR
 Duane Fahringer
 OREGON
 JULY 13, 1984
 DUANE FAHRINGER
 211B

FILED May 9 1986

BAKER COUNTY SURVEYOR

SURVEY NO. 7-45-139

8-45-61

MONUMENTATION

See corresponding number in circle on map. Nailed bearing tree signs, warning signs and aluminum washers stamped "RLS 1928" to each tree. Set steel post with warning sign next to each corner. See "Certified Record of Land Corner Monumentation", Form R6-7100-57, on file in the office of the Baker County Surveyor for complete description of history, monument set, and accessories established. (Aluminum caps stamped as shown below.)

DEPENDENT RESURVEY AND PARTIAL SECTION SUBDIVISION

SECTIONS 22, 27 AND 34 T.7S., R.45E., WILLAMETTE MERIDIAN
 SECTION 2 T.8S., R.45E., WILLAMETTE MERIDIAN

NATURE AND PURPOSE OF SURVEY

This U. S. Forest Service administrative survey was made for the purpose of establishing the ground position of the legal boundary between National Forest Lands and those described in the current Land Status Records.

The survey required the partial subdivision of Section 34, T.7S., R.45E., Willamette Meridian, and Section 2, T.8S., R.45E., Willamette Meridian and the establishment of those minor subdivision corners which control the location of the adjoining lands.

HISTORY OF PREVIOUS SURVEYS

The original survey of T.7S., R.45E. was executed by W. B. Barr in 1882 and was approved March 13, 1883.

The West 1/4 corner and North 1/4 corner of Section 34 were re-monumented by the Bureau of Land Management in 1975.

The Northeast, Southeast, East 1/4, and the South 1/4 corners of Section 34, used in this survey were re-monumented by Victor M. Molind R.L.S. No. 934 in 1980. Victor Molind also set the N1/16 S1/34 and the E1/16 S4/3 in the same survey in 1980.

The North 1/4 corner of Section 27 and the C-S1/16 of Section 22 used in this survey, were re-monumented by Duane Griffith, R.L.S. No. 644 in 1982.

The original survey of the township lines of T.8S., R.45E. was executed by Barin Walden in 1873. The subdivision lines of T.8S. were originally surveyed by W. B. Barr in 1880 and approved on November 19, 1880.

The Southeast corner, Southwest corner, Northwest corner, West 1/4 corner, and the North 1/4 corner of Section 2 were re-monumented by Victor M. Molind, R.L.S. No. 934 in 1980. Victor Molind also set the S1/16 S1/2, the N1/16 S1/2, and the W1/16 S1/2 of Section 2 in the same survey in 1980.

The Northeast corner of Section 2 was re-monumented by James D. Hanley, the Baker County Surveyor, R.L.S. No. 1208 in 1979.

BASIS OF BEARING

Bearings are oriented to a solar observation taken along the control survey line.

METHOD OF SURVEY

This survey was made with a Wild T-1 Theodolite and Model 112 AGA Geodimeter EDM and with a Model 3810A Hewlett-Packard EDM. All angles were determined by the method of direct angles to the right, and distances measured with EDM's. All traverses were closed to the point of beginning or to a control point on a previously closed traverse.

NOTES

Corner perpetuation and filling forms have been filed with the Baker County Recorder in Baker, Oregon.
 See accompanying sheet for Narrative of Survey.

SURVEYORS CERTIFICATE

I, Clyde Porter, a registered professional land surveyor in the State of Oregon, No. 1928, and Duane Fahringer, a registered professional land surveyor in the State of Oregon, No. 211B, hereby certify that this plat and notes hereon, or attached, are a correct representation of a survey performed by Duane Fahringer, and under our direct supervision during June, July, and August 1984 and June and July 1985 at the request of the U. S. Department of Agriculture Forest Service, in accordance with the statutes of the State of Oregon and with the articles of the contract.

Duane Fahringer, P.L.S.
 Oregon License No. 211B

REGISTERED PROFESSIONAL LAND SURVEYOR
 Duane Fahringer
 OREGON
 JULY 13, 1984
 DUANE FAHRINGER
 211B

U. S. DEPARTMENT OF AGRICULTURE
 FOREST SERVICE
 REGION 6 WALLOWA-WHITMAN NATIONAL FOREST

GOOSE CADASTRAL SURVEY

Contract No. 53-04M3-4-2981

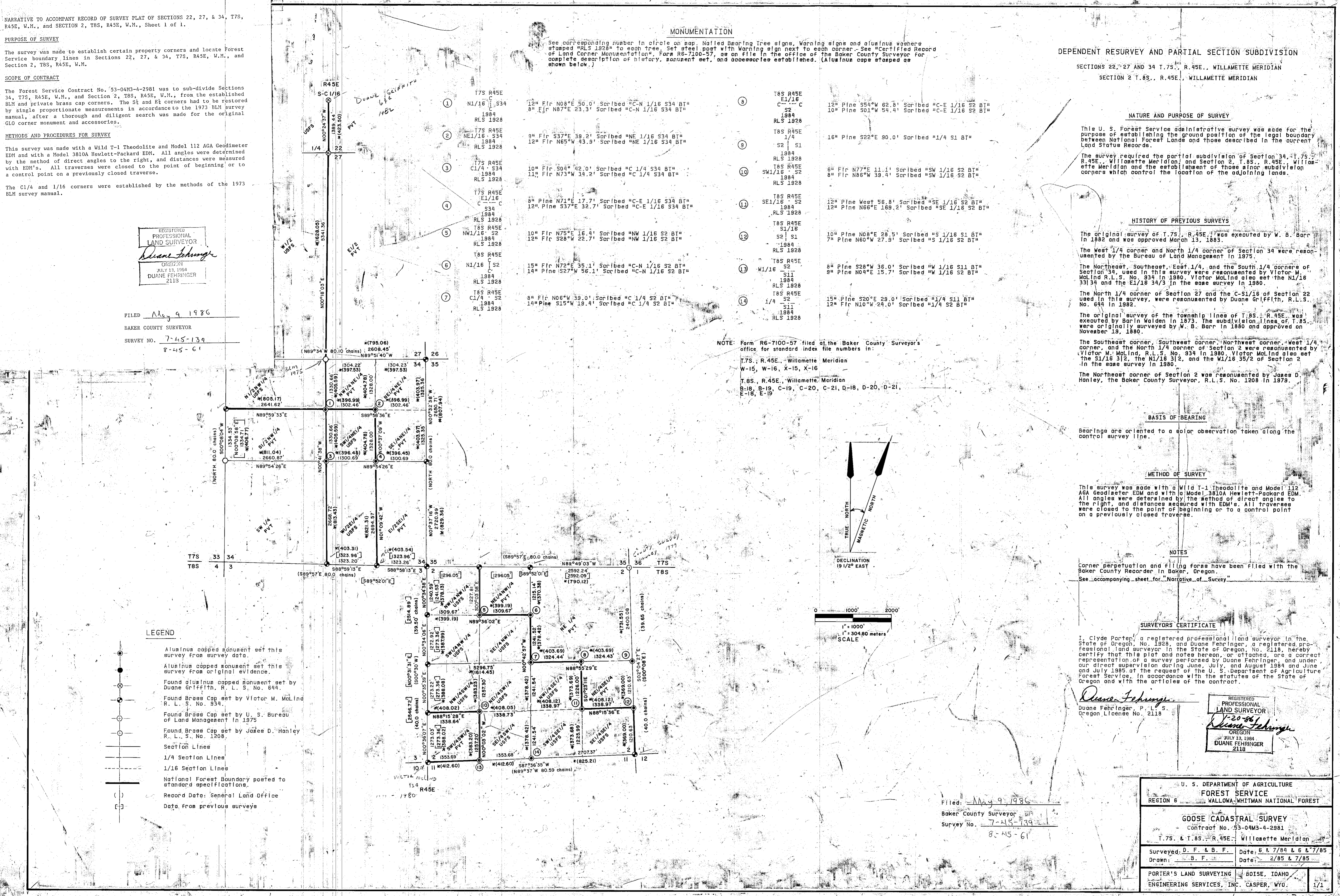
T.7S. & T.8S., R.45E., Willamette Meridian

Surveyed by D. F. & B. F. Date: 6 & 7/84 & 6 & 7/85

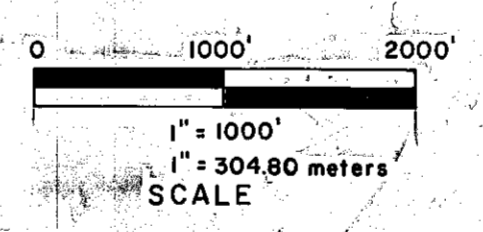
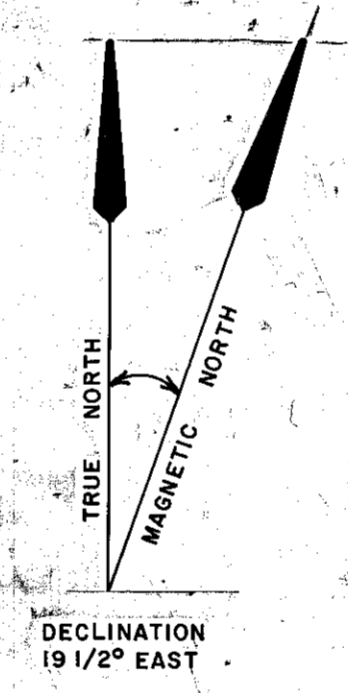
Drawn by B. F. Date: 2/85 & 7/85

PORTER'S LAND SURVEYING Boise, IDAHO

ENGINEERING SERVICES, INC. CASPER, WYO. 1/1



NOTE: Form R6-7100-57 filed at the Baker County Surveyor's office for standard index file numbers in:
 T.7S., R.45E., Willamette Meridian
 W-15, W-16, X-15, X-16
 T.8S., R.45E., Willamette Meridian
 B-18, B-19, C-19, C-20, C-21, D-18, D-20, D-21,
 E-18, E-19



LEGEND

- Aluminum capped monument set this survey from survey data.
- Aluminum capped monument set this survey from original evidence.
- ⊗ Found aluminum capped monument set by Duane Griffith, R. L. S. No. 644.
- ⊙ Found Brass Cap set by Victor M. Molind R. L. S. No. 934.
- ⊕ Found Brass Cap set by U. S. Bureau of Land Management in 1975.
- ⊖ Found Brass Cap set by James D. Hanley R. L. S. No. 1208.
- Section Lines
- 1/4 Section Lines
- - - 1/16 Section Lines
- National Forest Boundary posted to standard specifications.
- () Record Data: General Land Office
- [] Data from previous surveys

7-45-139
 8-45-61