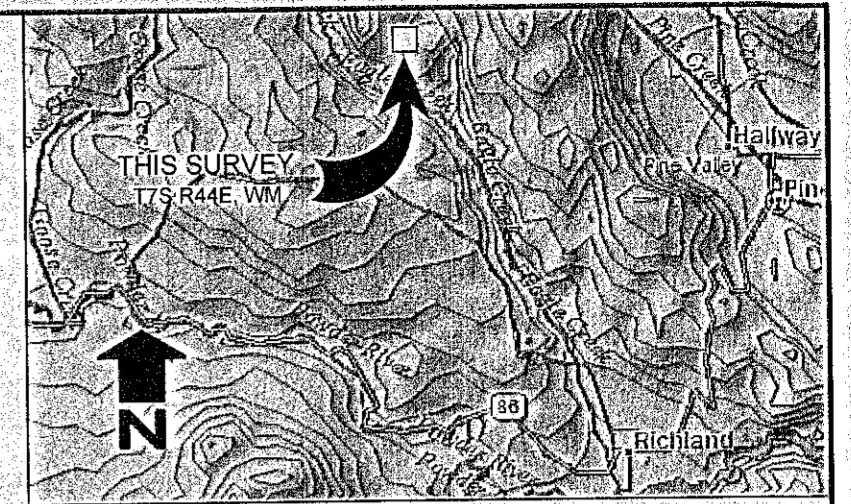


SHEET INDEX

Sheet 1: Section Subdivision Map and Legend
 Sheet 2: Post and Mark, Ownership, Topographic Map, Corner Reference Nos., Notes and Cabin Detail
 Sheet 3: Narrative, Reference Material, Corner Records, Certificate of Survey and FS Acceptance
 Sheets 4-7: Corner Records
 Sheet 8: Corner Records and Corner Notes

Record of Survey
 Subdivision of Sec. 25, 26, 35 & 36
 T7S, R44E, WM, OR
 Holcomb Creek Resurvey, WWNF

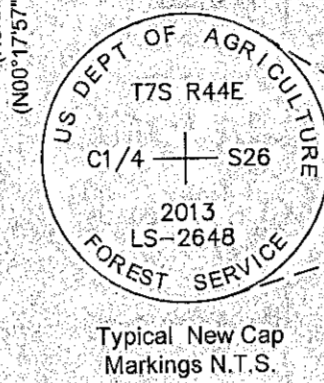


VICINITY MAP

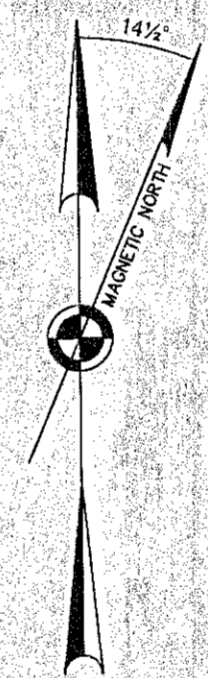
DeLorme XMap 6.0
 Scale: 1" = ± 5 miles

LEGEND

- ⊗ Cadastral monument of record recovered and accepted this survey. See individual Corner Record for description of found condition and any refurbishment.
- ⊙ Reestablished position in compliance with the BLM Manual of Survey Instructions, at proportionate positions and C1/4 intersection points. Set a 3/4" alum. cap on 2 1/2" diam. by 30" long alum. pipe, with clear DEEP-1 magnet at base. See individual Corner Record for description of corner.
- ⊗ Cadastral monument of record (Survey No. 7-45-147), not recovered this survey.
- () Record informational calls from GLO Contract No. 503, approved March 21, 1885.
- () Record informational calls from Survey No. 7-45-19, by James H. Hambleton, LS 645, filed Sept. 26, 1878.
- () Record informational calls from Survey No. 8-44-64, by Carl E. Sundet, LS 1664, filed Aug. 22, 1983.
- () Record informational calls from Survey No. 7-44-77 (CANCELLED), by Barry B. Barbour, LS 1051, filed Nov. 7, 1985.
- () Record informational calls from Survey Nos. 8-44-110 and 8-44-111, by Ronald H. Schulson, LS 1658, filed July 31, 1986.
- () Record informational calls from BLM Group No. 1554, approved April 21, 1992.
- () Record informational calls from Survey No. 7-45-147, by Thomas D. Fisk, LS 2446, filed June 11, 1993.



Typical New Cap Markings N.T.S.



National Geophysical Data Center
 2013

- ⊙ Corner Record Reference No. (Sheet 2)
- NFSL — National Forest System Lands (Sheet 2)
- PVT — Private Lands (Sheet 2)
- Section Line
- Subdivision Line
- Post and Mark: Maintenance Line, added steel "T" fence posts and USFS signs as needed at intervals of 200 feet or intervisible, and added blazes with red paint, quarter blazes on USFS and face blazes on private. (Sheet 2)
- Post and Mark: Survey Line, posted line with steel "T" fence posts and USFS signs at intervals of 200 feet or intervisible and blazed trees with red paint; quarter blazes on USFS and face blazes on private. Through corners, added ±5 ft. and ±50 ft. posts, per USFS contract specs. (Sheet 2)
- Local Access Dirt/Gravel Road (Sheet 2)
- X — Barbed wire fence (Sheet 2, Detail A)

GRAPHIC SCALE



(IN FEET / 1 foot = 0.3048 meter)
 1 inch = 800 ft.

REGISTERED
 PROFESSIONAL
 LAND SURVEYOR
Ron Walter
 OREGON
 JANUARY 18, 1994
 RON C. WALTER
 2648
 Renewal Date: June 30, 2014

Record of Survey
 Wallowa-Whitman National Forest

LOCATED WITHIN
 Secs. 25, 26, 35 and 36
 Township 7 South, Range 44 East
 Willamette Meridian, Baker County, Oregon

Wallowa Associates
 303 S.E. Alamo Street
 Enterprise, Oregon 97828
 (541) 426-9049

SCALE 1" = 800'	SHEET No. 1 of 8	DATE OF SURVEY Beginning May 7, 2013 Ending August 7, 2013
DRAWN BY RCW/KLP/BJM	CHECKED RCW	PROJECT No. WA 1091-06/2318
DATE 11/2013		

FILED Nov. 25, 2013
 BAKER COUNTY SURVEYOR
 SURVEY NO. 7-44-264
8-44-159
7-45-167
8-45-148

