

CERTIFIED RECORD OF LAND CORNER MONUMENTATION

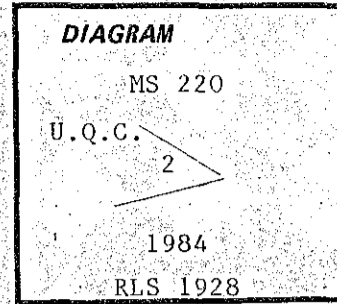
History of original corner establishment:

Original survey executed in Sept. 1890 by Emil F. Voigt under instructions dated Aug. 29, 1980.

Set a post 4½' long, 4" square, 12" in ground with mound of stone marked "Cor. 2 UQC S220" from which:

A point of rock in place 4'x2½' base, 3' above ground bears N6½°E 114' marked with a cross and "II"

A point of rock in place 4'x2' base, 2' above ground bears, N18½E 168' marked with a cross and "II"



Description of corner evidence found:

Found original rock pile

Found 2 original bearing objects:

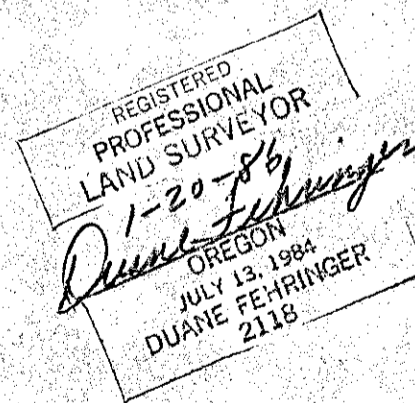
4' x 2½' rock 3' above ground with "X" N.6½°E. 114.0'

4' x 2' rock 2' above ground with "X" N.18½°E. 168.0'

Description of monument and accessories | established to perpetuate the original location of this corner:

Set 30" long aluminum pipe with 3¼" aluminum cap marked as shown above, 6" above ground in rock collar. Steel post with signs 54-9 & 54-2 next to cap.

Painted original bearing objects red.



Office of..... County of.....
State of..... I hereby certify that the within instrument was filed in this office
for record on the..... day of....., 19.....

(COUNTY OFFICIAL)

(DEPUTY)

Form R6-7100-57 (9/71)

☆ U.S. GOVERNMENT PRINTING OFFICE - 1983-793-276

FILED May 9, 1986
BAKER COUNTY SURVEYOR
SURVEY NO. 8-44-72