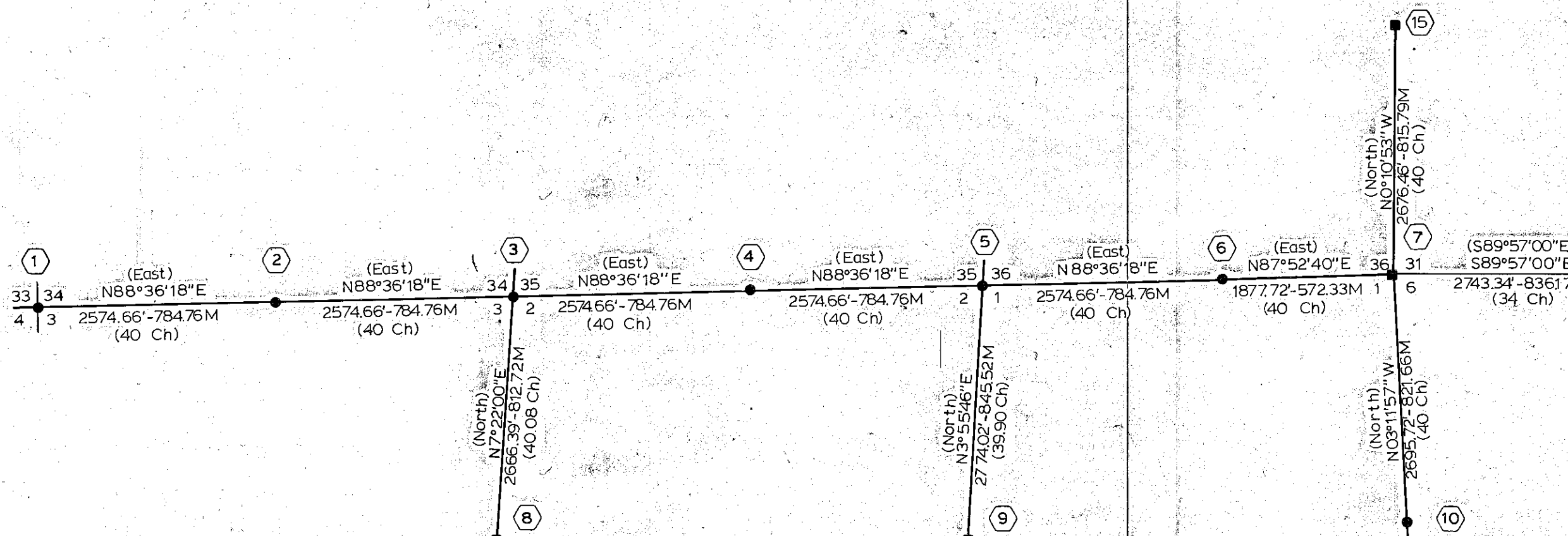


Map of Survey in Sections 1, 2, 3, 12 and 13, T.8 S. R.44 E., W.M. Baker County, Oregon

Forshey Cadastral Survey

T. 7 S.
T. 8 S.

Little Eagle Creek



Magnetic Declination
20° East

① Fd: 12" x 10" x 6" scribed stone
Unrecorded BT's
30" DFBT. N66 1/2°E - 29.4 ft.
30" PPBT. dead, down & moved
Rotten stump S89°E - 53.6 ft.
Set: AP 26" in ground
Comp. decl. 19 3/4° East
Ref: 15" PPBT. N18°E - 83.5 ft.
7" PPBT. S06°E - 71.4 ft.
13" PPBT. S36°W - 66.4 ft.
7" DFBT. N61°W - 77.7 ft.

② Fd: No evidence of original stone
Set by S.P.M. Comp. decl. 19 3/4° East
Set: AP 8" in ground in m.o.s., as
witness corner, 7" west on line.
True corner position falls on large
boulder. Chisled X and painted red
circle at true corner position
Ref: 9" DFBT. N11 1/2°E - 17.0 ft.
13" PPBT. S65°E - 50.9 ft.

③ Fd: No evidence of original stone
Set by S.P.M.
Set: AP 12" in ground in m.o.s.
Comp. decl. 19 3/4° East
Ref: 20" PPBT. S79°E - 14.4 ft.
3 ft. x 2 ft. m.o.s. S28 1/4°W - 37.4 ft.
3 ft. x 2 ft. m.o.s. N46°W - 32.3 ft.
3 ft. x 2 ft. m.o.s. N4 3/4°E - 39.1 ft.

④ Fd: No evidence of original stone
Set by S.P.M.
Set: AP 28" in ground in m.o.s.
Comp. decl. 19 3/4° East
Ref: 3 ft. x 2 ft. m.o.s. S55°E - 10.1 ft.
3 ft. x 2 ft. m.o.s. N53°W - 7.6 ft.

⑤ Fd: No evidence of original stone
Set by S.P.M.
Set: AP 22" in ground in m.o.s.
Comp. decl. 19 3/4° East
Ref: 13" PPBT. N44 1/2°W - 51.0 ft.
15" PPBT. N43 1/2°E - 64.1 ft.
10" PPBT. S34°E - 85.1 ft.
9" PPBT. S70 1/2°W - 71.0 ft.

⑥ Fd: 14" x 8" x 6" scribed stone in m.o.s.
Set: AP 24" in ground in m.o.s.
Comp. decl. 20 3/4° East
Ref: 5" PPBT. N68.5°E - 13.5 ft.
11" PPBT. S22°E - 27.4 ft.

⑦ Fd: Standard BLM brass cap
10" PPBT. S84 1/2°W - 35.4 lks
15" PPBT. N45°W - 27.4 lks

⑧ Fd: Standard BLM brass cap
14" PPBT. S52°E - 27 1/2 lks
36" PPBT. snag N40 1/2°E - 46 lks
7" DFBT. N51 1/2°W - 36 lks
Old stump N43°W - 38 1/2 lks

⑨ Fd: Standard BLM brass cap
13" DFBT. N52 1/2°W - 28.0 ft.
36" DFBT. S34°E - 6.4 ft.
DFBT. snag S27°E - 28.0 ft.
Ref: 5 1/2" DFBT. N58°E - 25.5 ft.
Comp. decl. 20 7/5° East

⑩ Fd: No evidence of original stone
Set by S.P.M.
Set: AP 15" in ground in m.o.s.
Comp. decl. 19 3/4° East
Ref: 21" PPBT. S75°W - 120.0 ft.
34" PPBT. N73°E - 206.2 ft.

⑪ Fd: No evidence of original stone
Set by S.P.M.
Set: AP 20" in ground in m.o.s.
Comp. decl. 19 3/4° East
Ref: 9" DFBT. N01 1/2°W - 9.4 ft.
7" DFBT. S45°W - 13.3 ft.
6" DFBT. S52°E - 2.9 ft.
6" DFBT. N71°E - 18.2 ft.

⑫ Fd: No evidence of original stone
Set by S.P.M.
Set: AP 22" in ground in m.o.s.
Comp. decl. 19 3/4° East
Ref: 13" PPBT. N50 1/2°W - 109.3 ft.
17" PPBT. N86°E - 137.2 ft.

⑬ Fd: 15" x 11" x 6" marked stone
Set: AP 6" in ground in m.o.s.
Comp. decl. 20 3/4° East
Ref: 3 1/2 ft. x 2 ft. m.o.s. N23°W - 10.4 ft.
3 ft. x 2 ft. m.o.s. N62 1/2°E - 7.2 ft.
4 ft. x 2 ft. m.o.s. S17°E - 15.4 ft.
4 ft. x 2 ft. m.o.s. S55°W - 10.4 ft.

⑭ Fd: 1980 County Surveyor brass cap
in m.o.s. set by RLS 1206

⑮ Fd: Standard BLM brass cap
10" PPBT. S71 1/2°E 61 1/2 lks
12" PPBT. N12°W 41 lks

Note

Bearings based on solar observation.

All bearing trees, monuments and mounds of stone, marked or raised as per BLM Manual of Instructions, 1973, with the addition of a) a red band painted on smoothed bark at breast height and a brass tag stamped RLS 1664 placed in BT blaze on bearing trees and b) RLS 1664 stamped on new monuments.

U.S.F.S. Forms 7100-57, Certified Record of Land Corner Monumentation, on file at Baker County for all corners monumented this survey and for the 14 corner 2 | 1 at which a new BT was referenced.

History

The original survey of the north and east boundary of T.8S.R.44E. was executed by N. Walden under contract no. 198 dated July 15, 1873.

The subdivision of T.8S.R.44E. was executed by W. Barr under contract no. 388 dated May 7, 1881.

Perpetuation and monumentation of some of the corners of T.8S.R.44E. were performed by the BLM in 1974.

The section corner common to sections 13, 18, 19 and 24, T.8S.R.44 & 45E. was remonumented by RLS 1206 in 1980.

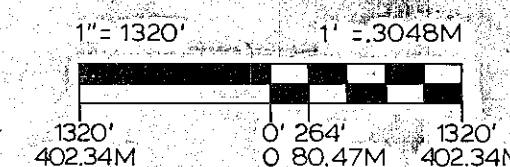
REGISTERED
PROFESSIONAL
LAND SURVEYOR

OREGON
JULY 14, 1978
CARL E. SUNDET
1664

Legend

- AP - 2 1/2" x 30" aluminum pipe with 3/4" aluminum cap
- - Monuments set this survey
- - Monuments found this survey
- () - Record bearing and/or distance
- SPM - Single Proportionate Measurement
- Fd - found
- Ref - reference
- M - meters
- Ch - chains
- lks - links
- BT - bearing tree
- PP - ponderosa pine
- Comp. decl. - compass declination
- mos - mound of stone
- DF - douglas fir

Scale



"I, Carl E. Sundet, a registered land surveyor in the State of Oregon, hereby certify that this plat and the notes hereon, or attached, are a correct representation of a survey I performed in 1982-1983, for the U.S. Forest Service, in accordance with the statutes of the State of Oregon and the articles of my contract."

Carl E. Sundet
Registered Land Surveyor
Oregon License No. 1664

FILED Aug. 22, 1983

BAKER COUNTY SURVEYOR
SURVEY NO. 8-44-64

Surveyed for: U.S. Forest Service
Contract no. 53-04M3-1-2667N
Surveyed by: SUNDET AND ASSOCIATES
P.O. Box 1228
Lakeview, Oregon 97630
(503) 947-3293
Date: 1982-1983
Drawing no. 248