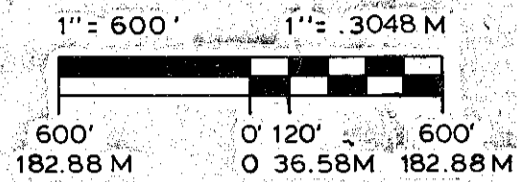


Map of Survey in Section 4, T.8 S. R.44E, W.M. Baker County, Oregon

Forshey Cadastral Survey

Scale



Magnetic Declination
20° East

Fd: No evidence of original stone
Set by single proportionate measurement
Set: AP 24" in ground
Comp. decl. 19 3/4° East
Ref: 11" PPBT. N69 1/2°W - 41.4 ft.
9" PPBT. S59 1/2°E - 67.8 ft.

Fd: No evidence of original stone
Unrecorded BT's
24" DF.BT. S58°E - 42.2 ft.
27" DF.BT. N83°W - 65.8 ft.
Set by unrecorded BT's and call
to Sparta ditch

Set: AP 12" in ground in m.o.s.
Comp. decl. 19 1/2° East
Ref: 12" PPBT. N53°W - 54.6 ft.
9" PPBT. N28 1/2°E - 47.2 ft.
13" PPBT. S80 3/4°W - 82.4 ft.
17" PPBT. S17°E - 74.0 ft.

Fd: 12" x 10" x 6" stone
Unrecorded BT's
30" DF.BT. N66 1/2°E - 29.4 ft.
Rotten stump S89°E - 53.6 ft.
30" PPBT. dead, down & moved
Set: AP 26" in ground Comp. decl. 19 3/4° East
Ref: 7" DF.BT. N61°W - 77.7 ft.
15" PPBT. N18°E - 83.5 ft.
13" PPBT. S36°W - 66.4 ft.
7" PPBT. S06 1/2°E - 71.4 ft.

Fd: BLM brass cap
13" PPBT. N63°W - 91ks
11" PPBT. S79°E - 171ks
31" PPBT. stump S28°E - 951ks
20" PPBT. stump S54°W - 551ks
Comp. decl. 20° East

Set: AP 26" in ground
Comp. decl. 19 3/4° East
Ref: 13" PPBT. N46°E - 361 ft.
7" PPBT. N08 3/4°W - 61.8 ft.

Set: AP 26" in ground in m.o.s.
Comp. decl. 19 3/4° East
Ref: 7" PPBT. S04 1/2°E - 25.9 ft.
8" PPBT. N39 1/2°E - 33.2 ft.

Set: AP 26" in ground in m.o.s.
Comp. decl. 19 3/4° East
Ref: 7" DF.BT. S25°W - 32.2 ft.
11" DF.BT. N22 1/4°E - 31.6 ft.

Fd: 10" x 10" x 6" stone with 1/4" on west face
a pine root wad & stump hole N15°W - 185 lks
a tamarack rotted stump S76°E - 61 lks
Set: AP 24" in ground in m.o.s. Comp. decl. 20.75° East
Ref: 17 1/2" PPBT. N68.5°W - 49.5 ft.
18" PPBT. N20.5°E - 84.4 ft.

Fd: BLM brass cap
14" PPBT. N43 1/2°W - 36 lks
43" PPBT. S12°W - 108 lks
8" PPBT. S2°E - 20 lks
26" PPBT. N79 1/2°E - 116 lks
37" PPBT. stump N18°W - 160 lks
Root hole S26 1/2°E - 56 lks
Ref: 12" PPBT. N31°W - 50.7 ft.

(39.83 Ch)
N89°55'20"E
2635.65' - 805.35M

Fd: No evidence of original stake or bearing trees
Set by single proportionate measurement
Set: AP 24" in ground in m.o.s.
Comp. decl. 20° East
Ref: 13" PPBT. S68°W - 38.3 ft.
11" DF.BT. N83°E - 47.3 ft.

Fd: BLM brass cap
23" PPBT. N31°W - 163 lks
12" PPBT. N40°W - 76 lks
14" PPBT. S32°W - 48 lks
19" PPBT. N22°E - 38 lks
14" PPBT. S78°E - 48 lks
Decayed stump N23°30'E - 75 lks
Root hole S08 1/2°E - 103 lks
Root hole S16°W - 79 lks
Comp. decl. 21°20' East

Legend

- A.P. - 2 1/2" x 30" aluminum pipe with 3/4" aluminum cap
- - monuments set this survey
- - found standard BLM brass cap
- () - record bearing and/or distance
- Fd - found
- M - meters
- lks - links
- Ref - reference
- PVT - private
- USFS - U.S. Forest Service
- //// - property line posted
- BT - bearing tree
- PP - Ponderosa pine
- DF - Douglas fir
- Ch - chains
- m.o.s. - mound of stone
- Comp decl - compass declination

Note

Bearings based on solar observation.
All bearing trees and monuments marked as per BLM Manual of instructions, 1973, with the addition of: a) a red band painted on smoothed bark at breast height and a brass tag stamped RLS 1664 placed in BT blaze on bearing trees and b) all monuments have township, range and RLS 1664 stamped on them.
USFS. Form 7100-57, Certified Record of Land Corner Monumentation, on file at Baker County for all corners visited this survey.

History

The survey of the north boundary of T.8 S. R.44 E. was executed by N. Walden in 1873 under contract no. 198. The subdivision of T.8 S. R.44 E. was executed by W. Barr in 1881 under contract no. 388. Subsequently some corners have been re-monumented and perpetuated by the BLM.

"I, Carl E. Sundet, a registered land surveyor in the State of Oregon, hereby certify that this plat and the notes hereon, or attached, are a correct representation of a survey I performed in 1982-83, for the U.S. Forest Service, in accordance with the statutes of the State of Oregon and the articles of my contract."

Carl E. Sundet
Carl E. Sundet
Registered Land Surveyor
Oregon License 1664

REGISTERED
PROFESSIONAL
LAND SURVEYOR

Carl E. Sundet
OREGON
JULY 14, 1978
CARL E. SUNDET
1564

FILED July 28, 1983
BAKER COUNTY SURVEYOR
SURVEY NO. 8-44-63

Surveyed for : U.S. Forest Service
Contract No. 53-04M3-1-2667N
Surveyed by : SUNDET AND ASSOCIATES
P.O. Box 1228
Lakeview, Oregon
Ph. No. 503-947-3293
Date : 1982-1983
Drawing no. 243

(1) Set: AP 24" in ground
Comp. decl. 19 3/4° East
Ref: 6" DF.BT. S50°W - 11.0 ft.
8" PPBT. N87°E - 20.6 ft.

(2) Set: AP 25" in ground in m.o.s.
Comp. decl. 19 3/4° East
Ref: 10" PPBT. S37 1/2°W - 60.2 ft.
7" PPBT. N88 1/2°W - 98.6 ft.