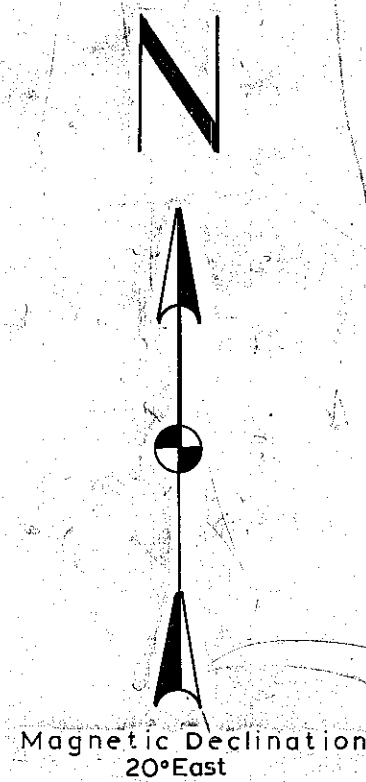
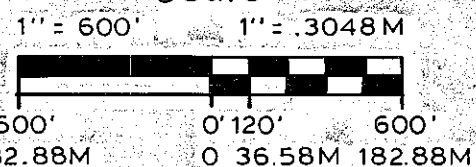


Map of Survey in Section 6, T.8 S. R.44E, W.M. Baker County, Oregon

Forshey Cadastral Survey

Scale



T.7 S.
T.8 S.

Legend

- AP - 2 1/2" x 30" aluminum pipe with 3 1/4" aluminum cap
- - monuments set this survey
- - found BLM brass cap, 1974
- () - record bearing and/or distance
- Fd - found
- M - meters
- lks - links
- Ref - reference
- PVT - private
- USFS - U.S. Forest Service
- property line posted
- BT - bearing tree
- PP - ponderosa pine
- DF - douglas fir
- Ch - chains
- Comp. decl. - compass declination
- m.o.s. - mound of stone

Note

Bearings based on solar observation.
All bearing trees, monuments, and mounds of stone, marked or raised as per BLM Manual of instructions, 1973, with the addition of a) a red band painted on smoothed bark at breast height and a brass tag stamped RLS 1664 placed in BT blaze on bearing trees, and b) RLS 1664 stamped on new monuments.
USFS. Forms 7100-57, Certified Record of Land Corner Monumentation, on file at Baker County, for all corners visited this survey.

History

The original survey of the North and West boundaries of T.8S. R.44E. were executed by N. Walden under contract no. 198, dated 1873.
A retracement of the north boundary and the original subdivisions of the interiors were executed by W. Barr under contract no. 388 dated 1881.
The SE section corner was remonumented by the BLM in 1974.
See narrative for additional information.

REGISTERED
PROFESSIONAL
LAND SURVEYOR

Carl E. Sundet
OREGON
JULY 14, 1978
CARL E. SUNDET
1664

I, Carl E. Sundet, a registered land surveyor in the State of Oregon, hereby certify that this plat and the notes hereon, or attached, are a correct representation of a survey I performed in 1981-82, for the U.S. Forest Service, in accordance with the statutes of the State of Oregon and the articles of my contract.

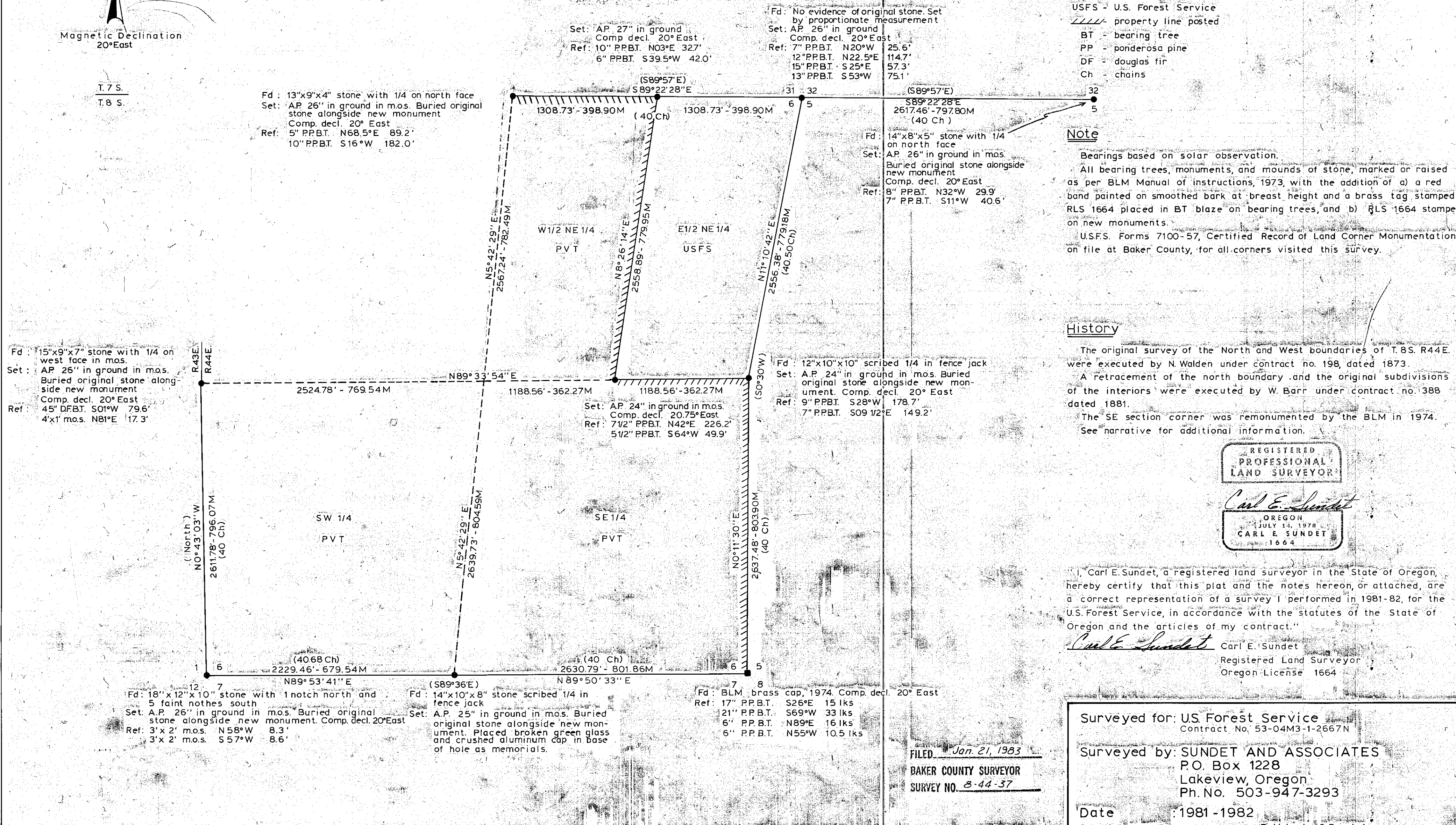
Carl E. Sundet Carl E. Sundet
Registered Land Surveyor
Oregon License 1664

Surveyed for: US Forest Service
Contract No. 53-04M3-1-2667N

Surveyed by: SUNDET AND ASSOCIATES
P.O. Box 1228
Lakeview, Oregon
Ph. No. 503-947-3293

Date: 1981-1982

Drawing No. 217 Field books 2,3 and 4



Fd: 13"x9"x4" stone with 1/4 on north face
Set: AP 26" in ground in m.o.s. Buried original stone alongside new monument
Comp. decl. 20° East
Ref: 5" PPBT. N68.5°E 89.2'
10" PPBT. S16°W 182.0'

Set: AP 27" in ground
Comp. decl. 20° East
Ref: 10" PPBT. N03°E 327'
6" PPBT. S39.5°W 42.0'

Fd: No evidence of original stone. Set by proportionate measurement
Set: AP 26" in ground
Comp. decl. 20° East
Ref: 7" PPBT. N20°W 25.6'
12" PPBT. N22.5°E 114.7'
15" PPBT. S25°E 57.3'
13" PPBT. S53°W 75.1'

Fd: 14"x8"x5" stone with 1/4 on north face
Set: AP 26" in ground in m.o.s. Buried original stone alongside new monument
Comp. decl. 20° East
Ref: 8" PPBT. N32°W 29.9'
7" PPBT. S11°W 40.6'

Fd: 15"x9"x7" stone with 1/4 on west face in m.o.s.
Set: AP 26" in ground in m.o.s. Buried original stone alongside new monument
Comp. decl. 20° East
Ref: 45" DFBT. S01°W 79.6'
4"x1" m.o.s. N81°E 17.3'

Set: AP 24" in ground in m.o.s.
Comp. decl. 20.75° East
Ref: 7 1/2" PPBT. N42°E 226.2'
5 1/2" PPBT. S64°W 49.9'

Fd: 12"x10"x10" scribed 1/4 in fence jack
Set: AP 24" in ground in m.o.s. Buried original stone alongside new monument.
Comp. decl. 20° East
Ref: 9" PPBT. S28°W 178.7'
7" PPBT. S09 1/2°E 149.2'

Fd: 18"x12"x10" stone with 1 notch north and 5 faint nothes south
Set: A.P. 26" in ground in m.o.s. Buried original stone alongside new monument.
Ref: 3'x2' m.o.s. N58°W 8.3'
3'x2' m.o.s. S57°W 8.6'

Fd: 14"x10"x8" stone scribed 1/4 in fence jack
Set: A.P. 25" in ground in m.o.s. Buried original stone alongside new monument. Placed broken green glass and crushed aluminum cap in base of hole as memorials.

Fd: BLM brass cap, 1974. Comp. decl. 20° East
Ref: 17" PPBT. S26°E 15 lks
21" PPBT. S69°W 33 lks
6" PPBT. N89°E 16 lks
6" PPBT. N55°W 10.5 lks

FILED Jan 21, 1983
BAKER COUNTY SURVEYOR
SURVEY NO. 8-44-37