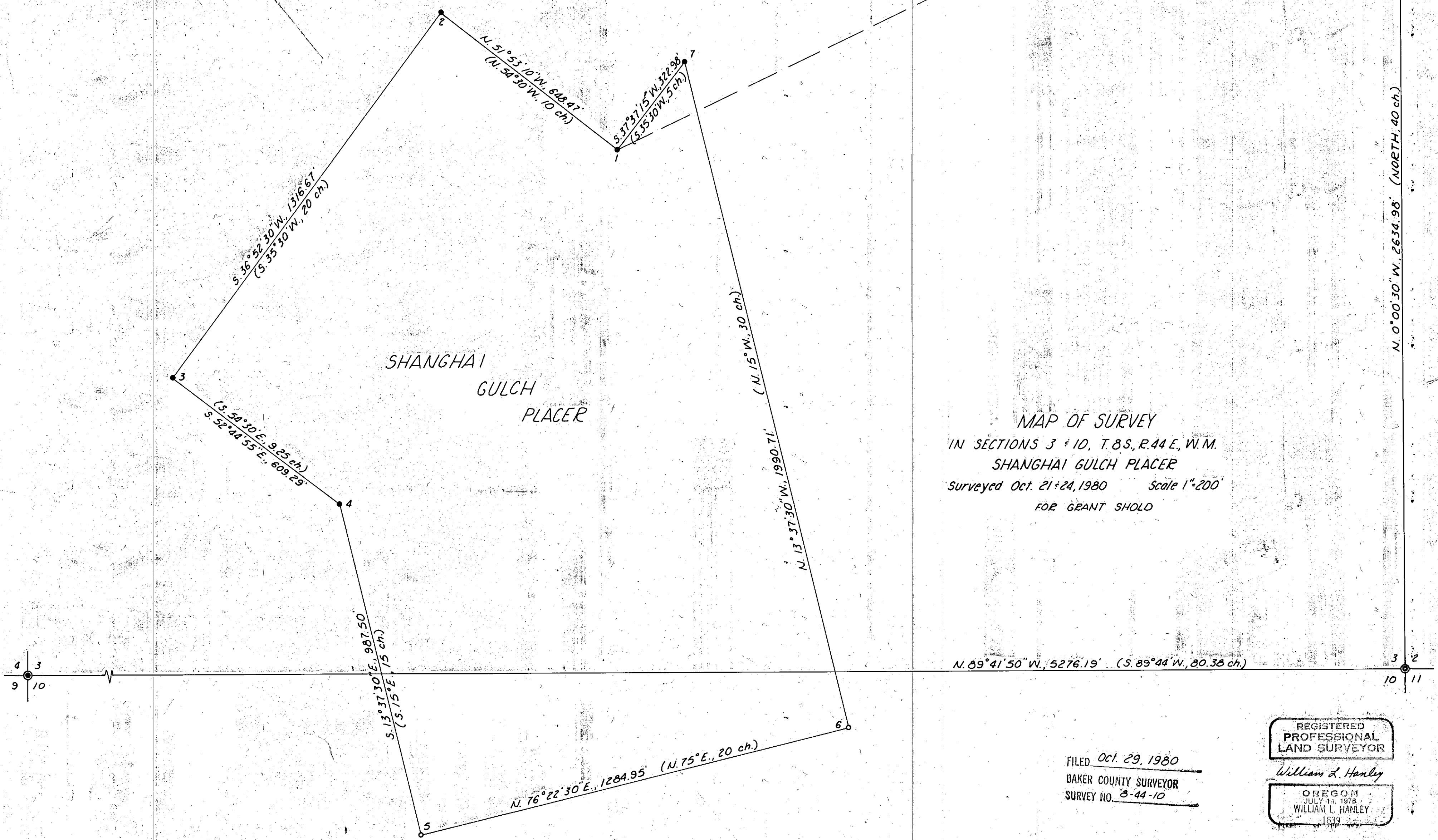


LEGEND

- Set $\frac{3}{8}$ " x 30" rebar at recovered original corner position.
- Set $\frac{3}{8}$ " x 30" rebar at calculated corner position.
- ⊙ Found BLM brass cap.
- () G.L.O. record bearing and distance.

Narrative by attachment

Meridian by Solar Obs



MAP OF SURVEY
 IN SECTIONS 3 & 10, T.8S., R.44E., W.M.
 SHANGHAI GULCH PLACER
 Surveyed Oct. 21 & 24, 1980 Scale 1"=200'
 FOR GRANT SHOLD

FILED Oct. 29, 1980
 BAKER COUNTY SURVEYOR
 SURVEY NO. 8-44-10

REGISTERED
 PROFESSIONAL
 LAND SURVEYOR
William L. Hanley
 OREGON
 JULY 11, 1978
 WILLIAM L. HANLEY
 1939