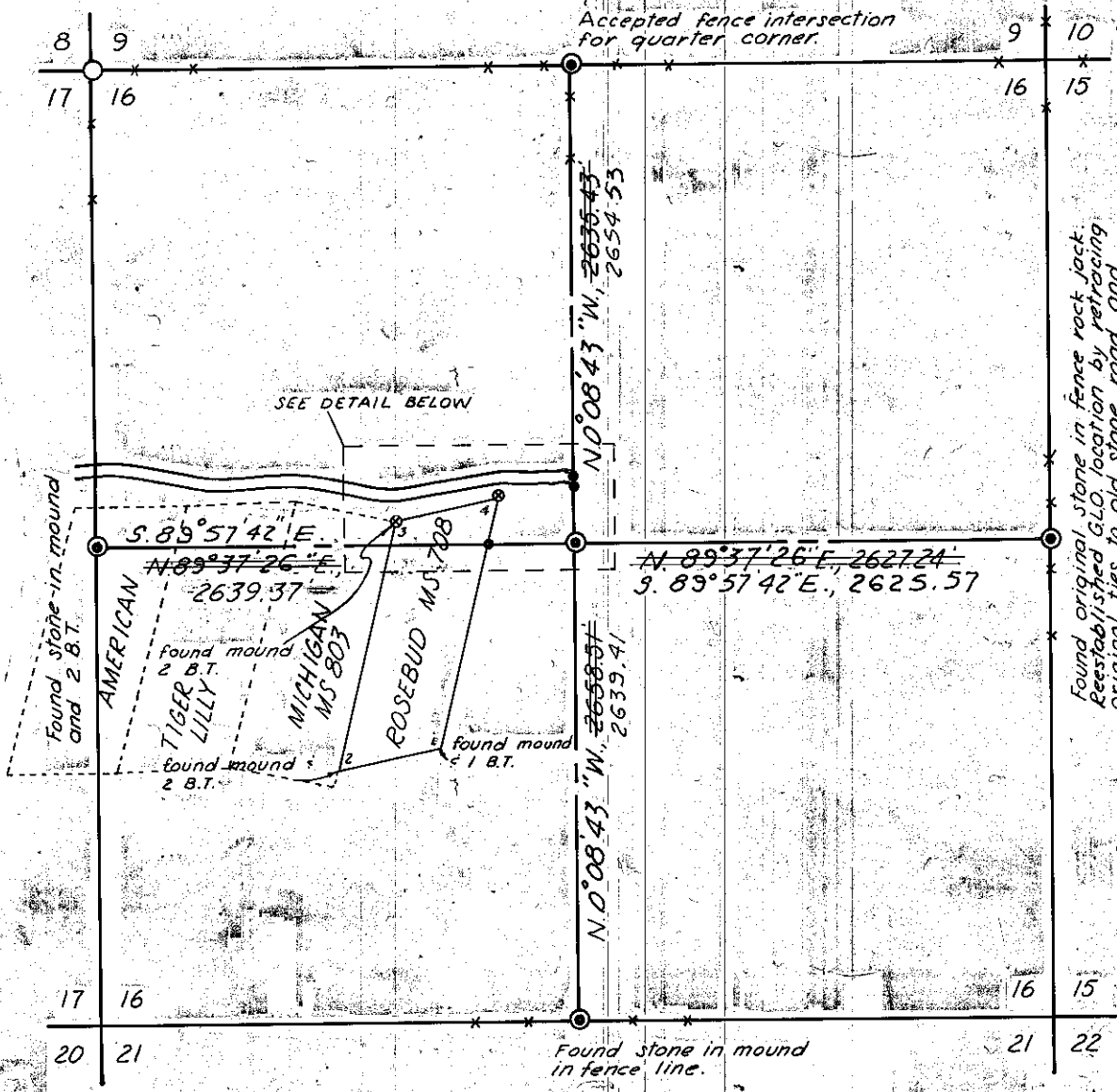
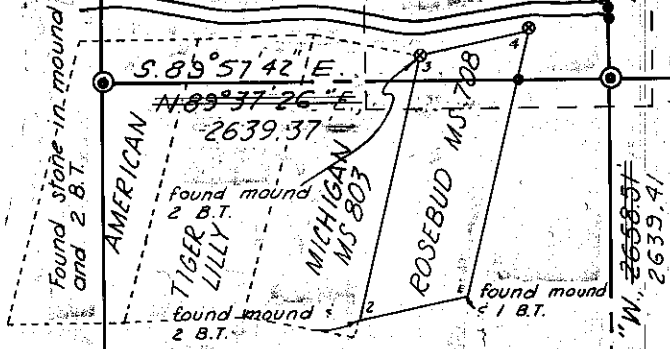


Meridian by Solar Observation



SEE DETAIL BELOW

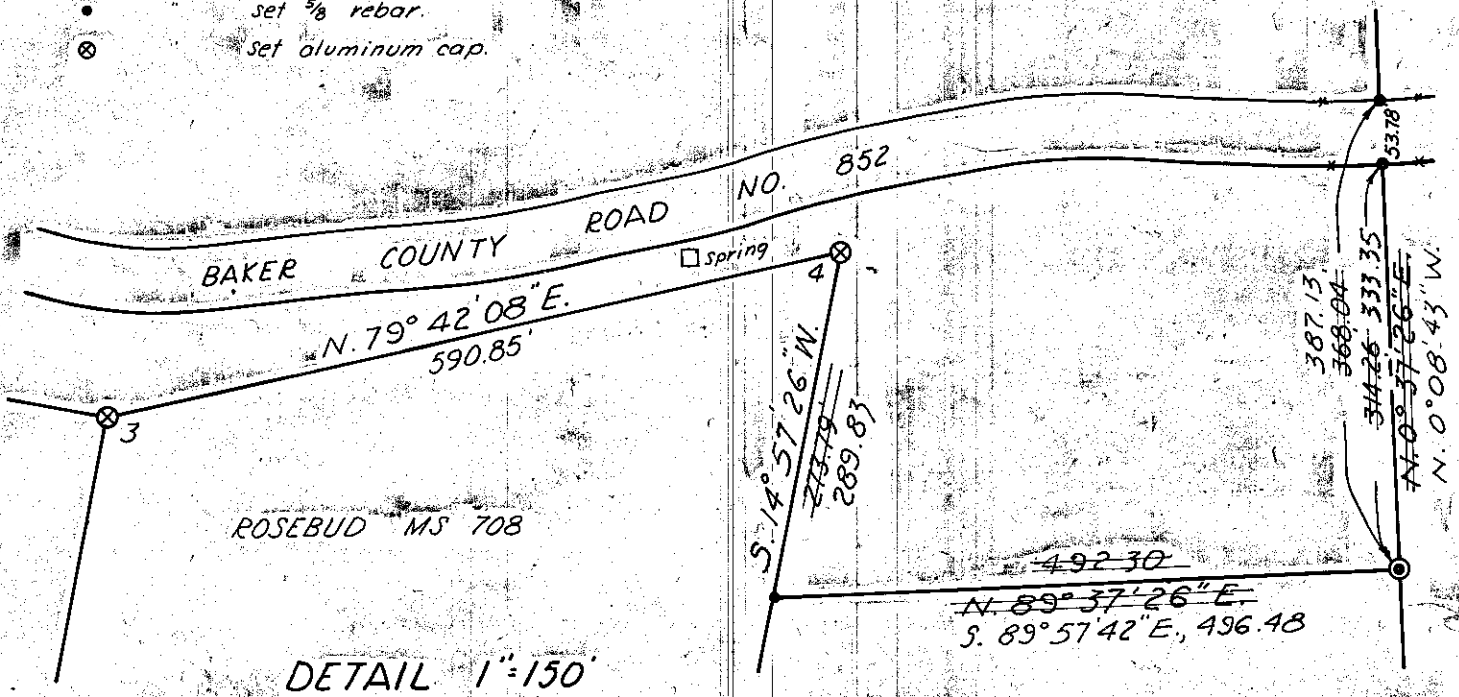


Found original stone in fence rock jack. Reestablished G.O. location by retracing original ties to old stage road and Sprata store building. Buried stone alongside monument.  
This monument moved. See Survey No. 8-44-68. J.D.H.

1" = 1000'

LEGEND

- Indicates found BLM brass cap.
- " set brass cap.
- " set 3/8" rebar.
- ⊗ " set aluminum cap.



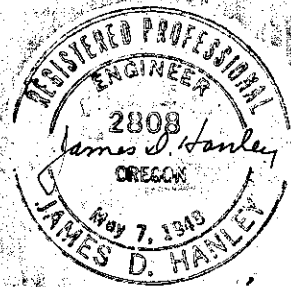
DETAIL 1" = 150'

SURVEY OF PARCEL IN SECTION 16, T.8S., R.44E., W.M.

MAY 18, 26 & JUNE 1, 4, 1976 Scale as shown

FILED 6-28-76  
BAKER COUNTY SURVEYOR  
SURVEY NO. 8-44-2

For Mrs. Flossie Carnahan  
All corrections made by J.D. Hanley on June 18, 1984.



Revised 6-23-76 & 6-18-84