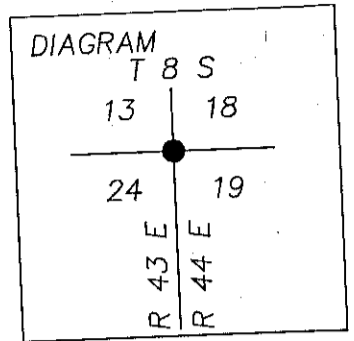


CERTIFIED RECORD OF LAND CORNER MONUMENTATION

History of Original Corner Establishment:

TOWNSHIP LINE PLAT AND NOTES SURVEYED BY WALDEN
IN 1873 UNDER CONTRACT NO. 198.



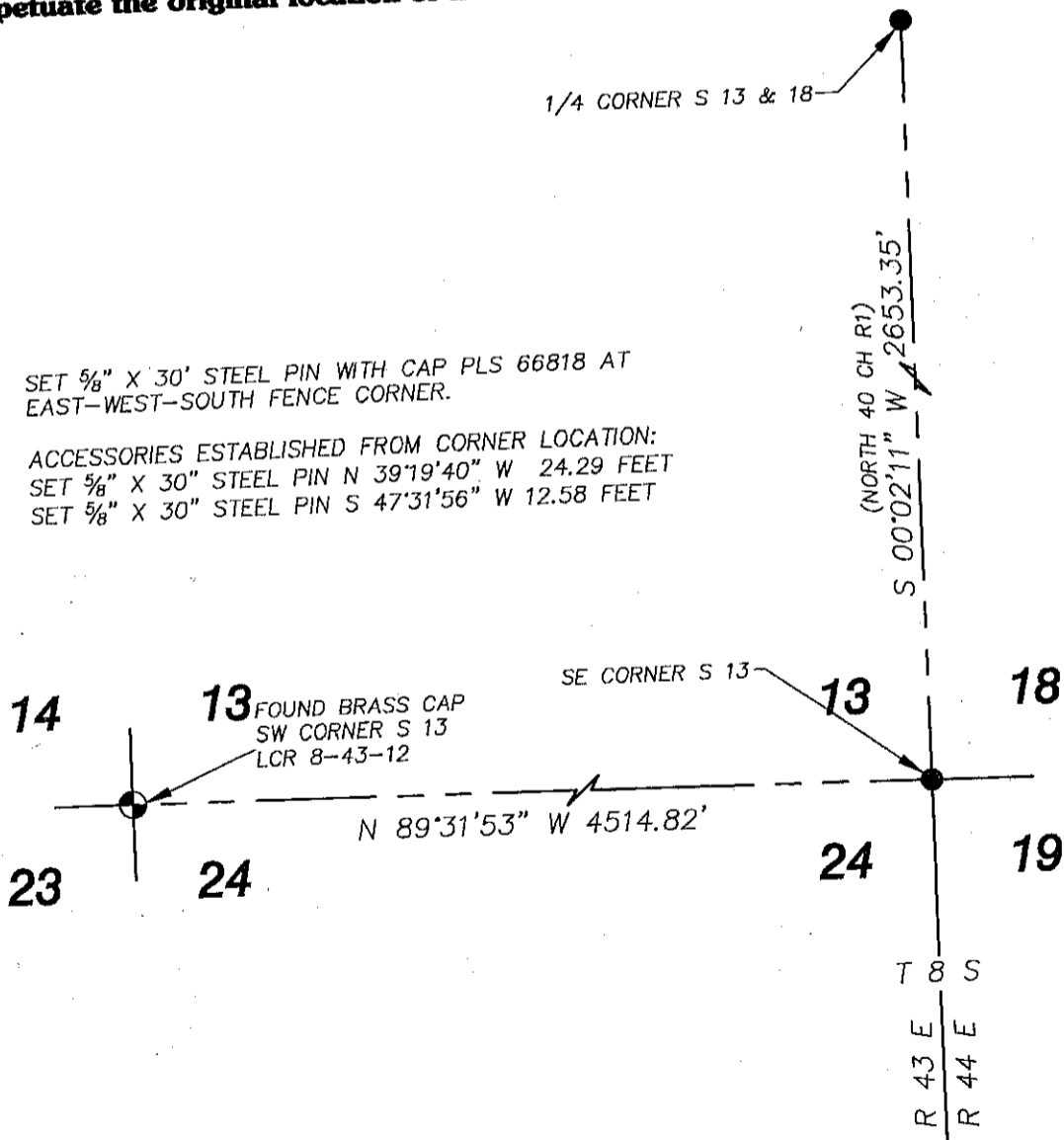
Description of corner evidence found:

NO ORIGINAL EVIDENCE FOUND. FOUND 3X5 METAL TAG IN FENCE POST.

Description of monument and accessories I established to perpetuate the original location of this corner:

SET 5/8" X 30" STEEL PIN WITH CAP PLS 66818 AT EAST-WEST-SOUTH FENCE CORNER.

ACCESSORIES ESTABLISHED FROM CORNER LOCATION:
SET 5/8" X 30" STEEL PIN N 39°19'40" W 24.29 FEET
SET 5/8" X 30" STEEL PIN S 47°31'56" W 12.58 FEET



I, STEVEN C. WELLINGTON CERTIFY THAT THIS CORNER WAS PROPERLY REESTABLISHED BY MIKE ENGBRITSON AND JEFF ENGBRITSON ON SEPTEMBER 5, 2012.

FILED May 8, 2013
BAKER COUNTY SURVEYOR
SURVEY NO. 8-43-48 / 8-44-155
CORNER PRES. NO. _____
CORNER PRES. NO. _____

**REGISTERED
PROFESSIONAL
LAND SURVEYOR**

Steven C. Wellington

OREGON
JAN. 16, 2002
STEVEN C. WELLINGTON
66818

RENEWS JUNE 30, 2014

4/18/13