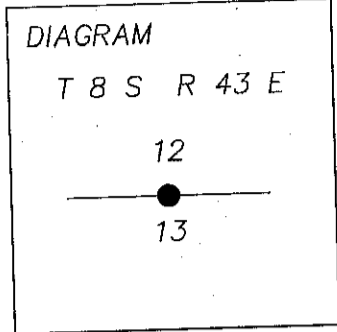


# CERTIFIED RECORD OF LAND CORNER MONUMENTATION

## History of Original Corner Establishment:

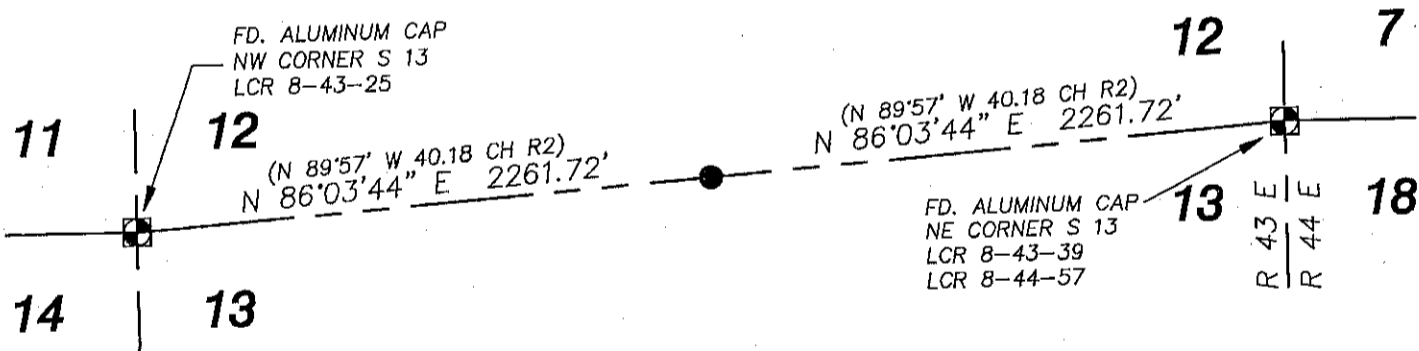
T8S R43E SUBDIVISION PLAT AND NOTES SURVEYED BY BARR  
IN 1880 UNDER CONTRACT NO. 372.



## Description of corner evidence found:

NO ORIGINAL EVIDENCE FOUND.

## Description of monument and accessories I established to perpetuate the original location of this corner:



SET 5/8" X 30" STEEL PIN WITH CAP PLS 66818 PLACED  
STONES, STEEL POST AND CORNER TAG IN STONES.

ACCESSORIES ESTABLISHED FROM CORNER LOCATION:  
SET 5/8" X 30" STEEL PIN N 50°05'56" E 14.34 FEET  
SET NAIL & SHINNER IN FENCE POST, S 72°22'59" W 45.36  
FEET

I, STEVEN C. WELLINGTON CERTIFY THAT THIS CORNER  
WAS PROPERLY REESTABLISHED BY MIKE ENGBRITSON  
AND JEFF ENGBRITSON ON SEPTEMBER 5, 2012.

REGISTERED  
PROFESSIONAL  
LAND SURVEYOR

*Steven C. Wellington*

OREGON  
JAN. 16, 2002  
STEVEN C. WELLINGTON  
66818

RENEWS JUNE 30, 2014

FILED May 8, 2013  
BAKER COUNTY SURVEYOR  
SURVEY NO. B-43-46  
CORNER PRES. NO. \_\_\_\_\_

4/18/13