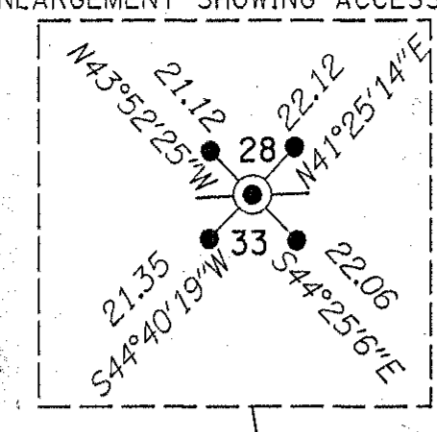
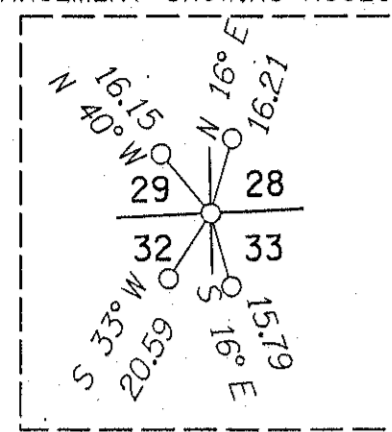
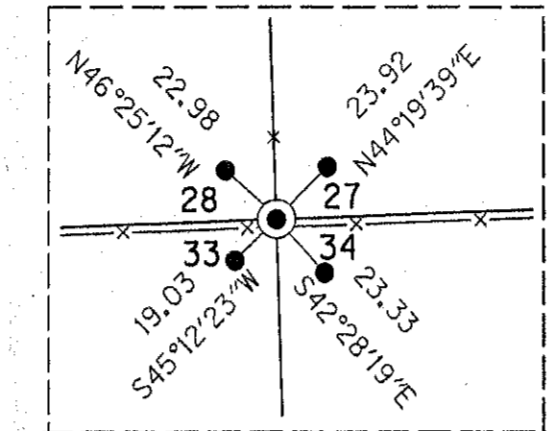


SITUATED IN SECTION 33, T. 8 S., R. 43 E., W.M.
BAKER COUNTY, OREGON

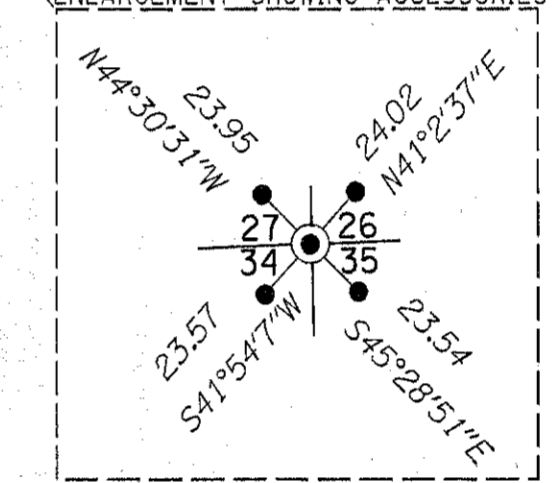
ENLARGEMENT SHOWING ACCESSORIES ENLARGEMENT SHOWING ACCESSORIES



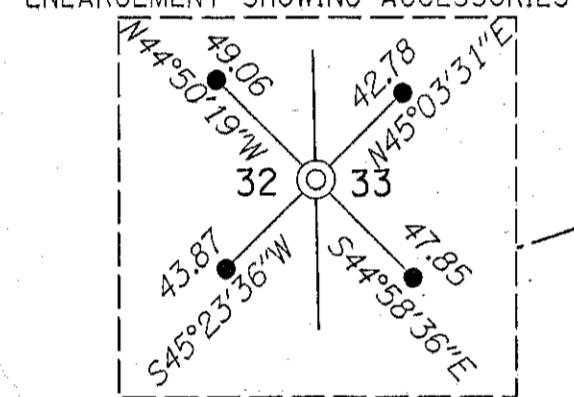
ENLARGEMENT SHOWING ACCESSORIES



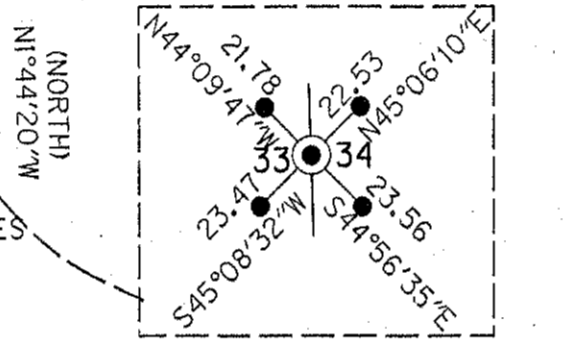
ENLARGEMENT SHOWING ACCESSORIES



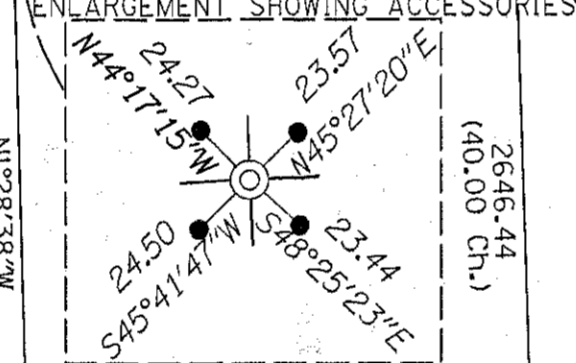
ENLARGEMENT SHOWING ACCESSORIES



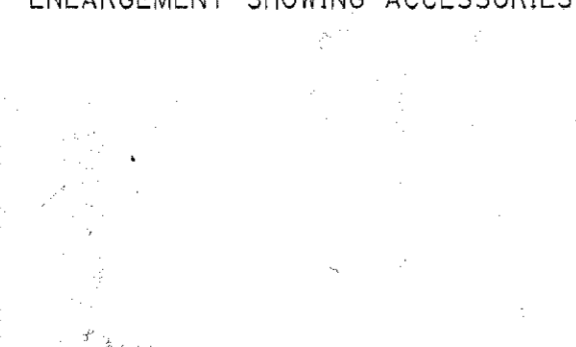
ENLARGEMENT SHOWING ACCESSORIES



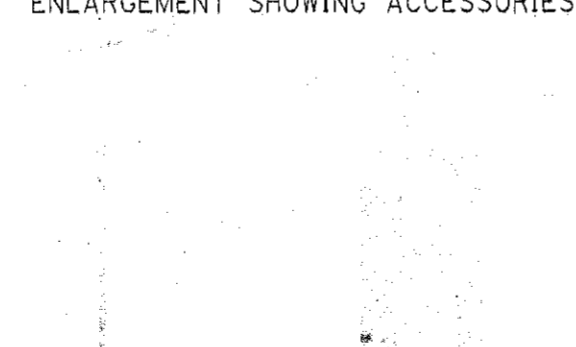
ENLARGEMENT SHOWING ACCESSORIES



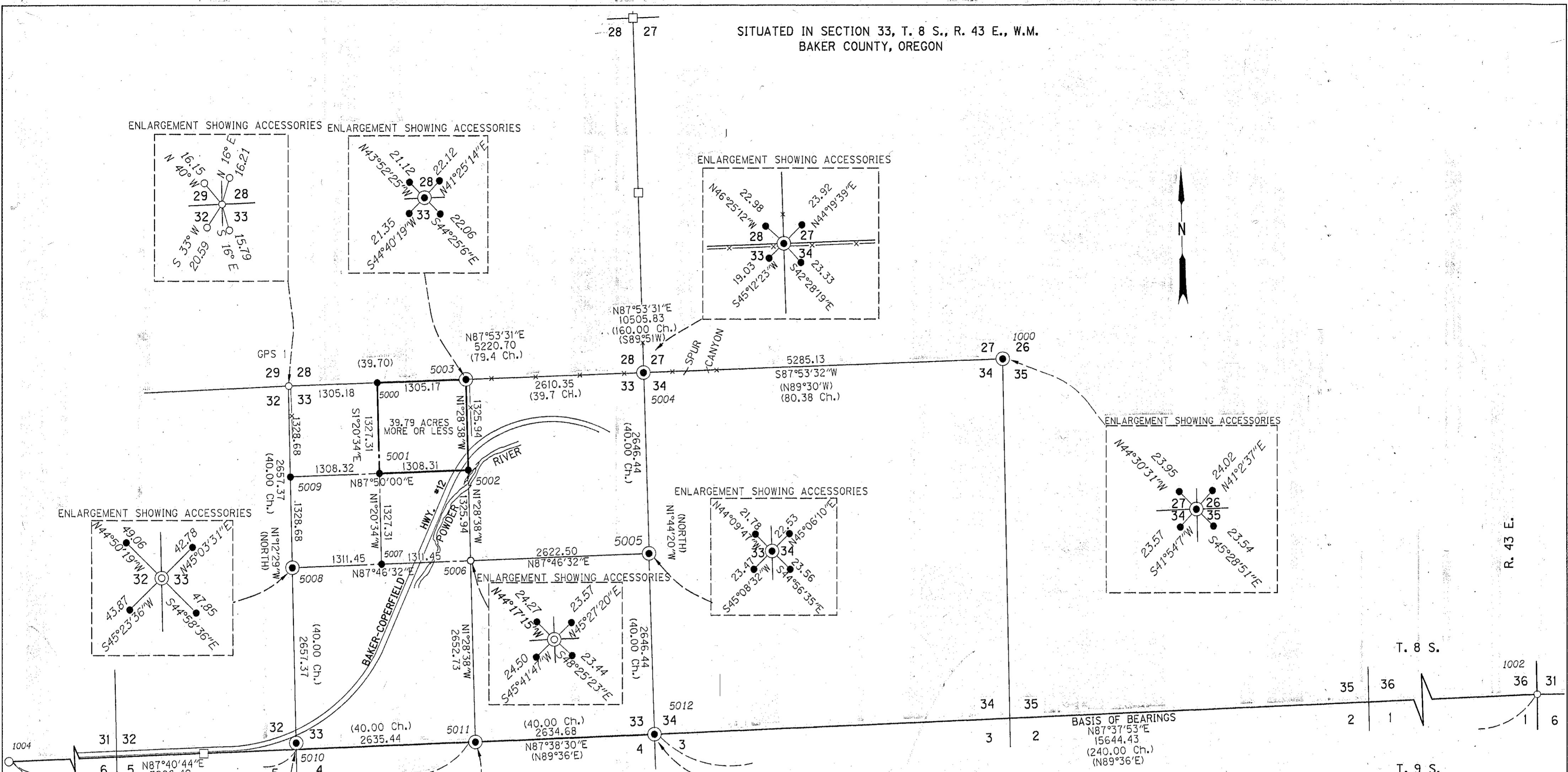
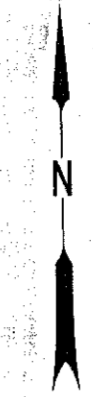
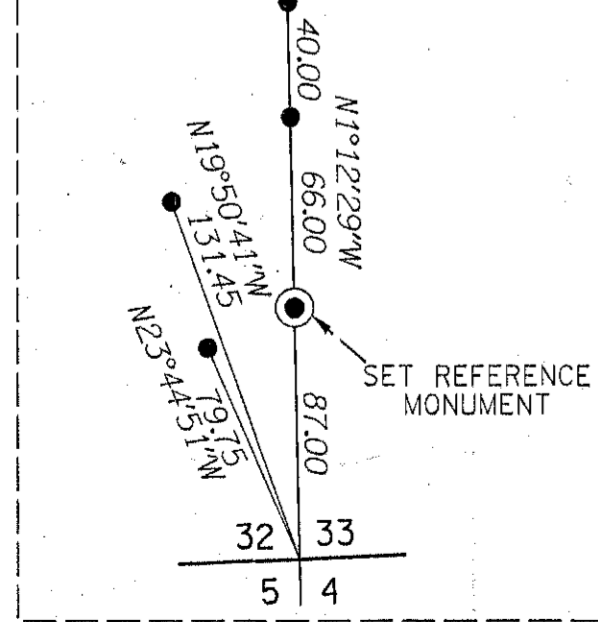
ENLARGEMENT SHOWING ACCESSORIES



ENLARGEMENT SHOWING ACCESSORIES



ENLARGEMENT SHOWING ACCESSORIES



BASIS OF BEARINGS
N87°37'53"E
15644.43
(240.00 Ch.)
(N89°36'E)

LEGEND

- () RECORD DATA PER ORIGINAL GLO NOTES
- FOUND MONUMENT NOTED IN TABLE
- SET 2-1/2" BRASS CAP ON A 1-1/2" GALV. PIPE
- SET 5/8" X 30" IRON ROD W/1-1/2" RED PLASTIC CAP
- PROPERTY LINE
- X- FENCE
- SEARCHED FOR AND NOT FOUND
- - - EDGE OF PAVEMENT
- RIGHT-OF-WAY

REGISTERED PROFESSIONAL LAND SURVEYOR
J. David Brinton
OREGON
DECEMBER 2, 1993
J. DAVID BRINTON
2065
EXPIRES: 12-31-2011

OREGON DEPARTMENT OF TRANSPORTATION
LOVE BRIDGE QUARRY BOUNDARY SURVEY
BAKER-COPPERFIELD HWY. #12
BAKER COUNTY

FILED Dec. 9, 2010
BAKER COUNTY SURVEYOR
SURVEY NO. 8-43-44
9-43-5

OREGON DEPT. OF TRANSPORTATION SEPTEMBER 15, 2010
200 HAWTHORNE AVE N.E. SCALE 1" = 1000'
SALEM, OREGON 97301 SHEET 1 OF 2