

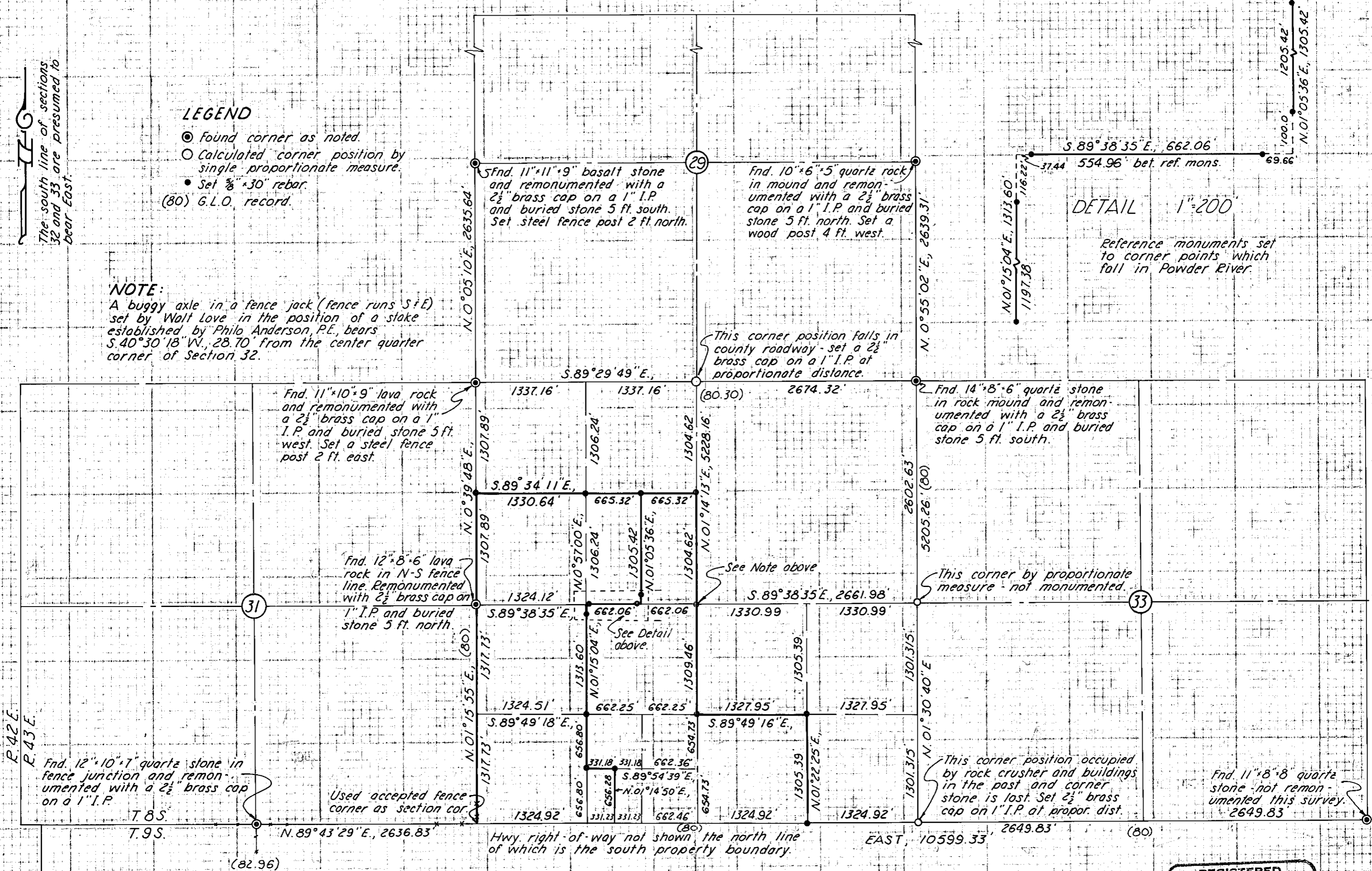
The south line of sections 32 and 33 are presumed to bear East.

LEGEND

- Found corner as noted.
- Calculated corner position by single proportionate measure.
- Set $\frac{3}{8}$ " x 30" rebar.
- (80) G.L.O. record.

NOTE:

A buggy axle in a fence jack (fence runs S+E) set by Walt Love in the position of a stake established by Philo Anderson, P.E., bears S.40°30'18" W., 28.70' from the center quarter corner of Section 32.



FILED May 3, 1978
 BAKER COUNTY SURVEYOR
 SURVEY NO. 3-43-1

MAP OF SURVEY
 THE SW 1/4 SE 1/4 AND PORTIONS OF THE W 1/2
 SECTION 32, T.8S., R.43E., W.M.
 Surveyed April 4-26 and May 1, 1978 1"=1000'
 For Todd McGiffin

REGISTERED
 PROFESSIONAL
 LAND SURVEYOR
 James D. Hanley
 OREGON
 SEPTEMBER 23, 1977
 JAMES D. HANLEY
 1206